



INFORMAZIONI TECNICHE

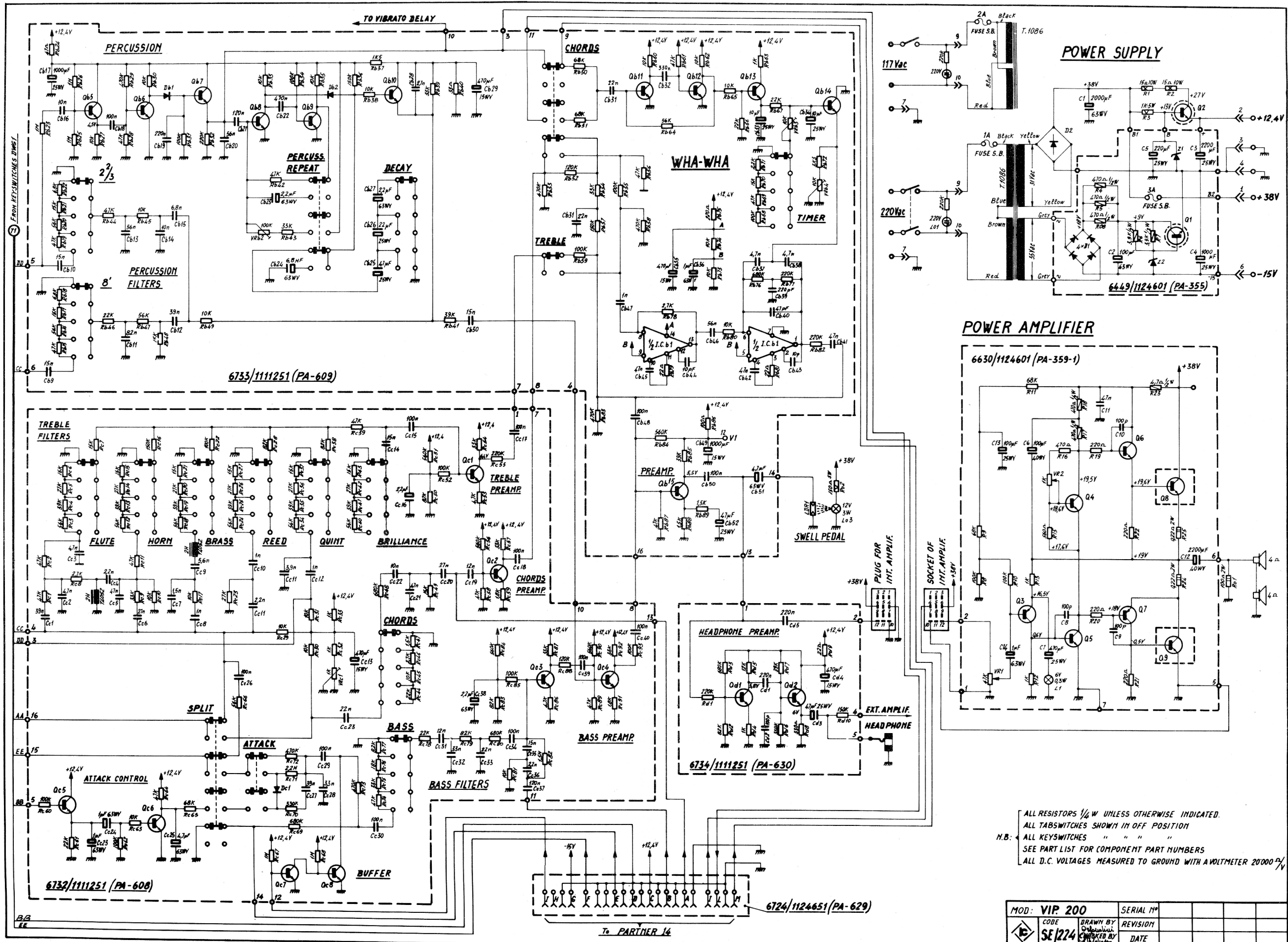
**Organo Elettronico
Mod. VIP 200 R**

IMPORTANT : IN ANY CORRESPONDENCE CONCERNING THIS INSTRUMENT ALWAYS INCLUDE MODEL AND SERIAL NUMBERS!

PARTS ORDERING – When ordering parts be sure to include the following information:

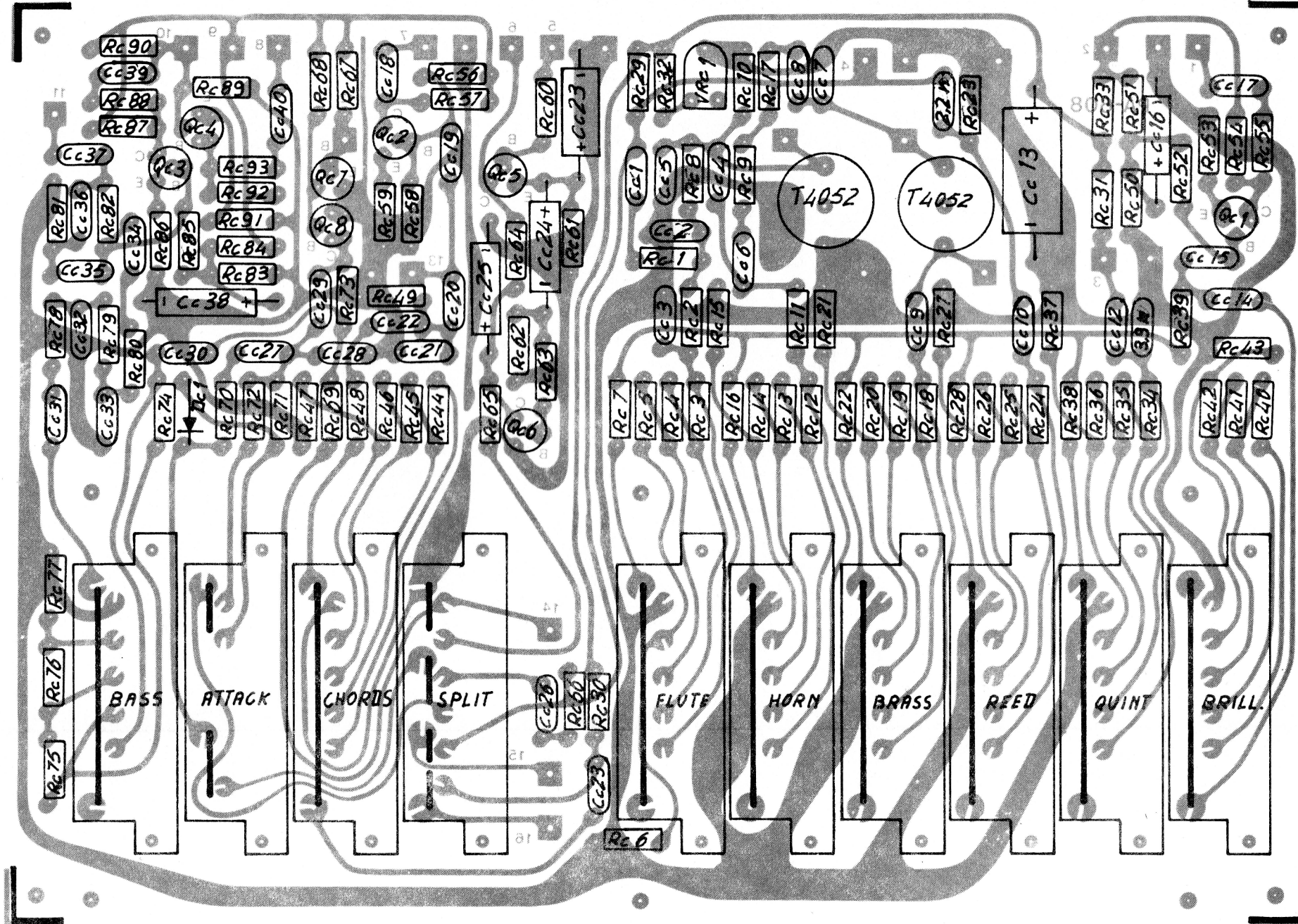
1. Model and serial Number of instrument.
2. Part Code.
3. A description of the Part.
4. Specify how you want the part shipped.

FARFISA COMPANY - WHOSE POLICY IS CONSTANTLY DIRECTED TO IMPROVEMENTS AND NEW DEVELOPMENTS - RESERVES THE RIGHT TO CHANGE SPECIFICATIONS, DESIGNS, PRICES, MODELS AND TO DISCONTINUE MODELS WITHOUT NOTICE AND LIABILITY.



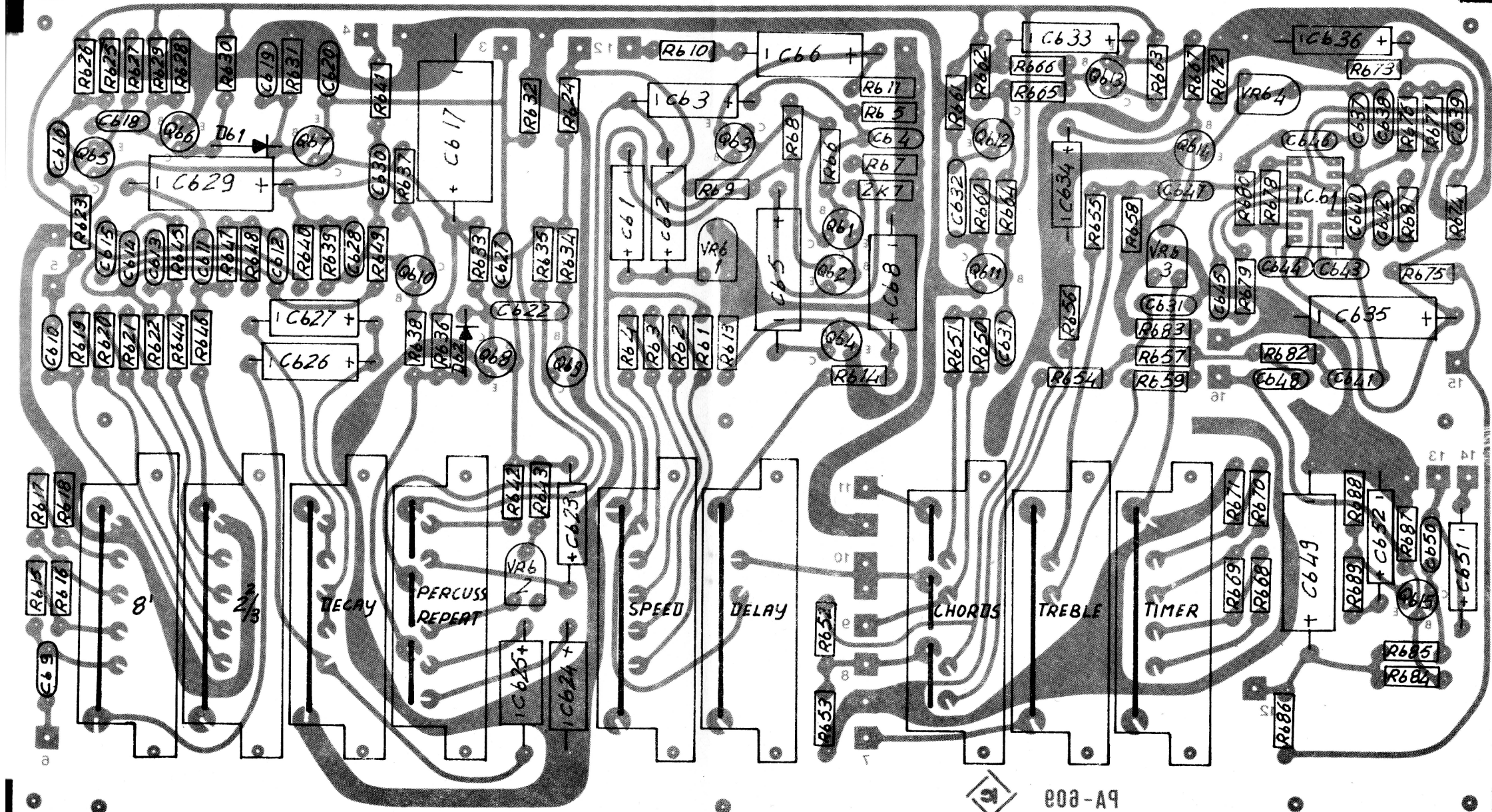
ALL RESISTORS 1/4 W UNLESS OTHERWISE INDICATED.
 ALL TABSWITCHES SHOWN IN OFF POSITION
 M.B. ALL KEYSWITCHES " " " " " "
 SEE PART LIST FOR COMPONENT PART NUMBERS
 ALL D.C. VOLTAGES MEASURED TO GROUND WITH A VOLTMETER 20000 Ω/V

MOD: VIP 200	SERIAL N°		
CODE SE/224	DRAWN BY	REVISION	
	DATE		

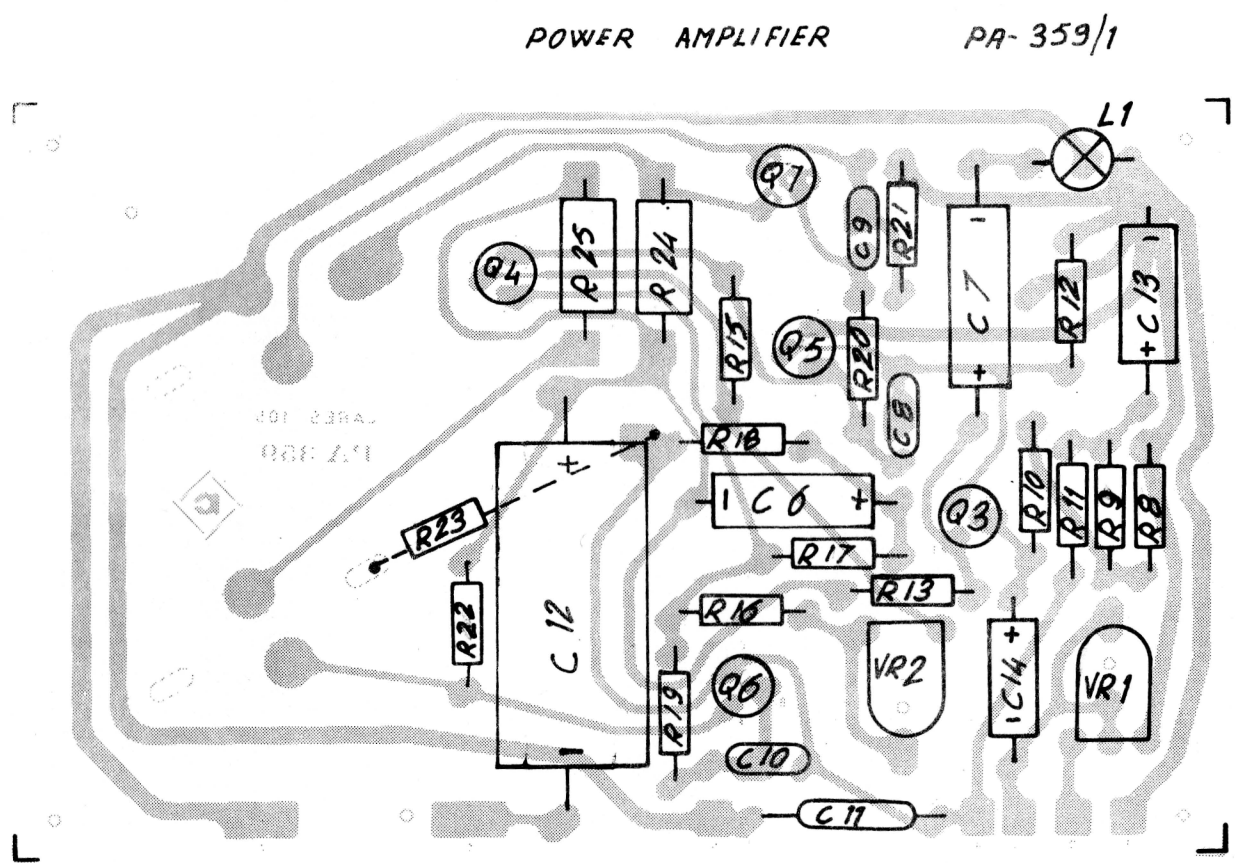
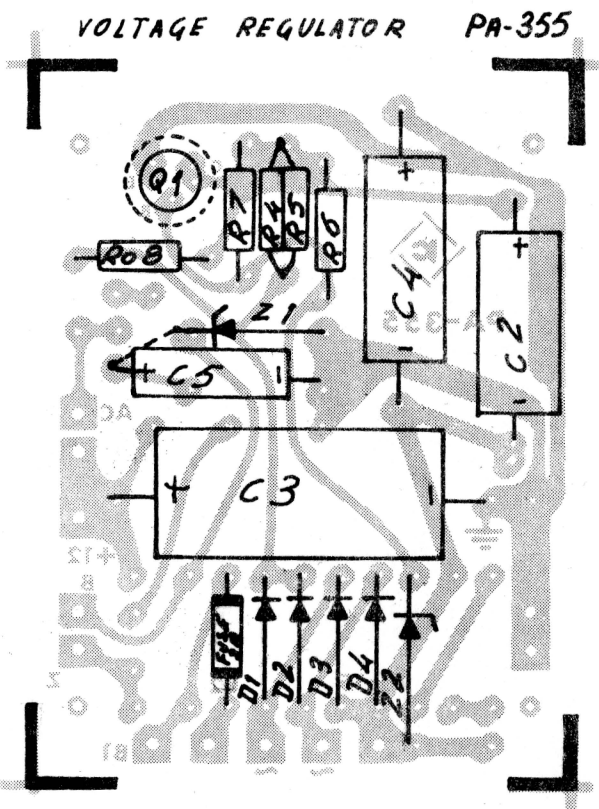
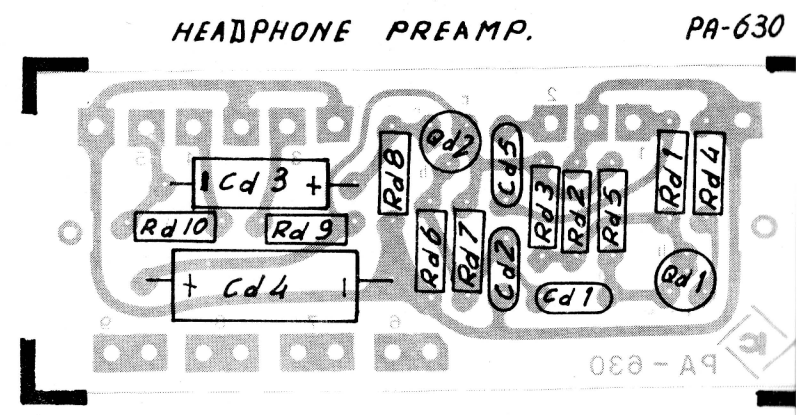
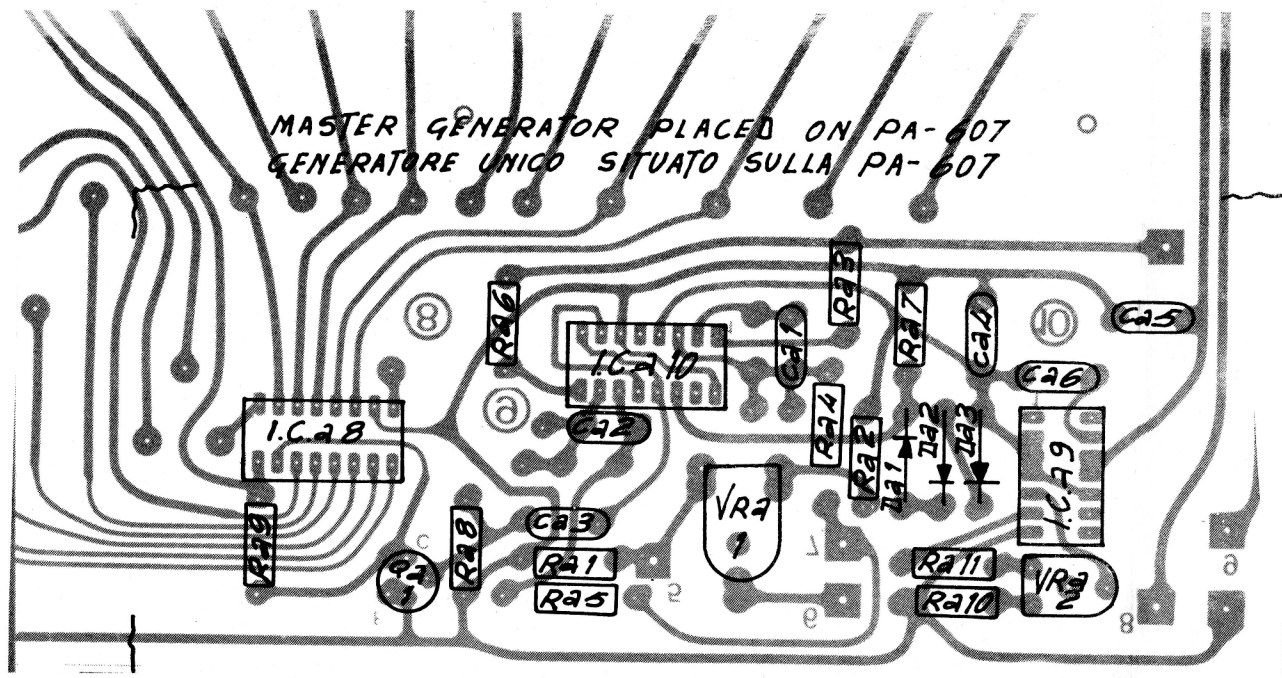


VIBRATO WHA-WHA

PA-609



PA-609



VIP 200

TRANSISTORS (Q) & DIODES (D) LIST

①

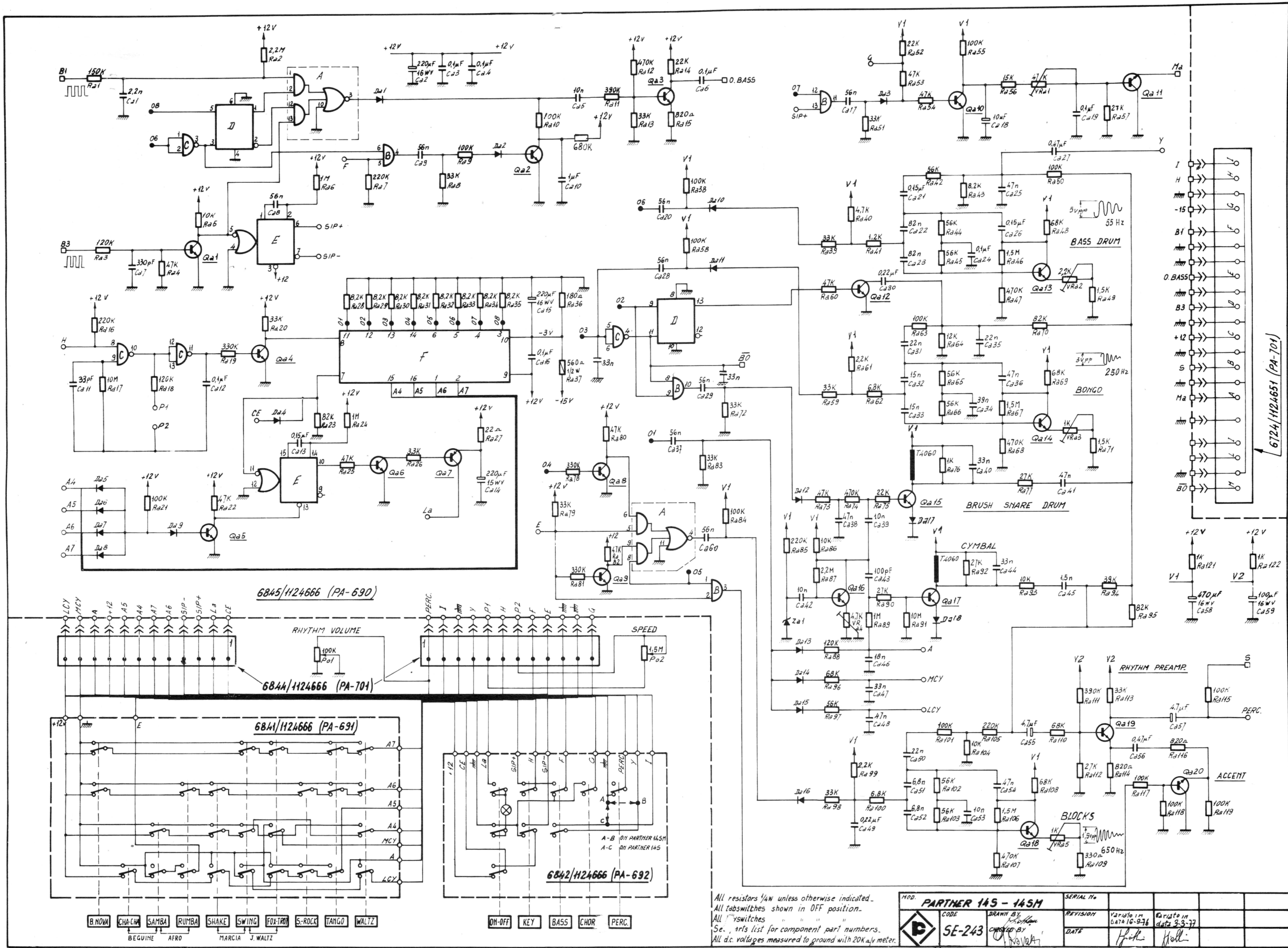
Schem. Ref.	Circuit	Type	Part Code
<u>CHASSIS</u>	<u>POWER SUPPLY CHASSIS (DWG 2/SE 224)</u>		
Q 2	Series Stabilizer.....	Westinghouse 156-043.. Solitron H 9340.....	W/1800
D 2	Rectifier Bridge.....	ITT B40-C 2200..... SIEMENS B 40-C 2200... AEG B 40-C 2200.....	B/1201
<u>PA 355</u>	<u>VOLTAGE REGULATOR BOARD (DWG 2/SE 224)</u>		<u>6449/1124601</u>
Q 1	Series Stabilizer.....	BC 286.....	W/1601
D 1	Rectifier Diodes (Bridge)..	TEXAS 1N 914.....	B/1002
Z 1	Voltage Reference-Diode Zener (13V - 1W)	ITT ZY 13..... MOTOROLA 1N 4743-A....	B/1418
Z 2	Voltage Reference-Diode Zener (15V - 400mW)	ITT ZPD 15..... MOTOROLA 1N 5245 B....	B/1319
<u>PA 359-1</u>	<u>POWER AMPLIFIER BOARD (DWG 2/SE 224)</u>		<u>6630/1124601</u>
Q 3	Input Preamplifier PNP.....	SGS IW 9640 - BC 154..	W/1500
Q 4	Temperature Compensator....	BC 207 A-B..... BC 209 B-C.....	W/1401 W/1407-1410
Q 5	Driver Amplifier NPN.....	SGS BC 286.....	W/1601
Q 6	Driver NPN.....	SGS BC 286.....	W/1601
Q 7	Driver PNP.....	SGS BC 287.....	W/1702
Q8 - Q9	Power Transistors.....	Westinghouse 156-043.. Solitron H 9340.....	W/1800
<u>PA 608</u>	<u>MANUAL BASS & FILTERS (DWG 2/SE 224)</u>		<u>6732/1111251</u>
Q c 1	Treble preamplifier.....	} BC 209 B red dot..... BC 109 B red dot.....	W/1413 W/1415
Q c 2	Chords preamplifier.....		
Q c 3	Bass preamplifier.....		
Q c 4	Preamplifier.....		
Qc5-Qc6	Attack Control.....	} BC 208-B-C..... BC 209 B.....	W/1404 W/1407
Qc7-Qc8	Buffers.....		
D c 1	Diode.....	D 525 B-BA 130.....	B/1000-B/1003

VIP 200

TRANSISTORS (Q) & DIODES (D) LIST

2

Schem.Ref.	Circuit	Type	Part Code
<u>PA 607</u>	<u>KEYSWITCH & TONE GENERATOR (DWG 1/SE 224)</u>		<u>6731/1111251</u>
ICa1+ICa7	Frequency Divider.....	G.I.E. AY-1-5050.....	W/1100-W/1101
IC a 8	Master Tone Generator.....	G.I.E. AY-1-0212.....	W/1105
IC a 9	Voltage Regulator.....	SN 72723 N.....	W/1209
IC a 10	Oscillator.....	SN 29730 N.....	W/1009
Qa1-Qa2	Buffers.....	BC 208-B-C.....	W/1404
Da1+Da3	Diodes.....	D 525 B-BA 130.....	B/1000-B/1003
<u>PA 609</u>	<u>VIBRATO-WHA-WHA (DWG 1-2/SE 224)</u>		<u>6733/1111251</u>
IC b 1	Wha-Wha Filter.....	SN 76131 white dot...	W/1212
Qb1-Qb2	Vibrato Oscillator.....	} BC 208 BC..... BC 209 B.....	W/1404 W/1407
Q b 3	Driver.....		
Q b 5	Buffer.....		
Q b 6	Amplifier.....		
Q b 7	Driver.....		
Qb8-Qb9	Multivibrator.....		
Q b 4	Delay.....	} BC 209-C MISTRAL.....	W/1426
Q b 10	Keyer.....	} BC 209-C MISTRAL.....	W/1426
Qb11-Qb12	Monostable Multivibrator..	} BC 208 B-C..... BC 209 B.....	W/1404 W/1407
Q b 13	Buffer.....		
Q b 14	Switch.....	BC 209-B.....	W/1407
Q b 15	Preamplifier.....	BC 209-B red dot.....	W/1413
D b 1	Diode.....	D 525 B-BA 130.....	B/1000-B/1003
D b 2	Diode.....	IR 10 D1-10 D4..... IR 10 D2.....	B/1100-B/1101
<u>PA 630</u>	<u>HEADPHONE PREAMPLIFIER (DWG 2/SE 224)</u>		<u>6734/1111251</u>
Qd1-Qd2	Preamplifier.....	BC 209 B red dot..... BC 109 B red dot.....	W/1413 W/1415

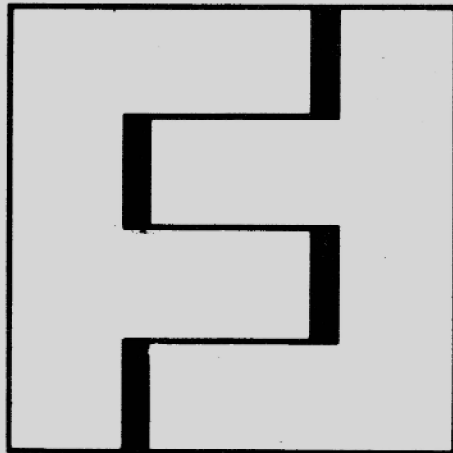


All resistors 1/4W unless otherwise indicated.
 All switches shown in OFF position.
 All "Y" switches
 See parts list for component part numbers.
 All d.c. voltages measured to ground with 20K Ω meter.

PARTNER 14S - 145M		SERIAL No.	REVISION	DATE
CODE	SE-243	REVISION	DATE	
DRAWN BY	CK	REVISION	DATE	
CHECKED BY	CK	REVISION	DATE	

PARTNER 14S-14SM TRANSISTORS (Q) & DIODES (D) LIST

Schem.Ref.	Circuit	Type	Part Code		
<u>PA 690</u>	<u>RHYTHM GENERATOR & CLOCK (DWG 1/SE 243)</u>		<u>6845/1124666</u>		
A	Dual 2- Wide 2- Input and/ or Invert Gate.....	4085 FAIRCHILD.....	W/1158		
B	Quadr. 2- Input and Gate..	4081 FAIRCHILD.....	W/1156		
C	Quadr. 2- Input Nand Gate.	4011 FAIRCHILD.....	W/1150		
D	Dual D - Flip-Flop.....	4013 FAIRCHILD.....	W/1157		
E	Dual Retriggerable Reset. Monostable Multivibrator..	4528 FAIRCHILD.....	W/1159		
F	Rhythm Generator.....	M 256 BIAG.-S.G.S.....	W/1110		
Qa1	Interface.....	} BC 208-B BC 209-B	W/1404 W/1407		
Qa2-Qa3	Bass Modulator.....				
Qa4	Buffer Oscillator.....				
Qa5	Switch Reset.....				
Qa6	Lamp Driver.....				
Qa8-Qa9	Buffer.....				
Qa10	Chord Modulator.....				
Qa11	Chord Modulator.....			BC 209-C-MISTRAL.....	W/1426
Qa7	Lamp Driver.....			BC 154.....	W/1500
Qa12	Switch.....			} BC 209-B BC 149-B	W/1407 W/1408
Qa13	Bass Drum.....				
Qa14	Bongo Oscillator.....				
Qa15	Brush Snare Drum Filter...				
Qa16	Noise Preamplifier.....				
Qa17	Cymbal Filter.....				
Qa18	Blocks Oscillator.....				
Qa19	Rhythm Preamplifier.....	BC 209-B red dot.....	W/1413		
Qa20	Accent Switch.....	BC 209-C MISTRAL.....	W/1426		
Za1	Noise Generator-Zener Diode	B/1604 - FARFISA.....	B/1604		
Da1+Da18	Diodes.....	D 525 B- BA 130.....	B/1000-B/1003		



FARFISA S.p.A.
IS A SUBSIDIARY
OF LEAR SIEGLER, Inc. 