

VIP 500

TRANSISTORS (Q) & DIODES (D) LIST

Schem. Ref.	Circuit	Type	Part Code
CHASSIS	POWER SUPPLY CHASSIS (DWG 1/SE 238)		8000/1124501
Q 2	Series Stabilizer	WESTINGHOUSE 156-043	W/1800
		SOLITRON H 9340	W/1800
		ITT B 40-C 2200	
D 2	Rectifier Bridge	SIEMENS B 40-C 2200	B/1201
		AEG B 40-C 2200	
PA 355-1	VOLTAGE REGULATOR BOARD (DWG 1/SE 238)		6698/1124501
Q 1	Series Stabilizer	SGS BC 286	W/1601
D 1	Rectifier Diode (Bridge)	MISTRAL SFD 182	B/1002
		TEXAS 1N 914	
Z 1	Voltage Reference-Diode Zener (13V - 1W)	IR 1Z 13	B/1418
		MOTOROLA 1N 4743	
Z 2	Voltage Reference-Diode Zener (15V - 400 mV)	ITT ZPD 15	B/1319
		MOTOROLA 1N 5245-B	
PA 357-2	TONE GENERATOR (DWG 1/SE 238)		6020/609
Q a 1	Master Oscillator	BC 217 B or C	W/1401
Q a 2	Master Oscillator	BC 109 B or C	W/1409 - W/1412
Q a 3	Buffer Amplifier	BC 209 B	W/1407 - W/1410
Da 1 - Da 2	Base Breakdown Protection	SGS IX 9809	B/1000
		TEXAS D 525 A or B	B/1001
		IR 10 D 1 - 10 D 2	B/1100
D a 3	Threshold	IR 10 D 4	B/1101
		PAE R/6	B/1102
PA 473/1	PREAMPLIFIER-VIBRATO (DWG 1-3/SE 238)		6810/1115275
Q d 1	Vibrato Oscillator	BC 209-B	W/1407
Q d 2	Vibrato Oscillator	BC 149-B	W/1408
Q d 3	Vibrato Driver	BC 109-B	W/1409
Q d 4 - Q d 5	Amplifiers	BC 209 red dot	W/1413
		BC 239 red dot	

VIP 500

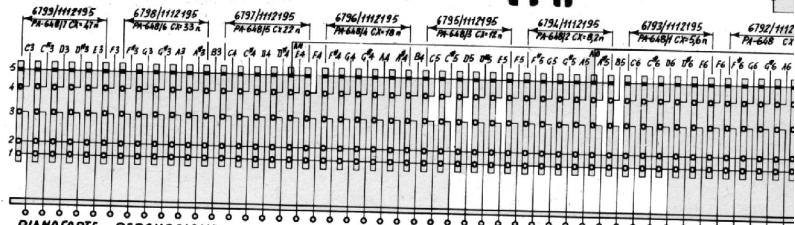
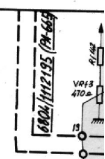
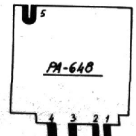
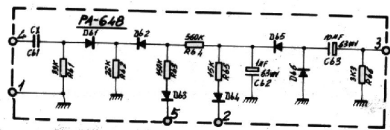
TRANSISTORS (Q) & DIODES (D) LIST

Schem. Ref.	Circuit	Type	Part Code
PA 386/3	FILTERS - BASS - ATTACK - SLALOM (DWG 1-3/SE 238)		6807/1115275
Q c 1	Buffer	BC 208-B-C	W/1404
Q c 2	Control	BC 154	W/1500
Q c 3	Driver	BC 209	W/1407
Q c 4	Driver	BC 286	W/1601 - W/1602
Q c 5	Buffer	BC 208-B-C	W/1404
Qc6 - Qc7	Attack Controls		
Q c 8	Preamplifier	BC 209	W/1407
Dc1 - Dc2	Diodes	D 525 A or B	B/1000 - B/1001
PA 476/2	U.M. KEYSWITCH BOARD (DWG 2/SE 238)		6806/1115275
I.C. 1 ÷ 11	Integrated Frequency Divider	AY-1-5050	W/1100 - W/1101
PA 648	ENVELOPE SHAPER GATE (DWG 2/SE 238)		6792/1112195
PA 648/1			6793/1112195
PA 648/2			6794/1112195
PA 648/3			6795/1112195
PA 648/4			6796/1112195
PA 648/5			6797/1112195
PA 648/6			6798/1112195
PA 648/7	6799/1112195		
D b 1 ÷ D b 6	Diodes	BA 130	B/1000 - B/1003
PA 489/1	PERCUSSION FILTERS - FLUTE (DWG 2-3/SE 238)		6809/1115275
Q g 1 ÷ Q g 4	Preamplifiers	BC 109 B	W/1409
		BC 209 B	W/1407
Q g 5 - Q g 6	Percussion Preamplifiers	BC 239 B red dot	W/1413
		BC 209 B red dot	W/1415
Q g 7	Buffer	BC 209-B	W/1407
Q g 8	Amplifier		
Q g 9	Phrasing Driver		
Q g 11 - Q g 12	Percussion Multivibrators	BC 109-B	W/1409
Q g 13	Keyer	MISTRAL BC 209-C	W/1426
Q g 10	Pulse Driver		
D g 1	Diode	TEXAS D 525 A or B	B/1000 - B/1001
		SGS IX 9809	
D g 2	Diode	1N 4002	B/1100 - B/1101

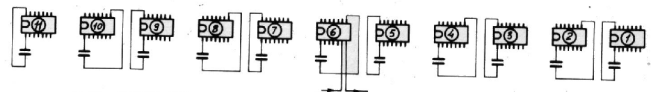
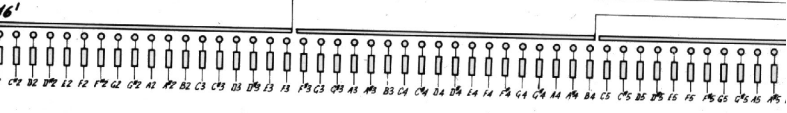
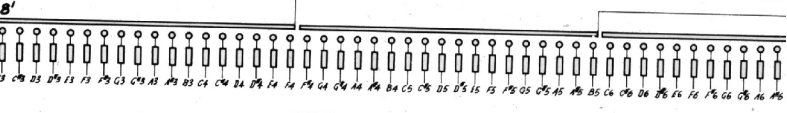
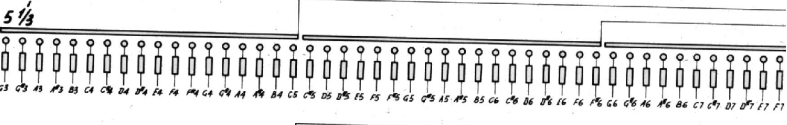
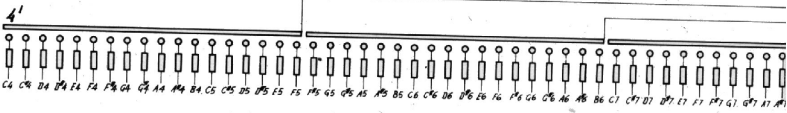
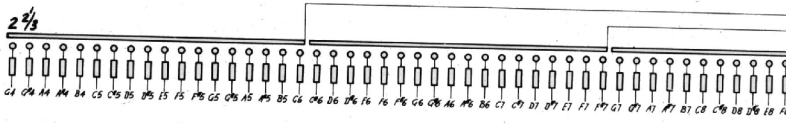
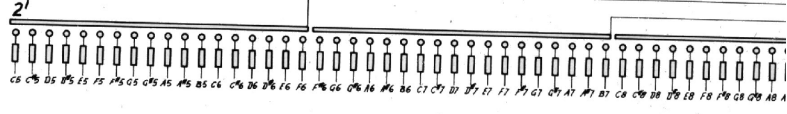
VIP 500

TRANSISTORS (Q) & DIODES (D) LIST

Schem. Ref.	Circuit	Type	Part Code		
PA 665	FLUTE FILTERS & SPECIAL EFFECTS FILTERS (DWG 2-3/SE 238)		6804/1115275		
Q f 1	Preamplifier	}			
Q f 2	Preamplifier				
Q f 4	Härsichord Filter				
Q f 5	Buffer			BC 109-B	W/1409
Q f 6	Modulator			BC 209-B	W/1407
Q f 7	Electric Piano Filter				
Q f 8	Piano Filter				
Q f 3	Flute Preamplifier			BC 109-B, red dot	W/1415
Q f 9	Special Effects Preamplifier	BC 209-B, red dot	W/1413		
D f 1 ÷ D f 4	Diodes	TEXAS D 525 A or B	B/1000 - B/1001		
		SGS IX 9808			
PA 472/1	L. M. FILTERS (DWG 3/SE 238)		6808/1115275		
Q h 1	Flute Preamplifier	BC 239 red dot	W/1413		
Q h 2	L. M. Preamplifier	BC 209 red dot			
D h 1	Diode	SGS IX 9809	B/1000 - B/1001		
		TEXAS D 525 A-B			

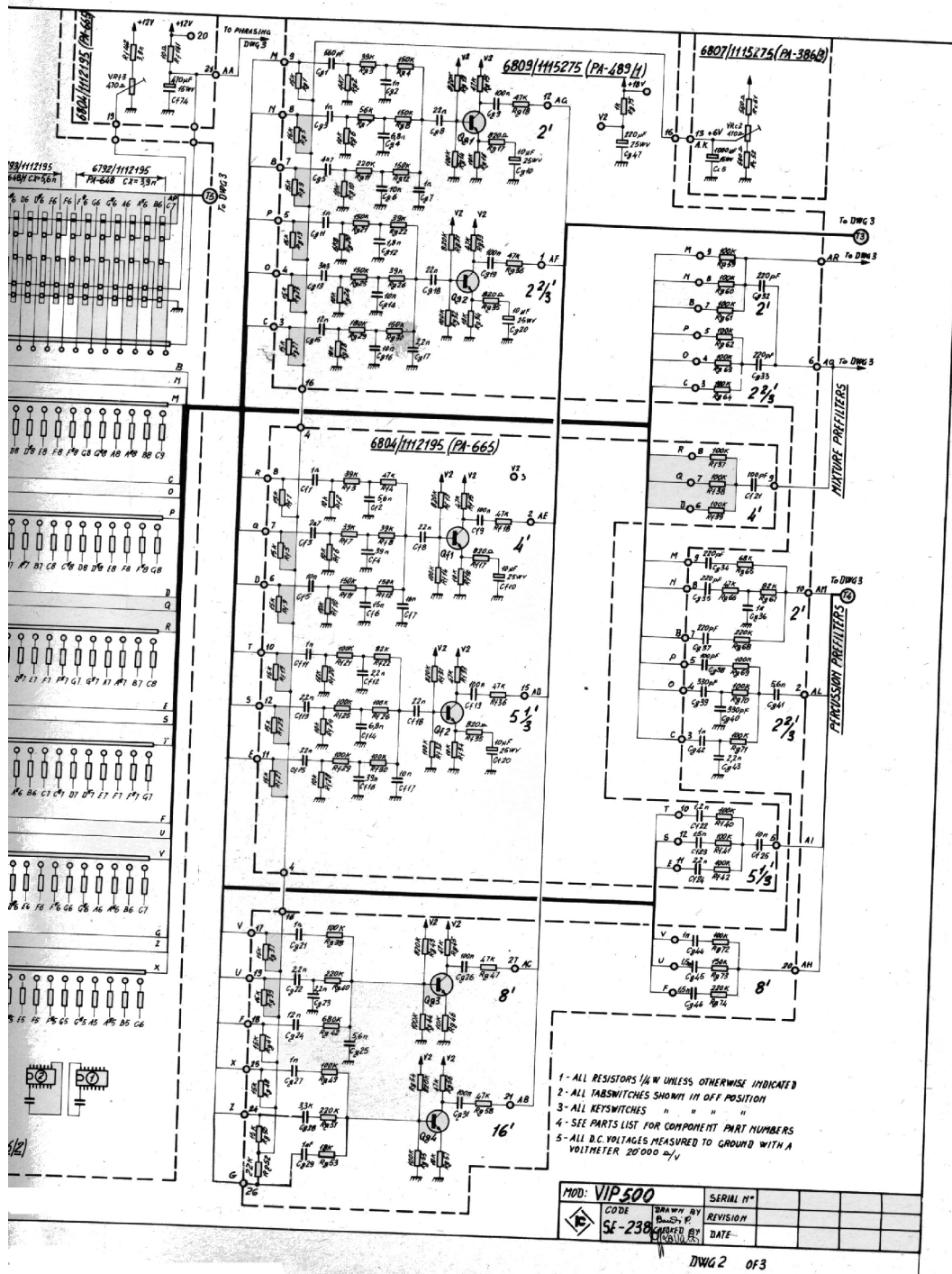


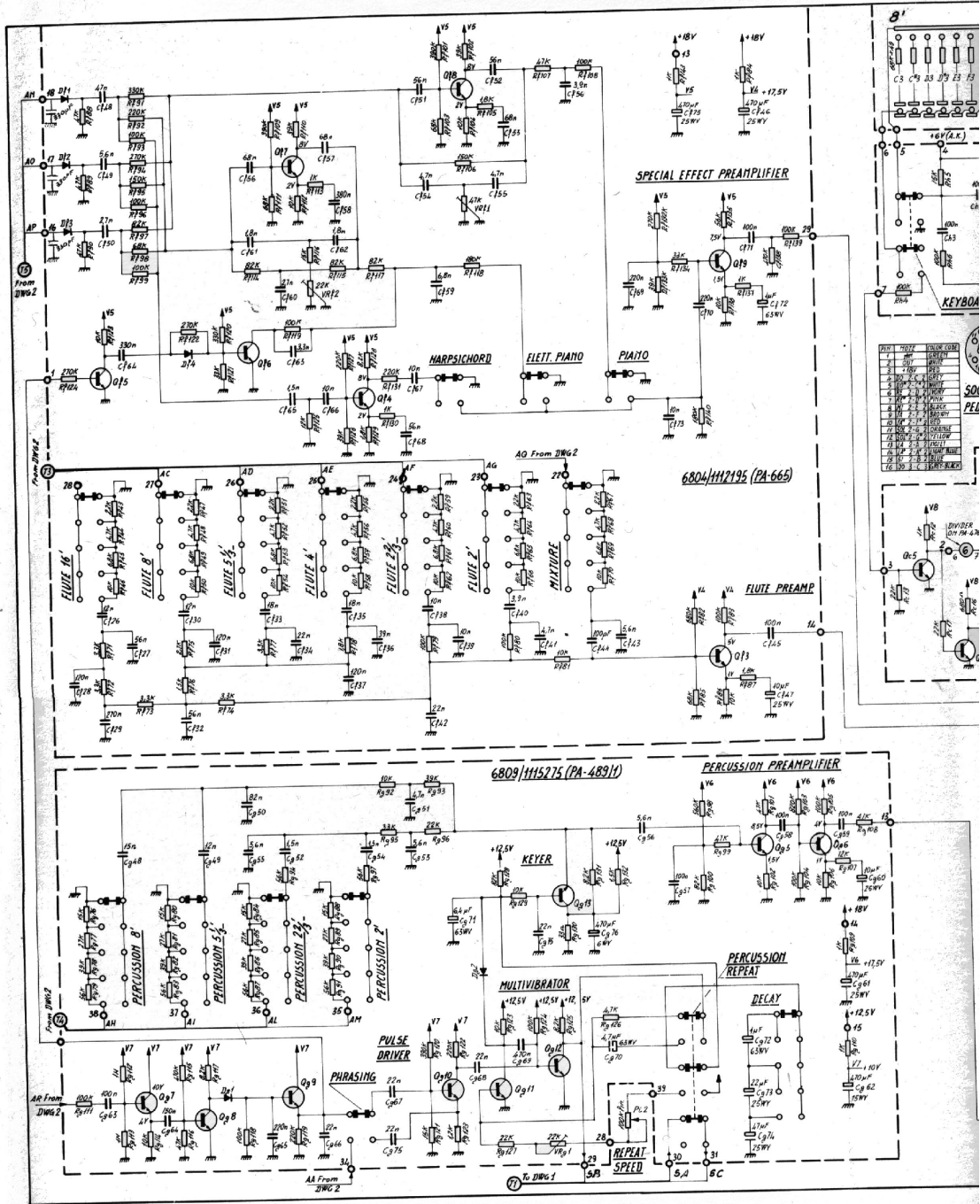
PIANOFORTE - PERCUSSIONE



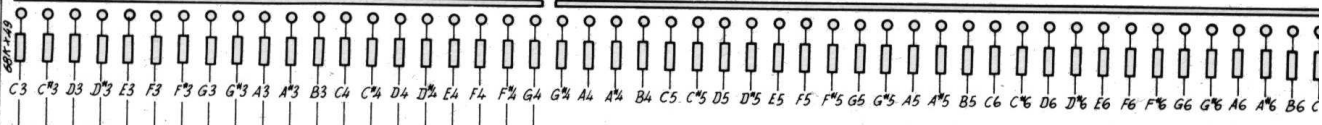
U.M. KEYSWITCHES

6800/1115275 (PA-476)Z

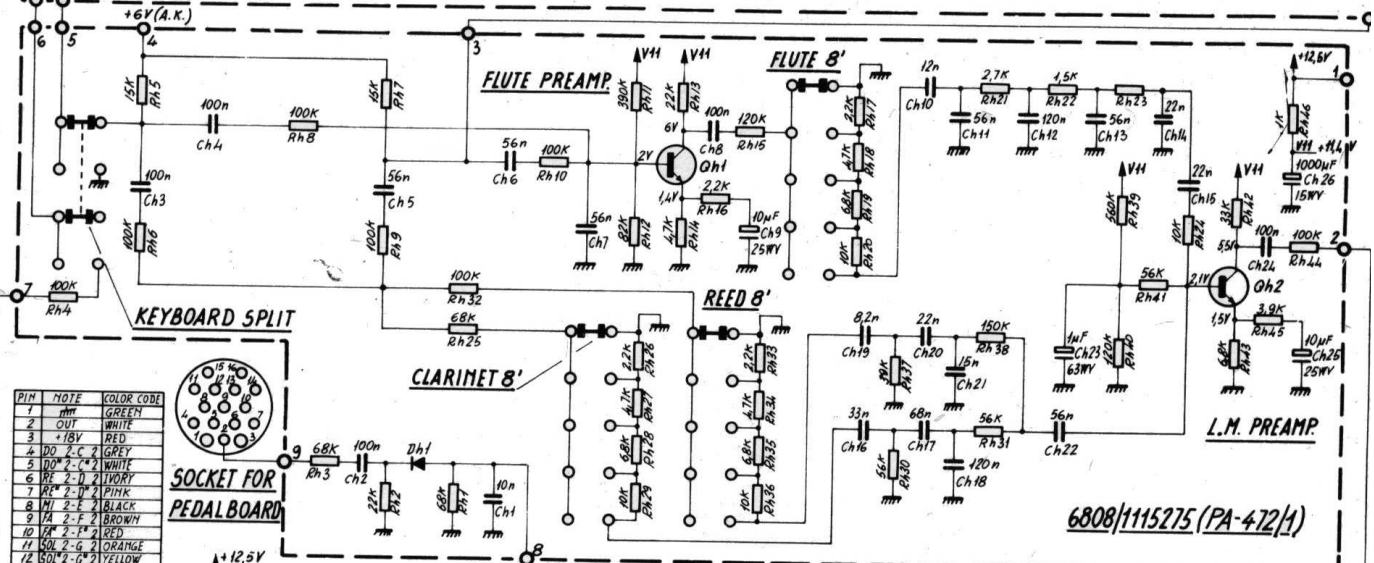




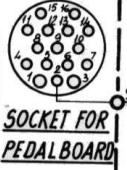
8'



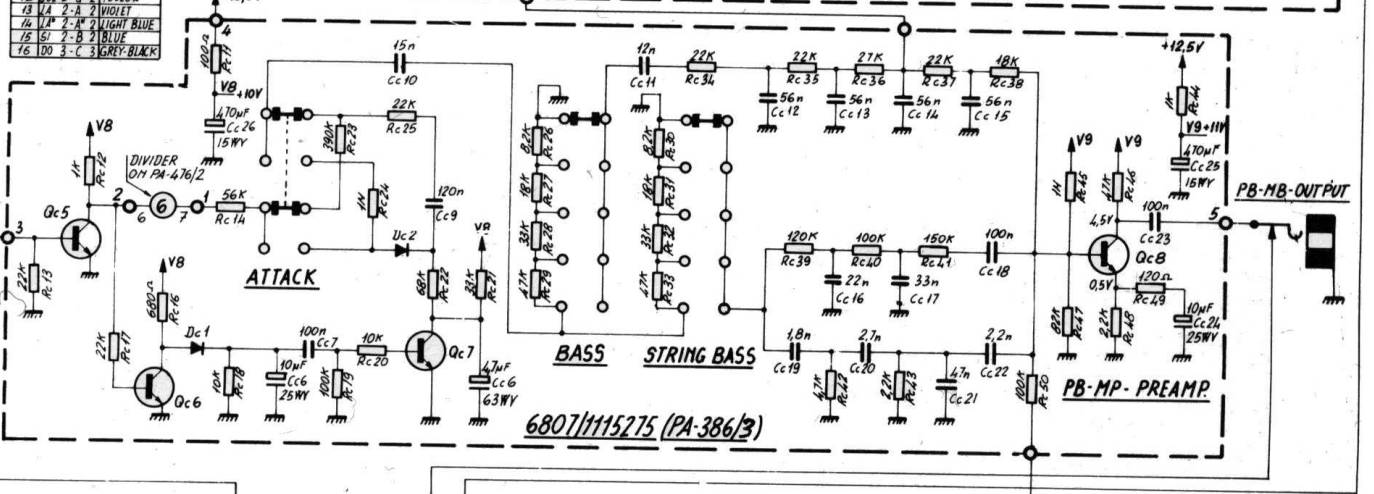
L.M. KEYSWITCHES 6560/1115271 (PA-471)



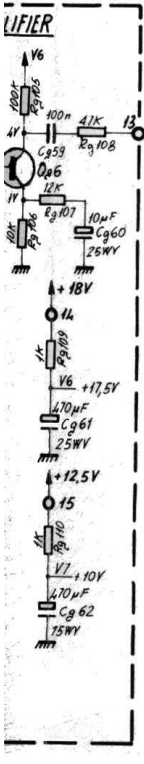
PIH	NOTE	COLOR CODE
1	mm	GREEN
2	OUT	WHITE
3	+18V	RED
4	DO 2-C 2	GREY
5	DO 2-C 2	WHITE
6	RE 2-D 2	IVORY
7	RE 2-D 2	PINK
8	MI 2-F 2	BLACK
9	FA 2-F 2	BROWN
10	FA 2-F 2	RED
11	SOL 2-G 2	ORANGE
12	SOL 2-G 2	YELLOW
13	LA 2-A 2	VIOLET
14	LA 2-A 2	LIGHT BLUE
15	SU 2-B 2	BLUE
16	DO 3-C 3	GREY-BLACK



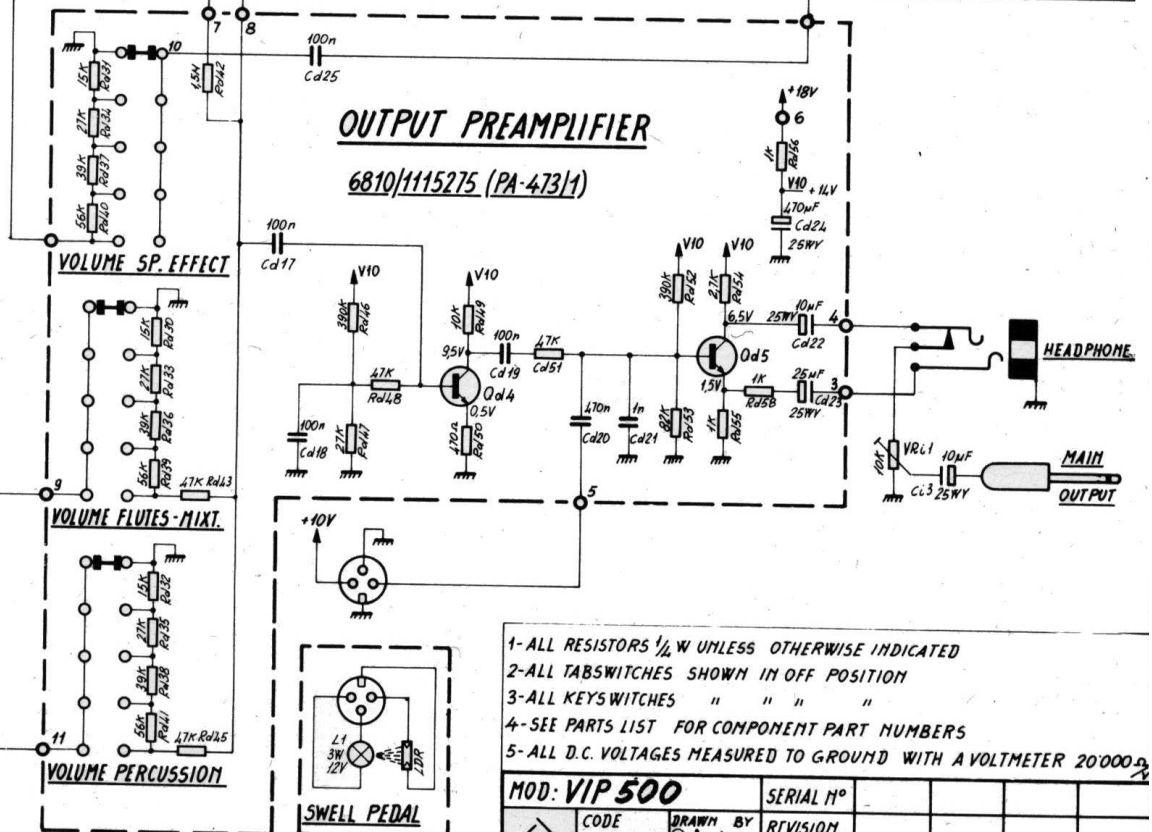
6808/1115275 (PA-472/1)



6807/1115275 (PA-386/3)



AMPLIFIER



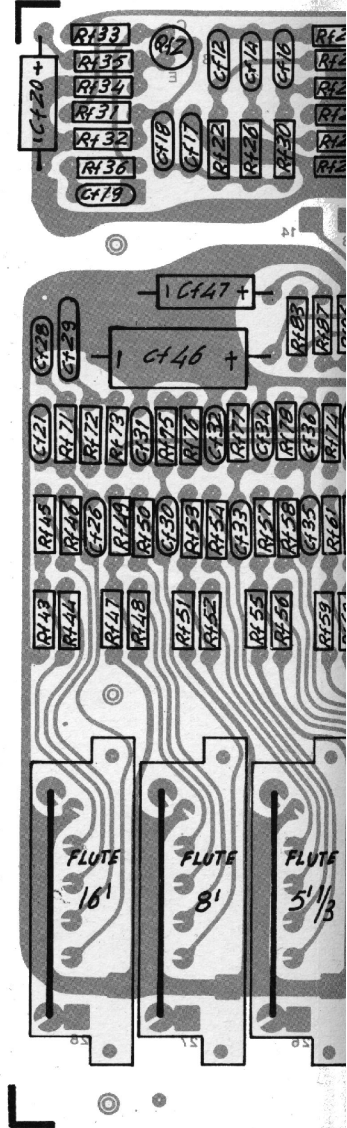
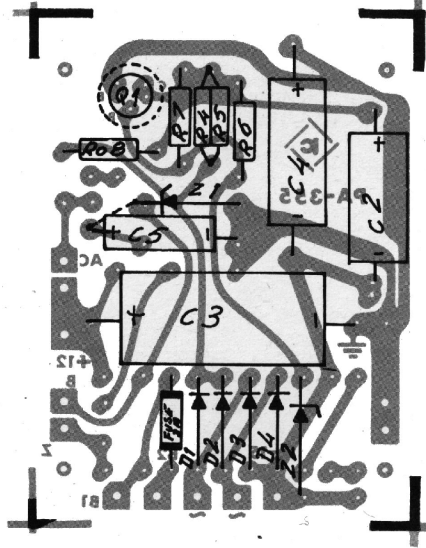
OUTPUT PREAMPLIFIER

6810/1115275 (PA-473/1)

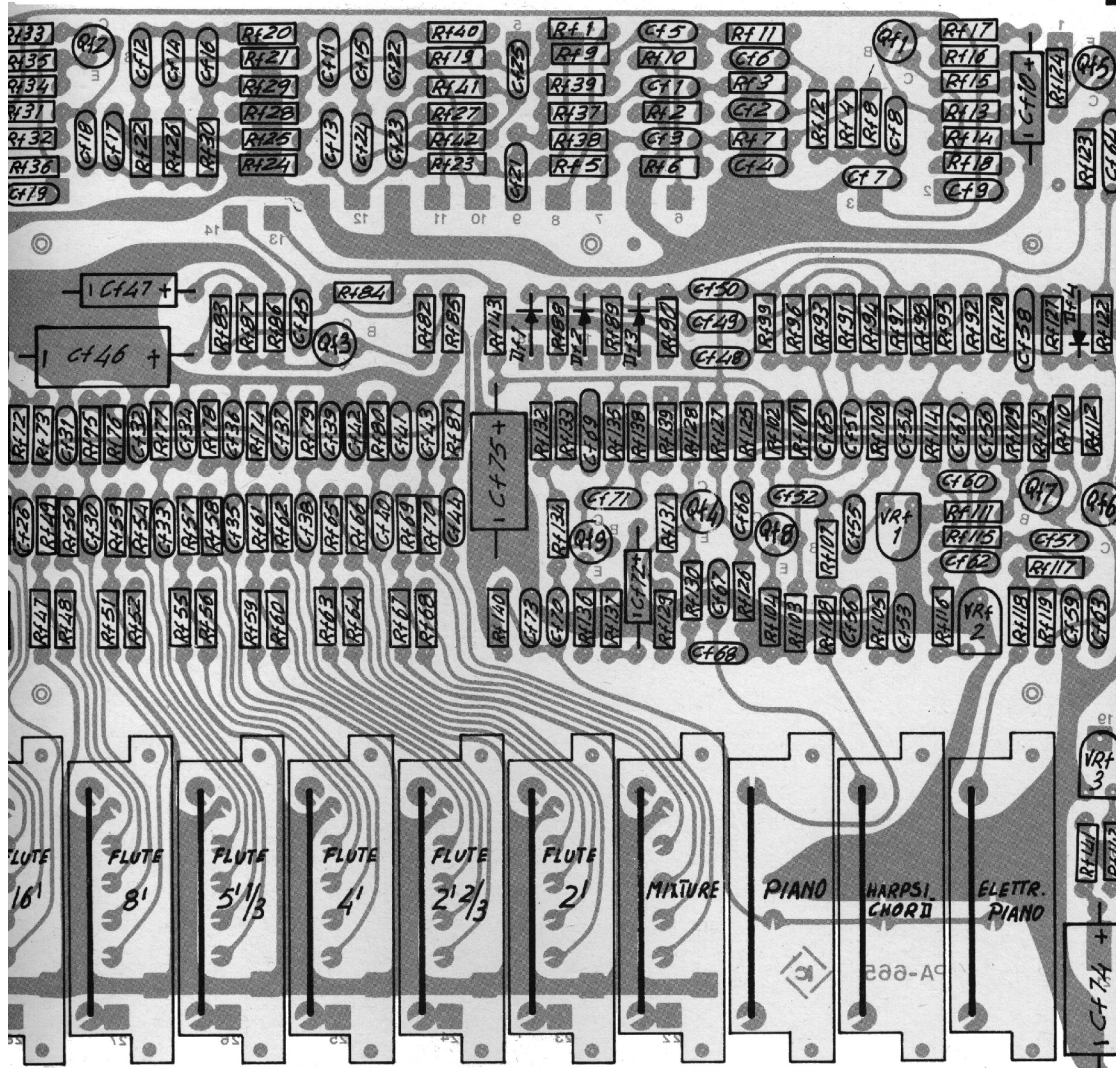
- 1- ALL RESISTORS 1/4 W UNLESS OTHERWISE INDICATED
- 2- ALL TABSWITCHES SHOWN IN OFF POSITION
- 3- ALL KEYSWITCHES " " " "
- 4- SEE PARTS LIST FOR COMPONENT PART NUMBERS
- 5- ALL D.C. VOLTAGES MEASURED TO GROUND WITH A VOLTMETER 20000-Ω

MOD: VIP 500		SERIAL N°	
CODE	DRAWN BY	REVISION	
5E/238	Checked by	DATE	

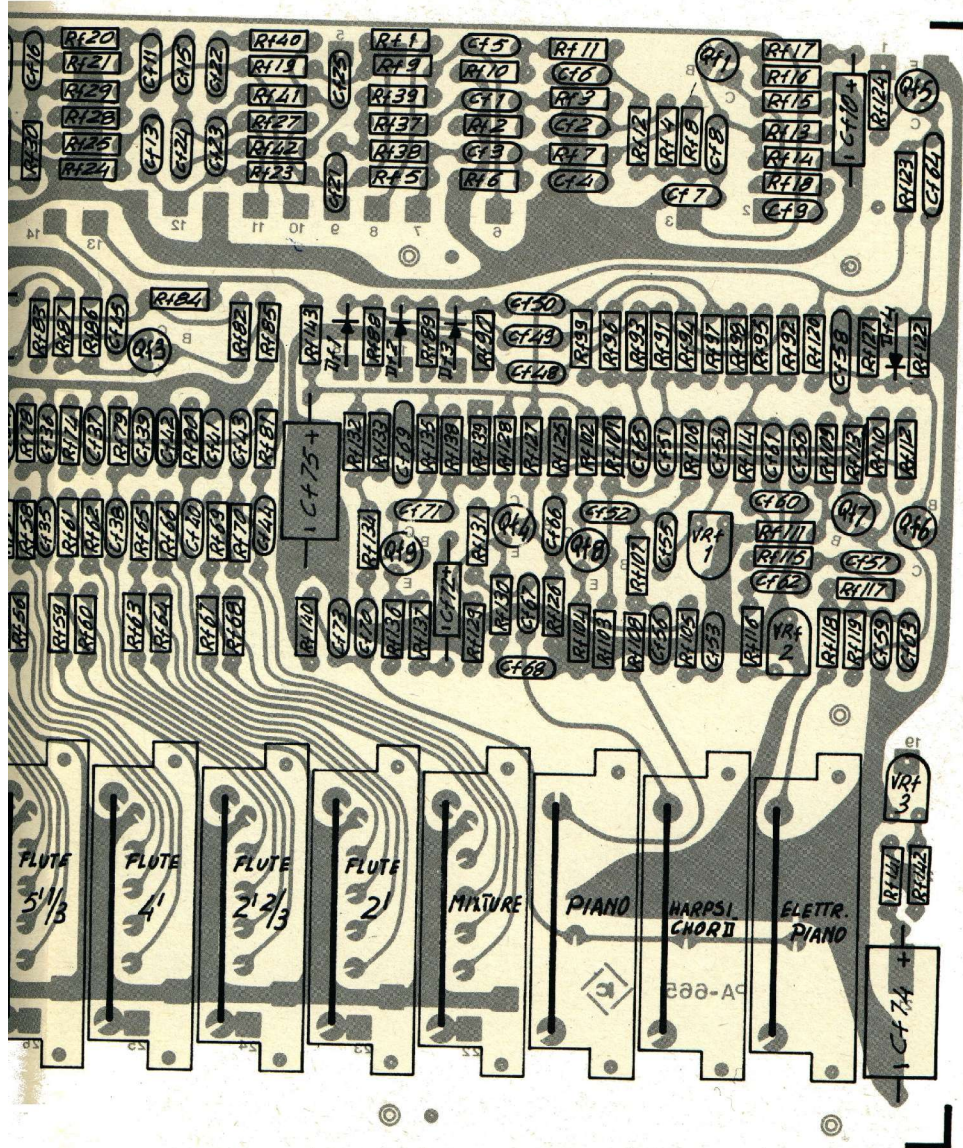
VOLTAGE REGULATOR BOARD PA 355/1



FLUTE & SPECIAL EFFECT FILTERS PA 665



FLUTE & SPECIAL EFFECT FILTERS PA 665

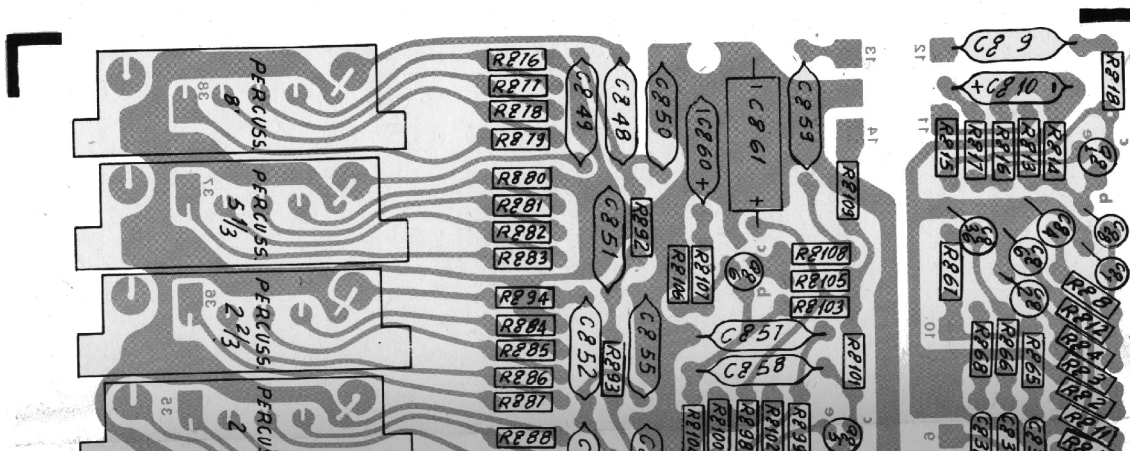
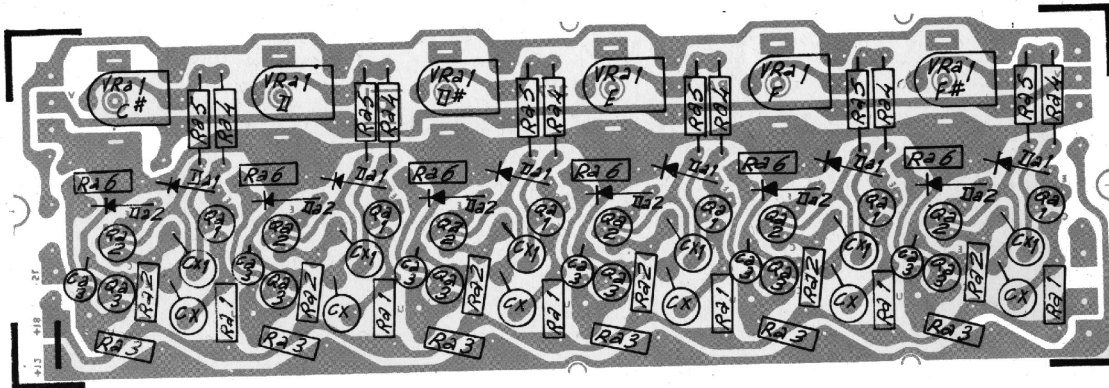


13
12
11
10
9
8
7
6
5
4
3
2
1

TONE GENERATOR

C# F#

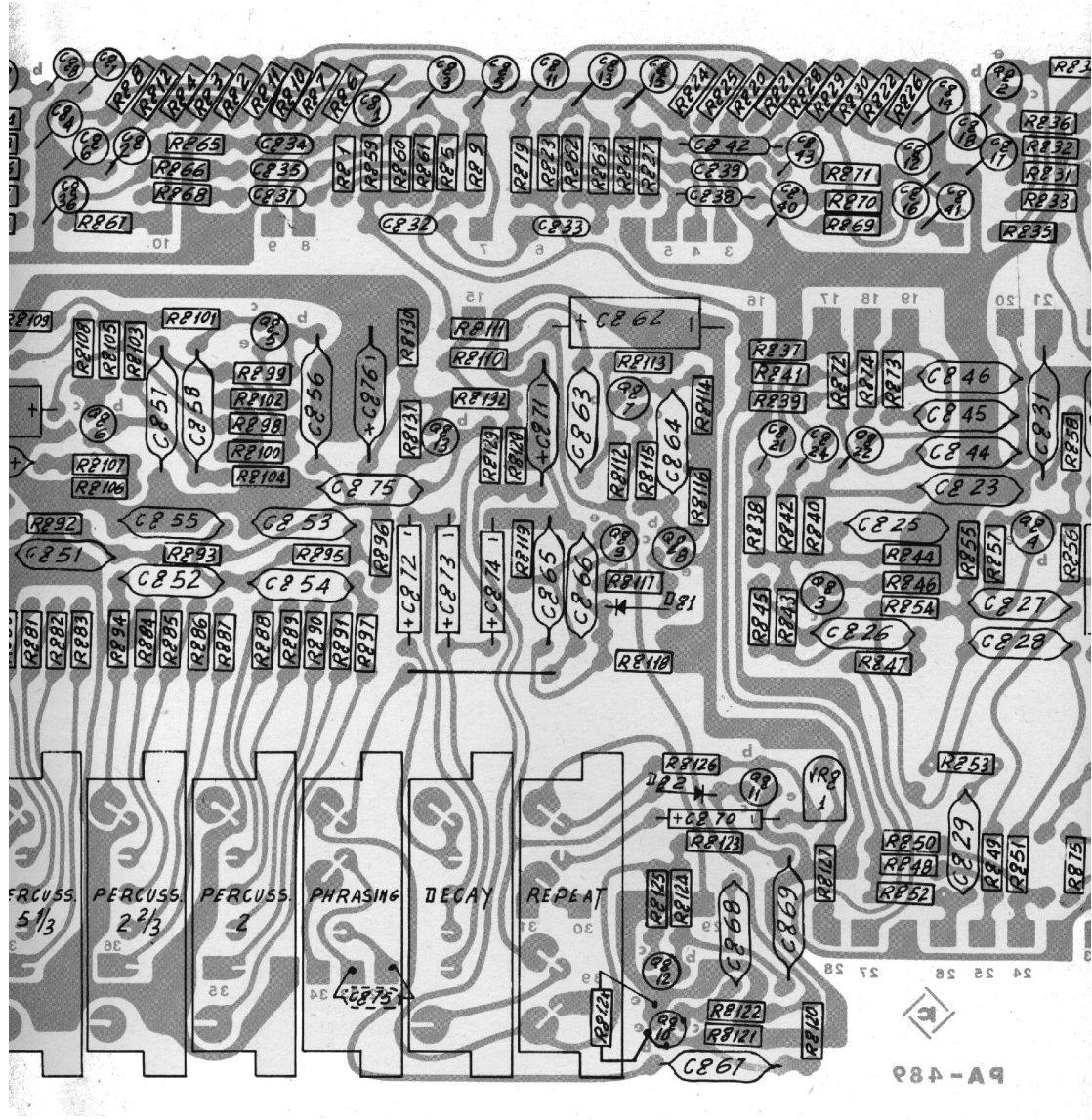
1/2 PA-357/2



PEI

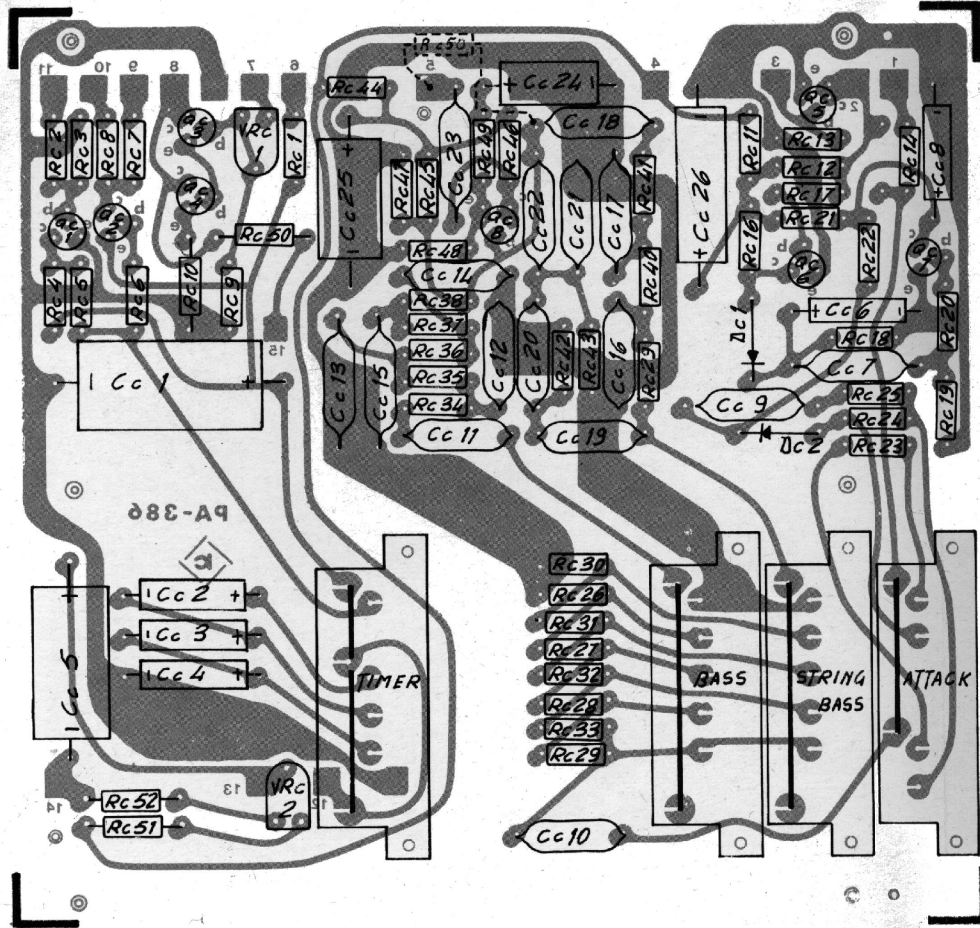
PERCUSSION FILTERS

PA 489/1

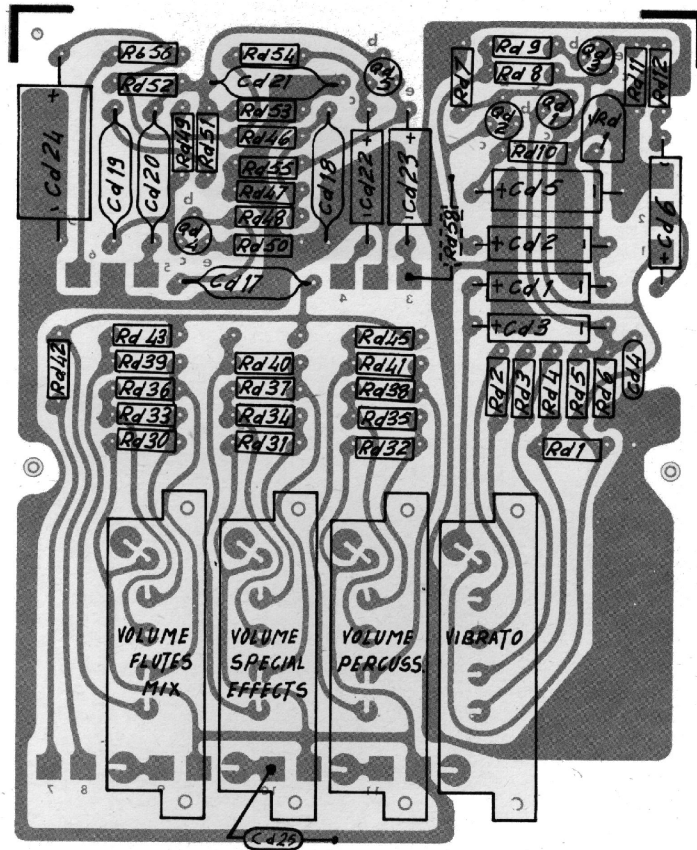


PA-489

BASS - ATTACK - SLALOM FILTERS PA 386/3



OUTPUT PREAMPLIFIER PA 473/1



PA-473

LOWER MANUAL FILTERS PA 472

