

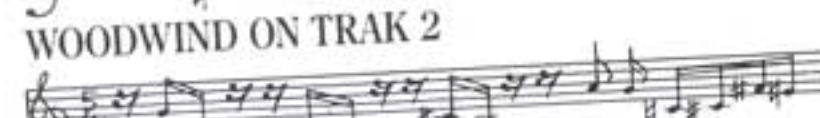
ON ONE INSTRUMENT...



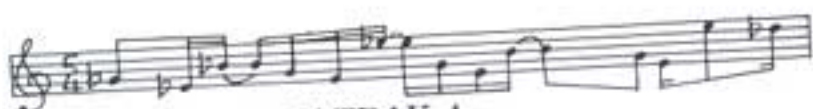
BRASS ON TRAK 1



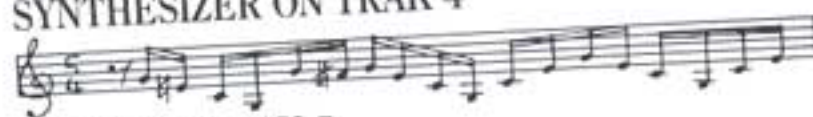
WOODWIND ON TRAK 2



GUITAR ON TRAK 3



SYNTHESIZER ON TRAK 4



PIANO ON TRAK 5



BASS ON TRAK 6

SIX-TRAK

A Fully Programmable, Multi-timbral Synthesizer.



 SEQUENTIAL
CIRCUITS INC

Your Personal Orchestra



SIX-TRAK:

A NEW GENERATION.

Synthesizers have opened up a world of new possibilities for creative musicians, offering thousands of exciting musical sounds at the touch of a key or the turn of a knob. The unique, multi-timbral Six-Trak by Sequential Circuits takes the evolution of synthesizers one step further. The Six-Trak lets you play up to six completely different sounds at one time. You can do this in two ways, either "live" from the keyboard, or by building songs one track at a time on the built-in six track digital sequencer/recorder. The Six-Trak gives you the creative control you need to put together complete arrangements and orchestrations.

EASY TO USE!

Just load in your song orchestration one part at a time, working out each sound and each note until you have it just right—no tape to rewind, no levels to check. When you have all the notes right, you can experiment with the arrangement: pick different bass sounds until you've found the correct one for your part; change the overall mix by using the programmable tracks volume control; or change the tempo of your piece (without changing the pitch). When you

have the entire arrangement perfected, just press a button and hear all of your work played back instantly, ready for taping or as a backing track for live performance. And all of this comes from one instrument!

COMPLETE MULTI-TIMBRAL ARRANGEMENTS!

There are two sequence locations on the instrument for storage and recall of two multi-timbral sequences, with a total storage capacity of more than 700 notes. The Six-Trak also lets you reserve voices so that you can play the keyboard "live" along with your sequence playback.

The Six-Trak sequencer features a wide range speed control. You can enter your parts as slowly as you like, making sure that all of the notes are correct, then, just speed the sequence up to the correct performance speed.

SIX INDEPENDENT VOICES!

The Six-Trak puts you in control of six complete synthesizer voices. These six voices can be dedicated to the same sound and the Six-Trak can be played "live" on the keyboard as a six-voice polyphonic synthesizer. They can also be used with the internal sequencer/recorder to create orchestrations using as many as six different sounds at one time.

FULLY PROGRAMMABLE!

Each voice on the Six-Trak includes a real multi-waveform analog VCO, a noise source, a resonant 4-pole lowpass filter, a VCA, three ADSR envelope generators, and a modulation LFO. Other features include polyglide, filter FM, inverted envelope options, modulation and pitch-bend wheels, and a unique two-mode arpeggiator. You have the choice of arpeggiating a chord in the traditional up/down manner or in the new "assign" mode, in which chords are arpeggiated in whichever order the keys are initially depressed.

The Six-Trak comes complete with 100 sounds programmed into its memory—a vast array of colors for use in your orchestrations. And, since the Six-Trak is fully programmable, you can store your own sounds as you create them (the convenient front-panel menu makes programming a snap!).

A POWERFUL LEAD INSTRUMENT!

Remember when it was necessary to hook extra synthesizer modules together in order to get expanded tone colors on a lead synthesizer? Now you can have all of that with one Six-Trak, thanks to the instrument's two powerful unison modes. First is standard UNISON, which layers all six voices (playing the same sound) to create the bold lead sound associated with all of SCI's Prophet instruments. Second is the

revolutionary new STACK mode, which allows you to layer up to six *different* monophonic sounds to create truly unique lead sounds. There are two "stack" memory locations for instant access to your favorite stack mode patches.

In both unison modes, the LEGATO switch lets you choose between two musically useful keyboard triggering modes. With "legato" on, the keyboard will only retrigger the envelope generators when you lift your hand from the keys—as long as you play legato, the notes will all articulate under the same envelope (like *Minimoog single triggering). With "legato" turned off, each note you play will *retrigger* the envelope generators. Both options are under your creative control.

AN EXPANDABLE SYSTEM!

The flexibility of the Six-Trak makes it an ideal instrument for many applications, from multi-timbral sketchpad arranging, to inexpensive, programmable 6-voiced polyphony, to bold lead instrument soloing. It offers many other possibilities as well. Since it is equipped with MIDI in and out ports, one cable is all that is needed to hook it to another MIDI-equipped synthesizer or drum machine such as SCI's powerful new DRUMTRAKS drum machine. This lets you synchronize the playback tempo of your Six-Trak sequences with rhythm patterns you have programmed on the Drumtraks.

MODEL 64: THE BASIC COMPUTER CONNECTION!

With SCI's Model 64 Sequencer, you enter the computer age with a complete computer/synthesizer system. When plugged into a *Commodore 64 computer, it becomes a powerful digital recorder. It gives you a 4000-note memory and advanced editing features for creating complex songs on MIDI-equipped synthesizers. Drum machines like Drumtraks connect to the system as well. The Model 64 Sequencer has been designed to be used with MIDI-equipped synthesizers from many manufacturers. For ease-of-use, its operating program is *built-in*, so for basic operation there is no need for an external software-loading device like a disk drive. It is designed to be run with a monitor.

The 64's basic operation features include Record, Playback, Transpose, multi-trak Overdubbing, and rhythm Auto-Correct. Eight different sequences can be defined in basic memory, and these can then be combined into songs. Using a Commodore datasette cassette recorder, all of this information can be stored on tape.

*Minimoog is a registered trademark of Moog.

*The Commodore 64 is a registered trademark of Commodore Computers.

SIX-TRAK EXPANSION SOFTWARE: NO LIMITATIONS!

The Model 64 is just the beginning, though. By using a monitor and a disk drive, you can make use of SCI's new *expansion software package*, which makes the Six-Trak an even more powerful musician's tool.

SUPER-PATCHES!

SCI offers the unique Super-Patch software mode, which allows you to split the Six-Trak's keyboard into as many as three sections (of any size), and then assign the Six-Trak's voices to the different keyboard segments. For example: you might split the keyboard in order to assign one voice to the bottom octave for bass. At the same time, you then assign two voices to the middle octave. These voices could be programmed to sound like an electric piano for playing two-part fills. Finally you might split the keyboard again so that the top two octaves can be programmed with three different sounds in stack mode for a *screamer* lead sound. In other words, multi-timbral orchestra comes alive under your fingers for "live" playing. A full 100 super-patches can be defined at a time.



HOLD DOWN THE KEYS (MAXIMUM 2 KEYS)
WHERE YOU WOULD LIKE TO SPLIT THE
KEYBOARD AND PRESS THE FOOTSWITCH.

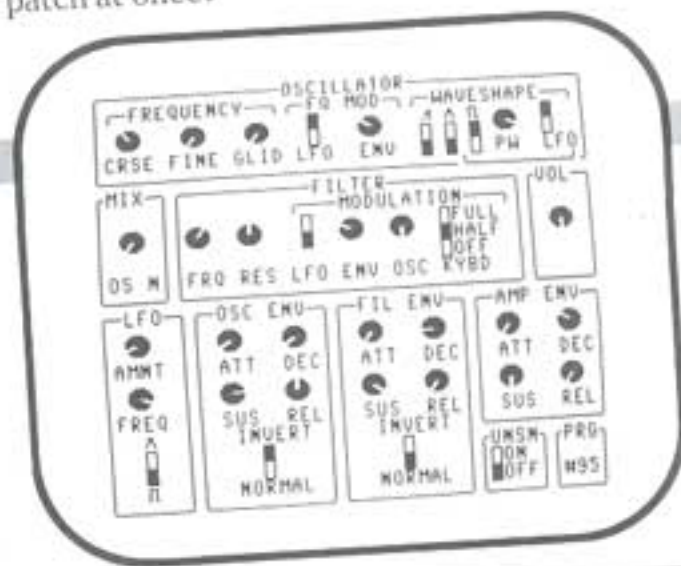
MULTI-TIMBRAL SEQUENCER!

The expansion software allows you to create multi-timbral sequences and songs (just like the Six-Trak's basic operation mode). Total memory capacity is more than 4000 notes! Plus, the *Six-Trak Multi-Timbral Sequencer* program will drive two Six-Traks at once. This lets you utilize 12 voices in your song arrangement. When connected with Drumtraks, the system also allows for full rhythm auto-correcting.



VISIBLE PROGRAMMING!

The *Six-Trak Programmer* portion of the expansion software lets you create and store groups of 100 Six-Trak programs. Just like the Six-Trak, you say? Well, look again, because the program turns the computer's monitor screen into a full synthesizer front panel (complete with knobs and switches) so that you can instantly see and program the values of all parts of your patch at once!



STILL EASY TO USE!

All of the material you create with this expansion software can be stored on data disks. And you don't need to be a programmer to use the expansion software, since most of it operates directly from the Six-Trak, using the front panel controls, wheels, and optional footswitch.

The **SIX-TRAK SYSTEM**—another new concept from Sequential Circuits, the leader in affordable high-technology for the creative musician.

AN IMPORTANT NOTE: ABOUT MIDI

What MIDI Is:

MIDI (Musical Instrument Digital Interface) is a standardized computer code that allows two instruments that are under microprocessor control to "talk" to each other (more exactly, it allows the two microprocessors to exchange information). Home computers can also use MIDI to communicate with MIDI-equipped machines, since their technology is also based on microprocessors.

The microprocessors in today's instruments perform many functions—they are like a central clearing house for information. Through MIDI, certain information that is normally transferred internally in a synthesizer (like whether a key is being held down or not) can be sent to another instrument. This information from the "master" instrument will be read by the microprocessor in the "slave" and be acted on as if it were generated internally.



means they will only function with the instruments they are told to understand.

Therefore, be very careful when shopping for MIDI software and hardware. When in doubt, try it out first. *Don't assume.*



What MIDI Isn't:

MIDI *does not* allow instruments to control each other completely, because the internal operating systems of instruments are different. You can't change a filter setting on one instrument from another via MIDI, if the two microprocessors deal with that kind of information in a different way. Also, the two instruments may have different kinds of filters, in which case there will be two completely different approaches to filter settings involved.

This is important when it comes time for you to investigate computer control via MIDI. Many manufacturers will be offering MIDI-like software (that is, software that controls an instrument through connections made at the MIDI ports). Some of the software will be specifically designed to work with a certain instrument, and will therefore perform many functions that are not usually possible through the basic MIDI instrument-to-instrument connection. *These programs will only run with the instruments for which they are designed, and only on the computers for which they were programmed.* It is true that computers are general-purpose instruments (in that they can be told to do almost anything). But, once they are told to do something (once they are programmed via software), they will only do what they have been told. And that

ANOTHER IMPORTANT NOTE: ABOUT COMPUTERS

At present, the music industry is just beginning to design instruments and programs that use the home computer as a vital link in creative music making. We know that the computer will be a great musical tool. However, please remember that you must take as much time finding a computer that is tailored to your music as you spent looking for the rest of your musical equipment. Consider your needs before you buy. If you need 100% computer reliability and 100% computer stability for live performance, you should expect to pay for it (\$2000–\$5000 in today's market). If, on the other hand, you plan to work in a home studio where there is time to deal with occasional problems, a more modest system may fit your needs as well as your budget. Computers range in price, power, and reliability the same way musical instruments do. SCI will make its software compatible with a number of home computers in different price ranges, so you will have the choice. Just remember: shop carefully.



SIX-TRAK SPECIFICATIONS

VOICES:

The Six-Trak is a fully programmable six-voice synthesizer featuring 100 programs. Each program features 36 independently accessible parameters. Each voice consists of:

- One Voltage Controlled Oscillator**
Waveshapes available are sawtooth, triangle, variable pulse. Tuning: 4 octave range.
- One Voltage Controlled Low Pass Filter**
24dB/octave slope
- One Voltage Controlled Amplifier**
- One Low Frequency Oscillator**
Waveshapes available: square wave, Rate: 1-33 Hz
triangle, Rate: .1-12.5 Hz
- Three Envelope Generators**
Attack: 7 milliseconds-12 seconds
Delay: 7 milliseconds-12 seconds
Sustain: 0 to 10 volts
Release: 7 milliseconds-14 seconds
Oscillator and Filter envelopes can be inverted.
- One White Noise Generator**

MULTI-TRACK CONTROLLER:



Arpeggiator

Arpeggiator plays voice #6. Latchable volume can be adjusted. Separate program can be selected to play along.

Stack Mode

A special unison mode in which each of the six voices can have a different program. Volume is individually adjustable.

Sequencer

Two sequence locations: Sequence A and Sequence B. Total storage for both is 750 notes. Each sequence can be composed of up to six independent voices.

Each voice can feature a different program. Each track can be independently overdubbed or erased.

Legato: when on, acts as a "single trigger" effect for arpeggiator or Stack Mode.

Track Volume: used to adjust volume of each voice in sequence or Stack Mode (voice 6 only in Arpeggiator Mode).

Speed: Adjusts speed of Arpeggiator or Sequencer. (External clock selection when turned fully counter-clockwise.)

Keyboard

Four octave (C to C)

Outputs

Audio Output: 1/4" phone jack. Can drive stereo headphones.

One MIDI: 5 pin DIN

Inputs

One multi-function footswitch jack: 1/4" phone.

One MIDI: 5 pin DIN

MIDI Implementation

OMNI Mode

POLY Mode

MONO Mode

Channel assignable 1-16 (parameter #36)

Other

Power: 110-125 Volt or 220-240 Volt

Dimensions: 4 1/2" high, 28" wide, 12" deep

Weight: 17 1/2 lbs.



3051 North First Street, San Jose, CA 95134
Telex: 4997150 SEQCIR

In Europe:

Sequential Circuits/Europe

P.O. Box 16

3640 AA Mijdrecht, Netherlands

Telex: 12721 SQNTL