

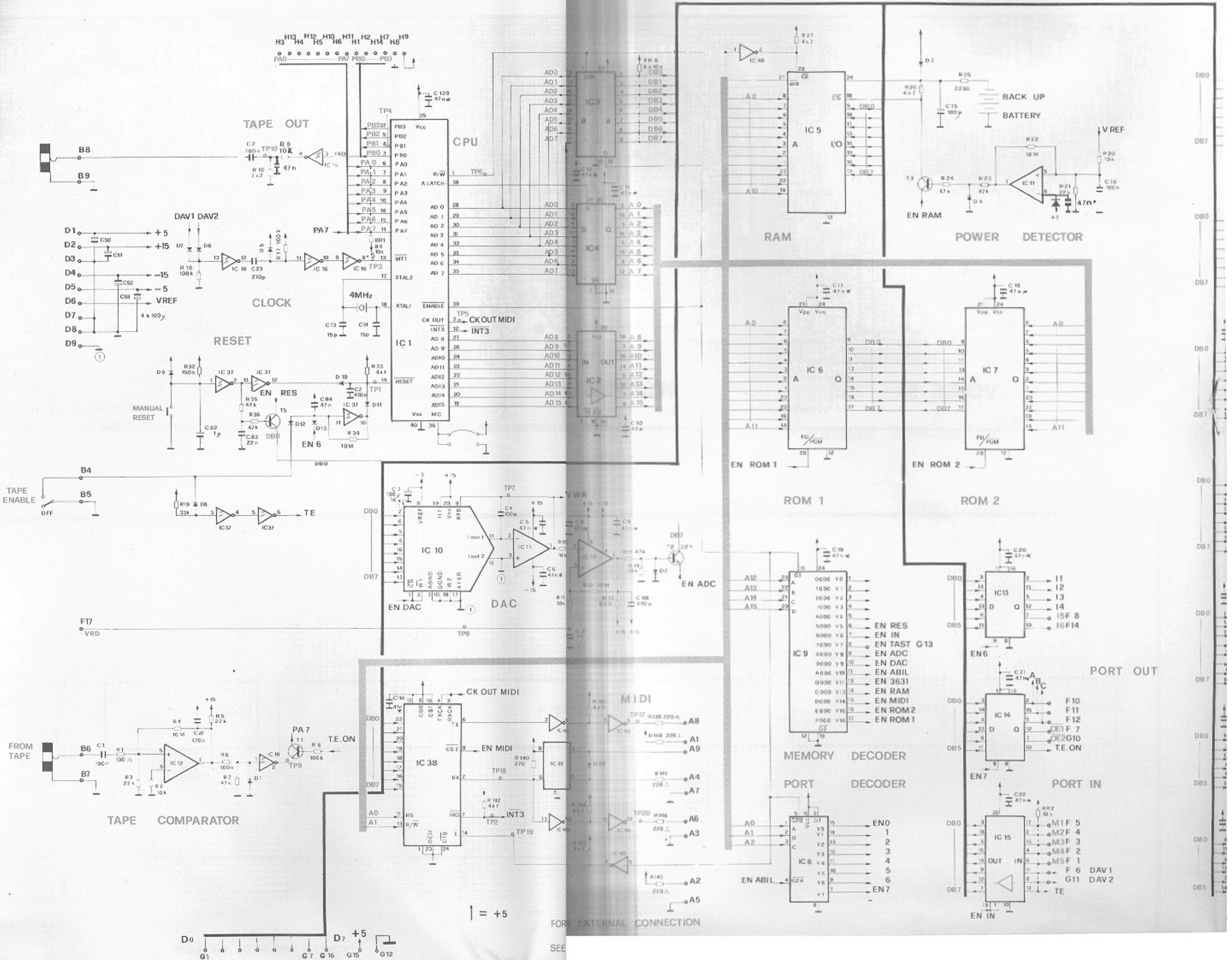
**SIEL DK700 Schematics**

**A pity of the bad quality. If certain details are unclear let me know.**

**Sander Meyer**

**Siel Synthesizers Website**

**<http://siel.sendex.nl>**



**TAPE OUT**

**DAV1 DAV2**

**CLOCK**

**RESET**

**TAPE ENABLE**

**TAPE COMPARATOR**

↑ = +5

FOR EXTERNAL CONNECTION

SEE

**RAM**

**POWER DETECTOR**

**ROM 1**

**ROM 2**

**MEMORY DECODER**

**PORT DECODER**

**PORT OUT**

**PORT IN**

**CPU**

**DAC**

**MIDI**

**BACK UP BATTERY**

**EN RAM**

**EN ROM 1**

**EN ROM 2**

**EN6**

**EN7**

**EN IN**

**EN7**

**EN IN**

**EN IN**

**EN IN**

**EN IN**

**EN IN**

**EN IN**

**EN IN**

**EN IN**

**EN IN**

**EN IN**

**EN IN**

**EN IN**

**EN IN**

**EN IN**

**EN IN**

**EN IN**

**EN IN**

**EN IN**

**EN IN**

**EN IN**

**EN IN**

**EN IN**

**EN IN**

**EN IN**

**EN IN**

**EN IN**

**EN IN**

**EN IN**

**EN IN**

**EN IN**

**EN IN**

**EN IN**

**EN IN**

**EN IN**

**EN IN**

**EN IN**

**EN IN**

**EN IN**

**EN IN**

**EN IN**

**EN IN**

**EN IN**

**EN IN**

**EN IN**

**EN IN**

**EN IN**

**EN IN**

**EN IN**

**EN IN**

**EN IN**

**EN IN**

**EN IN**

**EN IN**

**EN IN**

**EN IN**

**EN IN**

**EN IN**

**EN IN**

**EN IN**

**EN IN**

**EN IN**

**EN IN**

**EN IN**

**EN IN**

**EN IN**

**EN IN**

**EN IN**

**EN IN**

**EN IN**

**EN IN**

**EN IN**

**EN IN**

**EN IN**

**EN IN**

**EN IN**

**EN IN**

**EN IN**

**EN IN**

**EN IN**

**EN IN**

**EN IN**

**EN IN**

**EN IN**

**EN IN**

**EN IN**

**EN IN**

**EN IN**

**EN IN**

**EN IN**

**EN IN**

**EN IN**

**EN IN**

**EN IN**

**EN IN**

**EN IN**

**EN IN**

**EN IN**

**EN IN**

**EN IN**

**EN IN**

**EN IN**

**EN IN**

**EN IN**

**EN IN**

**EN IN**

**EN IN**

**EN IN**

**EN IN**

**EN IN**

**EN IN**

**EN IN**

**EN IN**

**EN IN**

**EN IN**

**EN IN**

**EN IN**

**EN IN**

**EN IN**

**EN IN**

**EN IN**

**EN IN**

**EN IN**

**EN IN**

**EN IN**

**EN IN**

**EN IN**

**EN IN**

**EN IN**

**EN IN**

**EN IN**

**EN IN**

**EN IN**

**EN IN**

**EN IN**

**EN IN**

**EN IN**

**EN IN**

**EN IN**

**EN IN**

**EN IN**

**EN IN**

**EN IN**

**EN IN**

**EN IN**

**EN IN**

**EN IN**

**EN IN**

**EN IN**

**EN IN**

**EN IN**

**EN IN**

**EN IN**

**EN IN**

**EN IN**

**EN IN**

**EN IN**

**EN IN**

**EN IN**

**EN IN**

**EN IN**

**EN IN**

**EN IN**

**EN IN**

**EN IN**

**EN IN**

**EN IN**

**EN IN**

**EN IN**

**EN IN**

**EN IN**

**EN IN**

**EN IN**

**EN IN**

**EN IN**

**EN IN**

**EN IN**

**EN IN**

**EN IN**

**EN IN**

**EN IN**

**EN IN**

**EN IN**

**EN IN**

**EN IN**

**EN IN**

**EN IN**

**EN IN**

**EN IN**

**EN IN**

**EN IN**

**EN IN**

**EN IN**

**EN IN**

**EN IN**

**EN IN**

**EN IN**

**EN IN**

**EN IN**

**EN IN**

**EN IN**

**EN IN**

**EN IN**

**EN IN**

**EN IN**

**EN IN**

**EN IN**

**EN IN**

**EN IN**

**EN IN**

**EN IN**

**EN IN**

**EN IN**

**EN IN**

**EN IN**

**EN IN**

**EN IN**

**EN IN**

**EN IN**

**EN IN**

**EN IN**

**EN IN**

**EN IN**

**EN IN**

**EN IN**

**EN IN**

**EN IN**

**EN IN**

**EN IN**

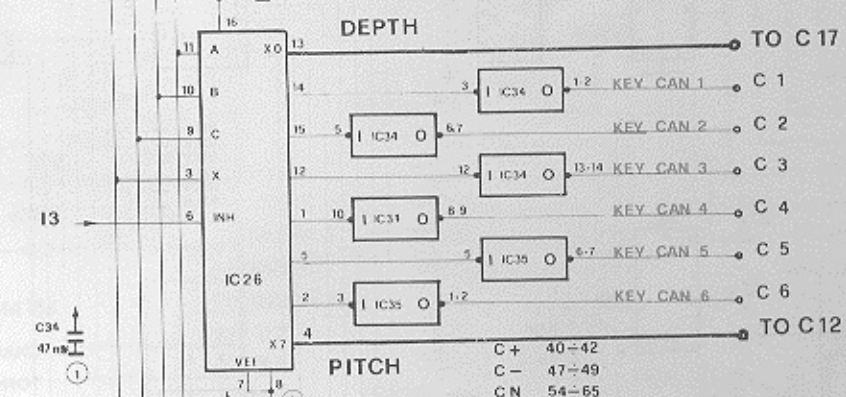
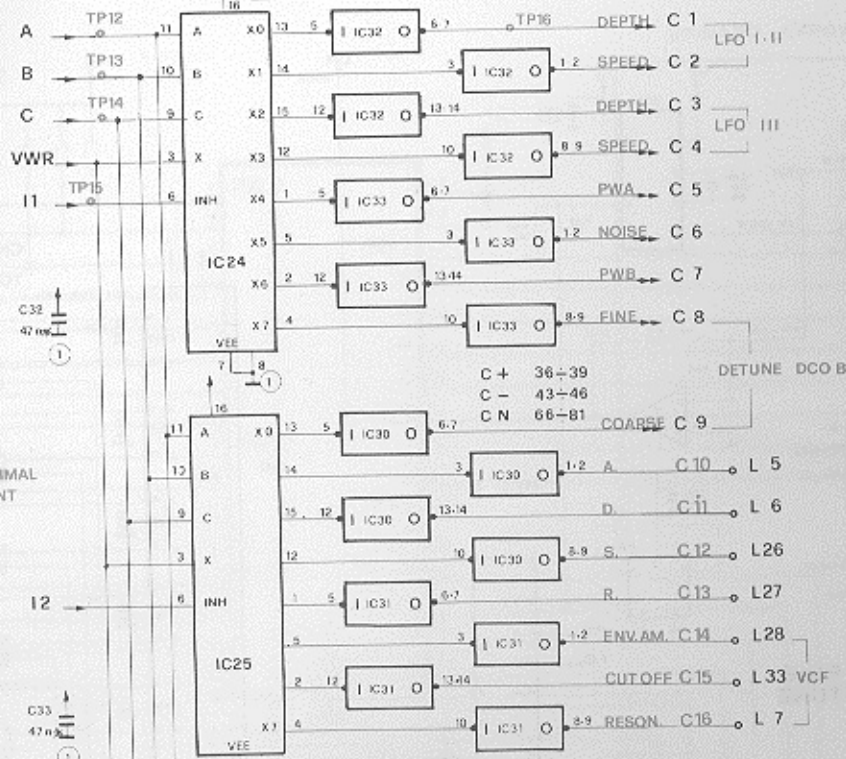
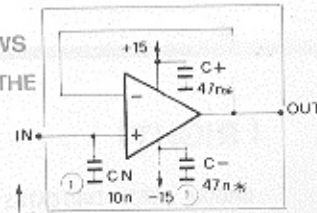
**EN IN**

**EN IN**

**EN IN**

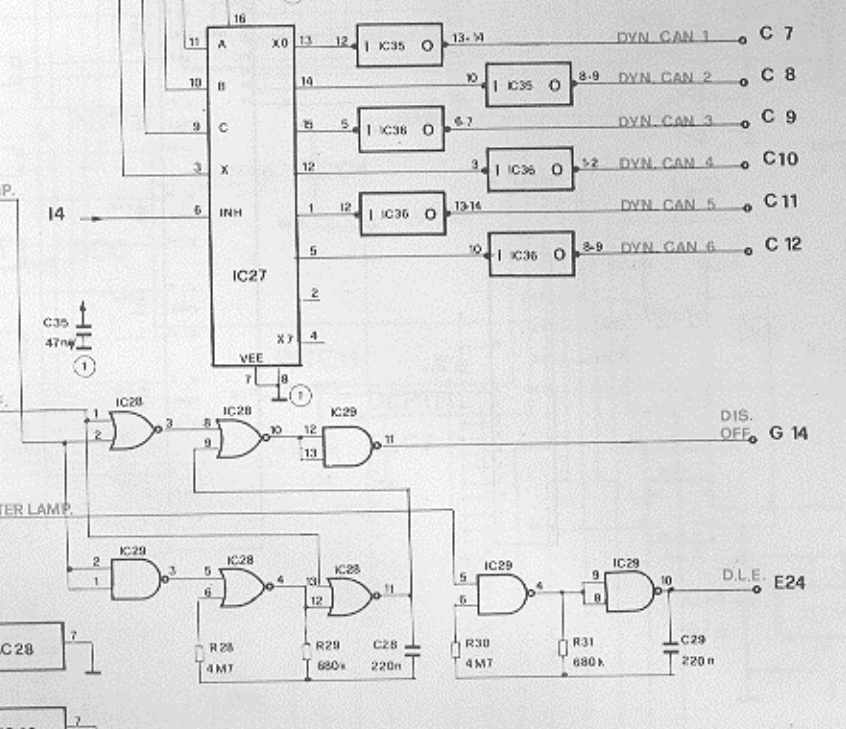
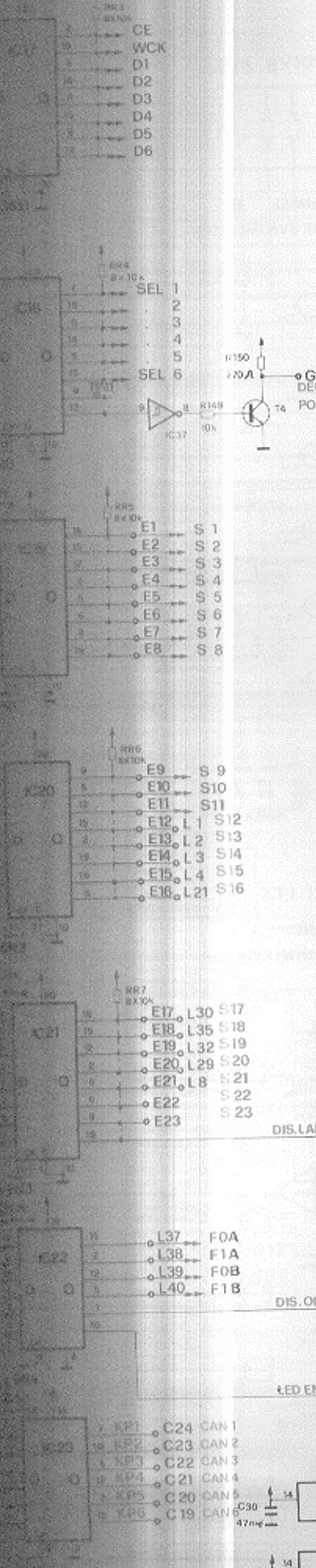
THIS SCHEMATIC SHOWS  
CONTENT OF EACH OF THE  
FOLLOWING BLOCKS.

### C. V. DEMULTIPLEXER (SAMPLE/HOLDS)



TO C 17  
GENERATION  
SECTION

TO C 12  
GENERATION  
SECTION

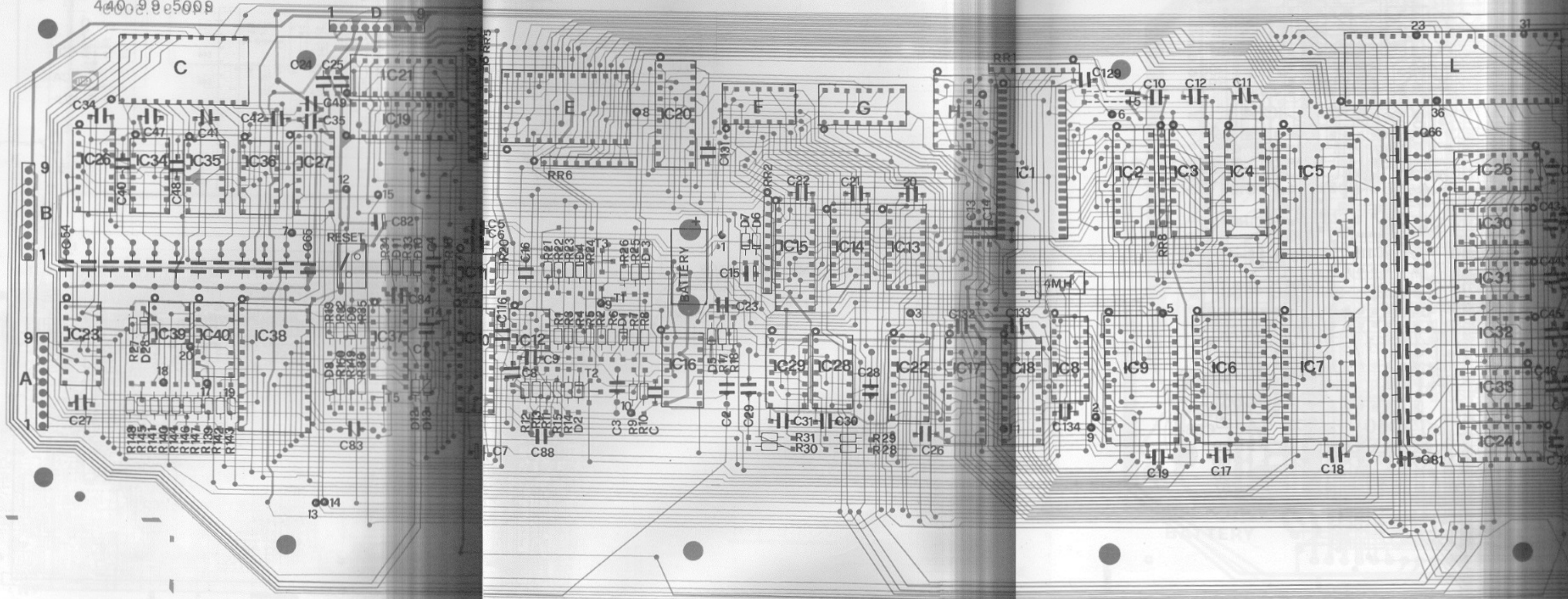


## C.P.U. BOARD

I C 1	TMS 7000	367.99.4704
I C 2-15	74LS244	367.99.6516
I C 3	74LS245	367.99.6507
I C 4	74LS373	367.99.6508
I C 5	6116	367.99.4663
I C 6-7	2532	367.99.4862
I C 8	74LS138	367.99.6564
I C 9	74LS154	367.99.6563
I C 10	DAC0831	367.99.7022
I C 11	TL082	367.99.7009
I C 12	LM393	367.99.7011
I C 13-14-22	23 74C174	367.99.6034
I C 16-37	40106	367.99.6029
I C 17-21	74LS377	367.99.6509
I C 24-27	59-61 4051	367.99.6013
I C 28	4001	367.99.6001
I C 29-44-46	4011	367.99.6002
I C 30-36	49-53-58	
	55 TL084	367.99.7021
I C 38	68650	367.99.5024
I C 39	6N138	361.99.9501
I C 40	SN 7406	367.99.6301
I C 41-43	4081	367.99.6006
I C 47-48	RI104	367.99.5021
I C 50-54-57	4016	367.99.6004
I C 51-67	3080	367.99.7006
I C 52	4053	367.99.6031
I C 55-56	13700	367.99.7005
I C 60-62	4013	367.99.6003

CPU SECTION P.C. 440 99 5009 OR 5010 (LEFT)

440 99 5009



### WAVEFORMS GENERATOR B

### WAVEFORMS GENERATOR A

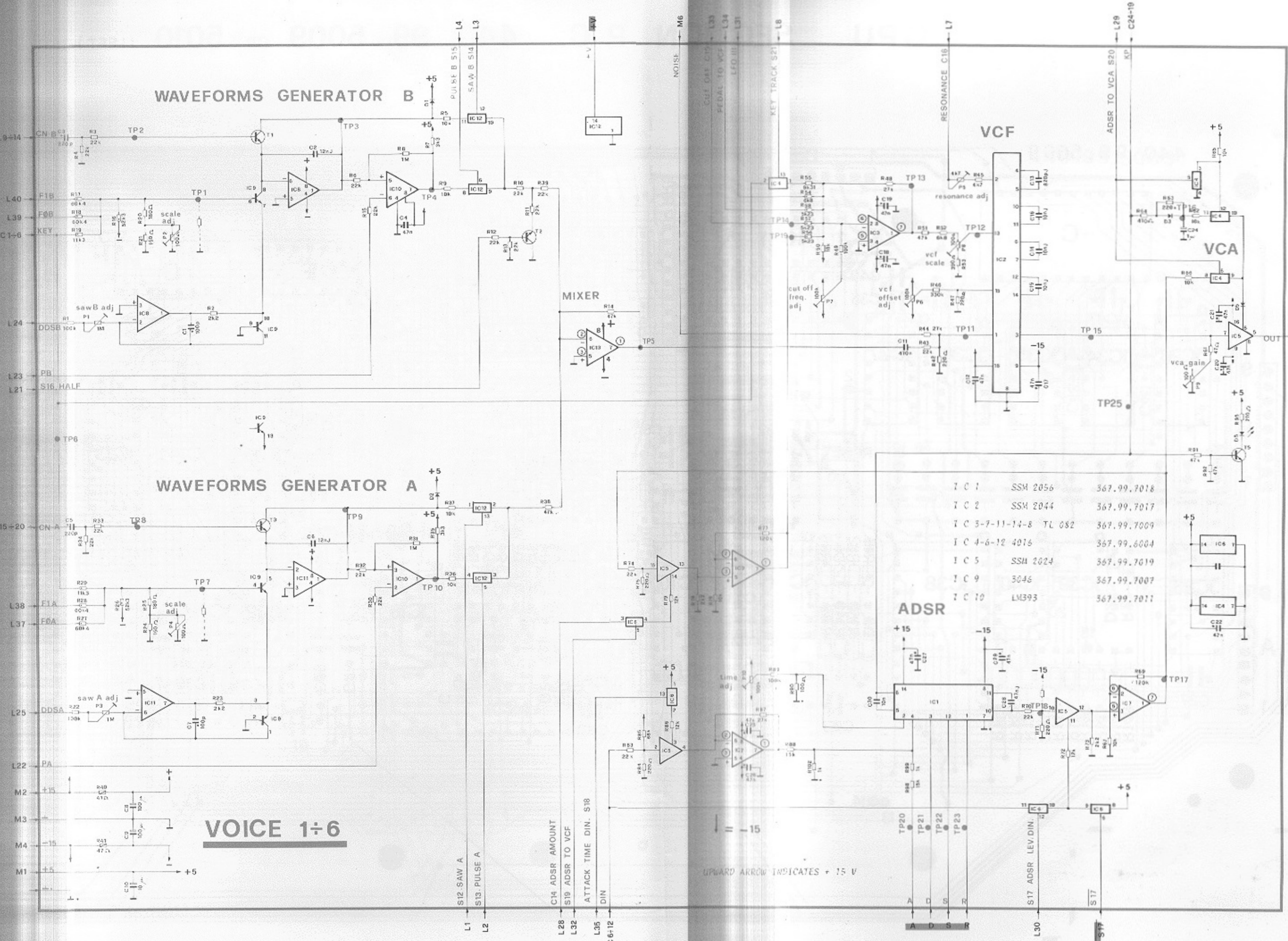
### VOICE 1-6

### MIXER

### VCF

### VCA

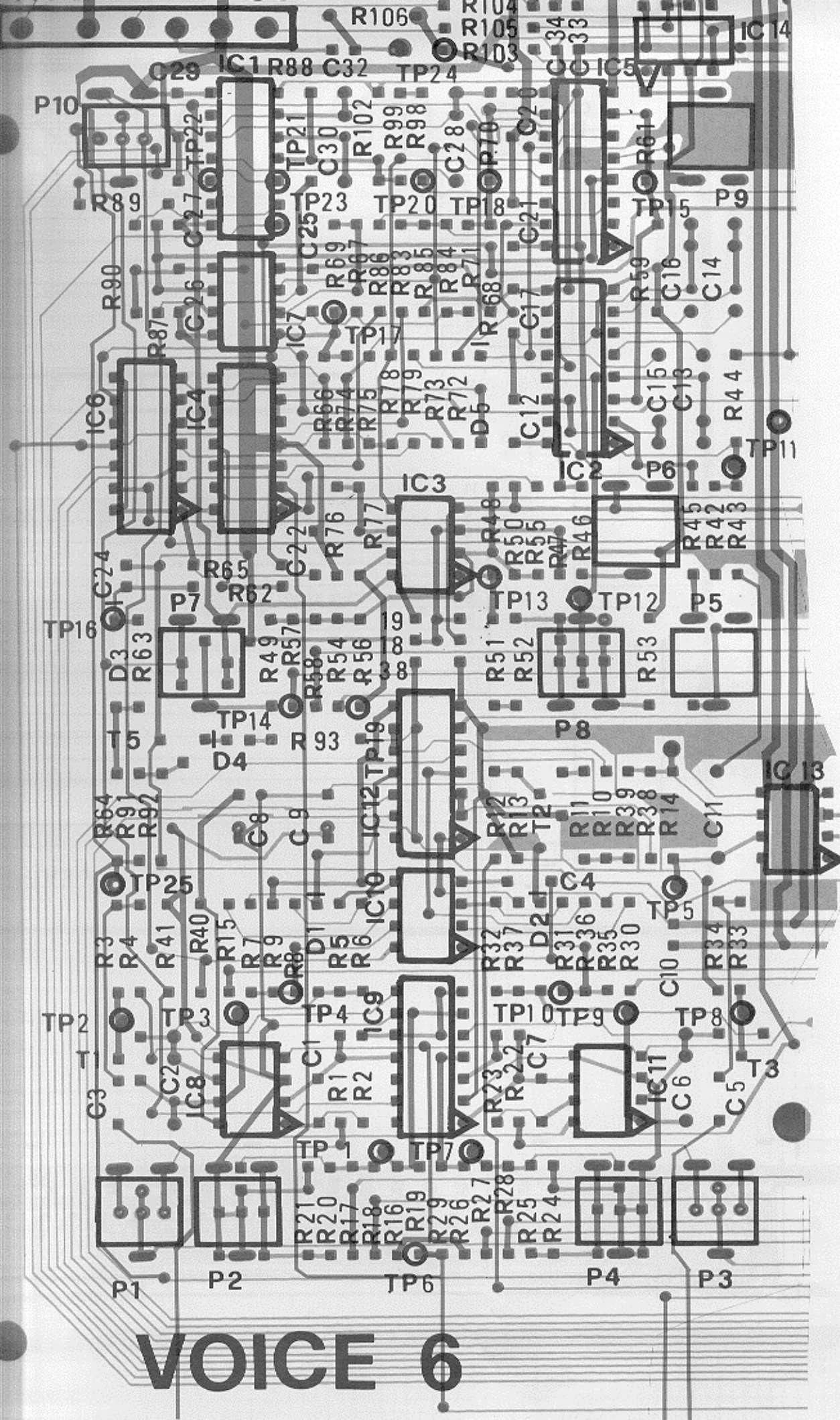
### ADSR

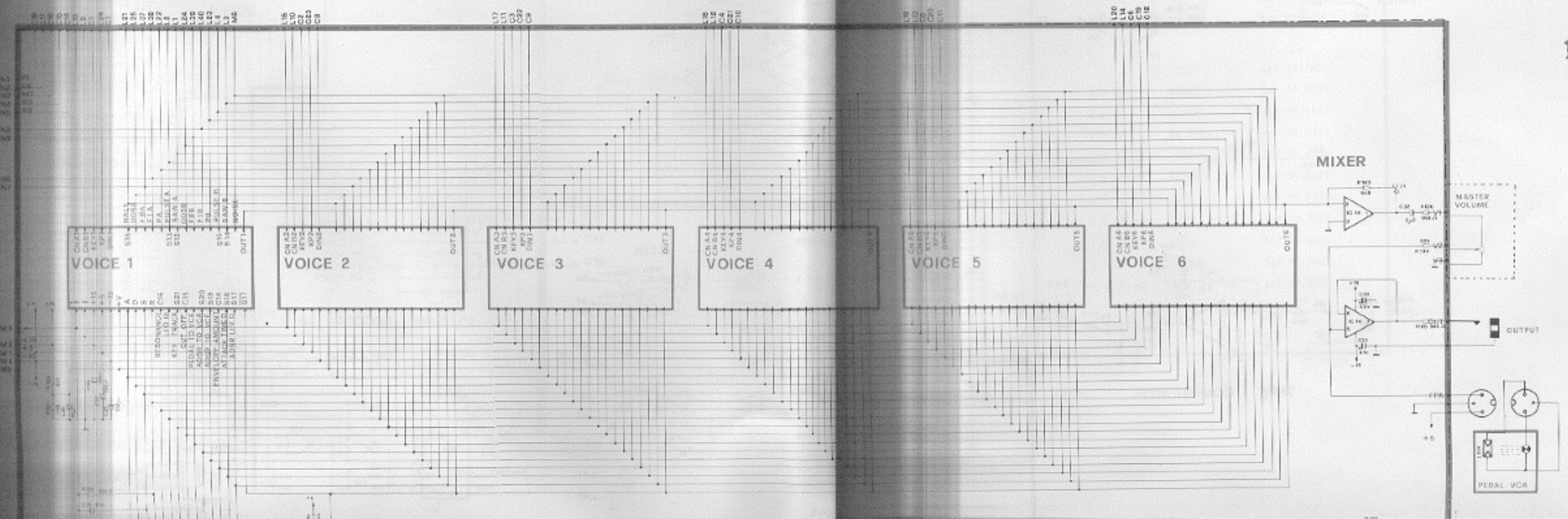
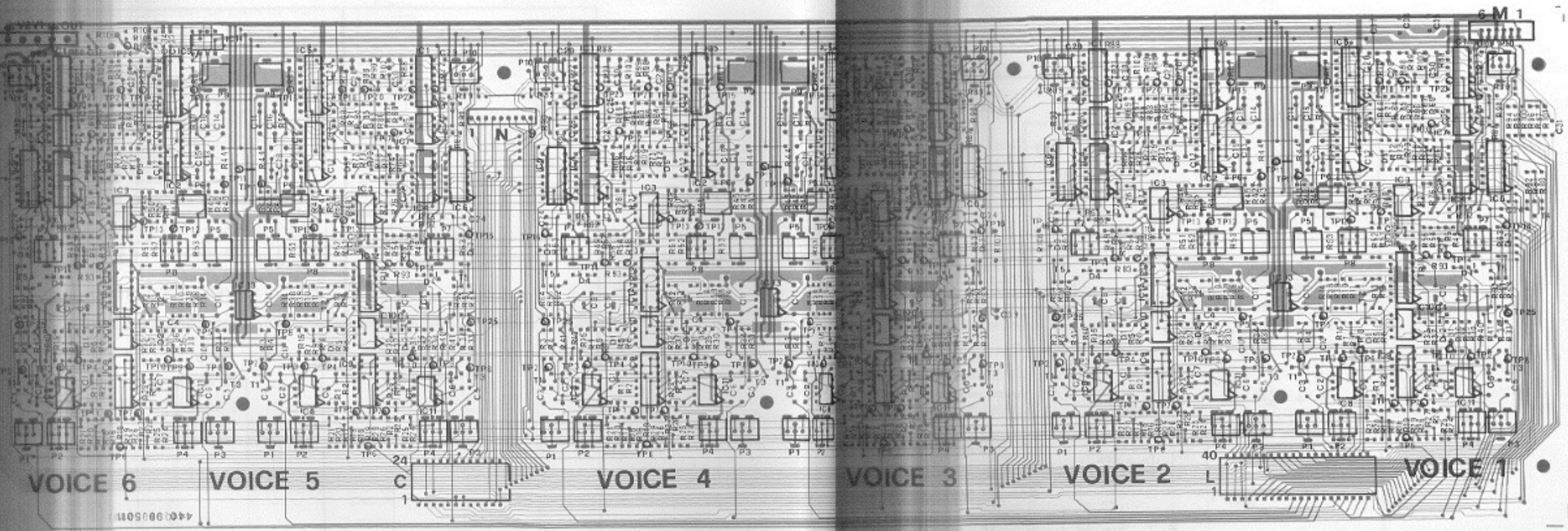


IC 1	SSM 2056	367.99.7018
IC 2	SSM 2044	367.99.7017
IC 3-7-11-14-8	TL 082	367.99.7009
IC 4-6-12	4016	367.99.6004
IC 5	SSM 2024	367.99.7019
IC 9	3046	367.99.7007
IC 10	LM393	367.99.7011

UPWARD ARROW INDICATES + 15 V

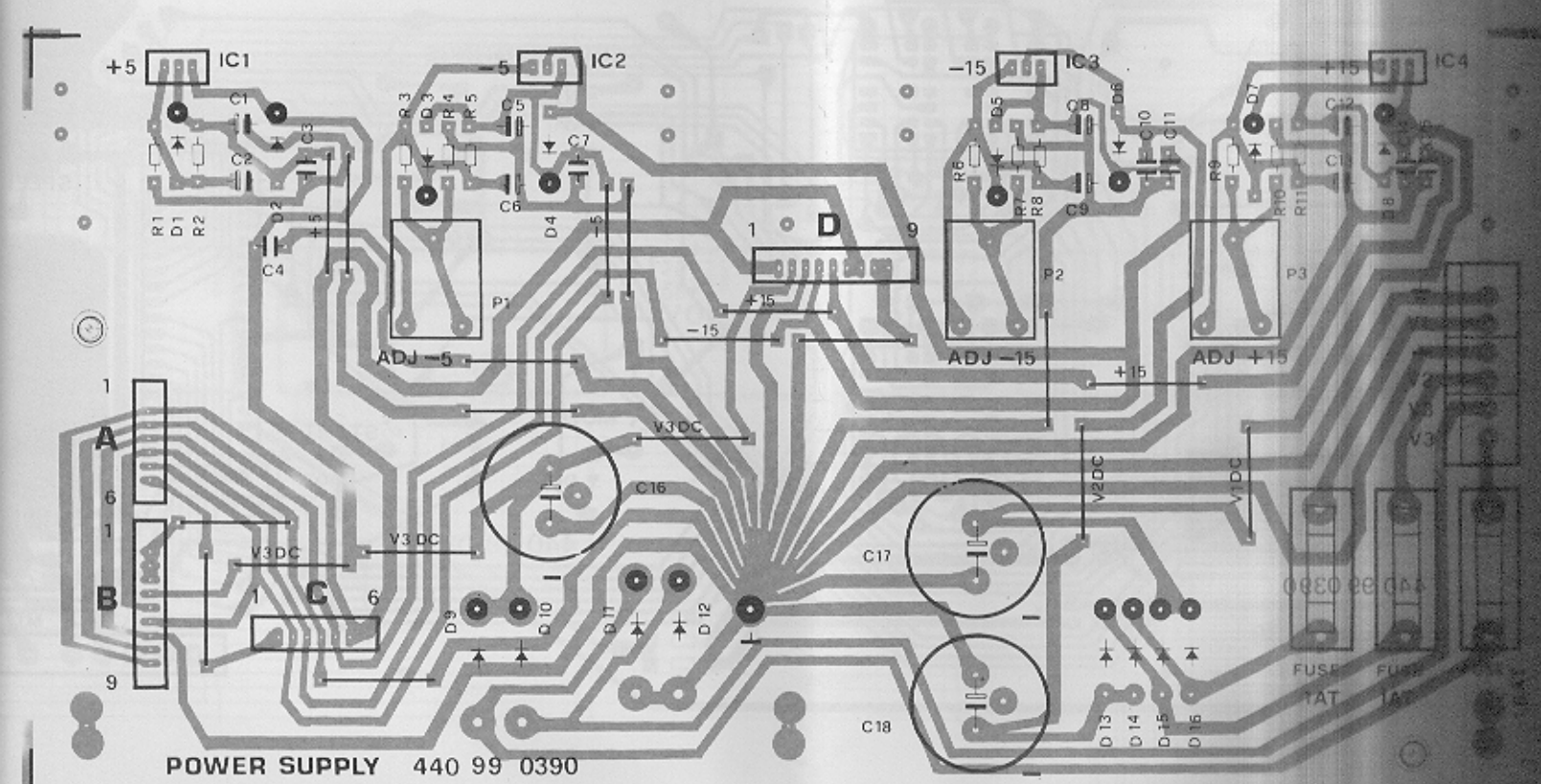
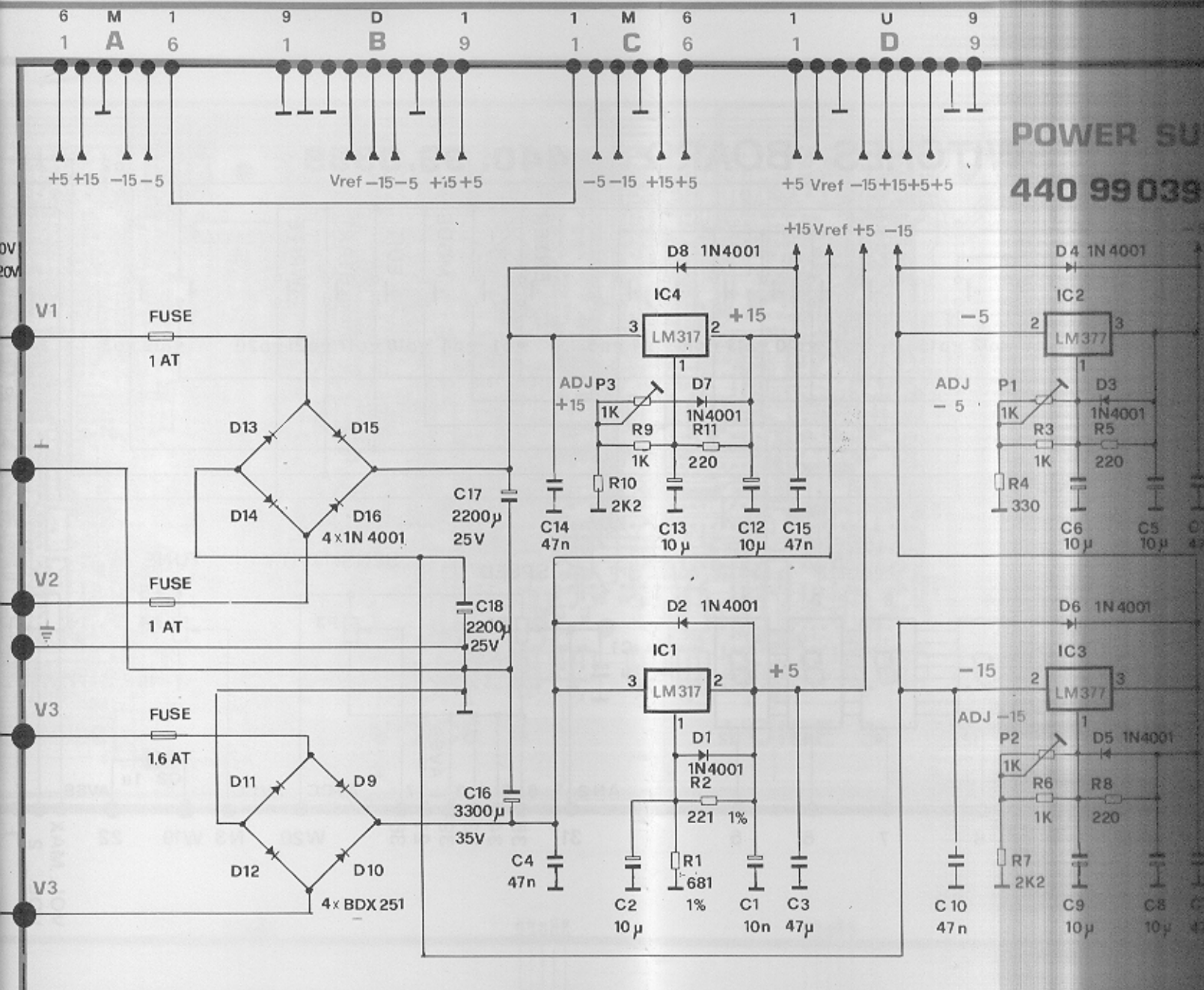
# VOICE 6







**POWER SUPPLY**  
**440 99039**

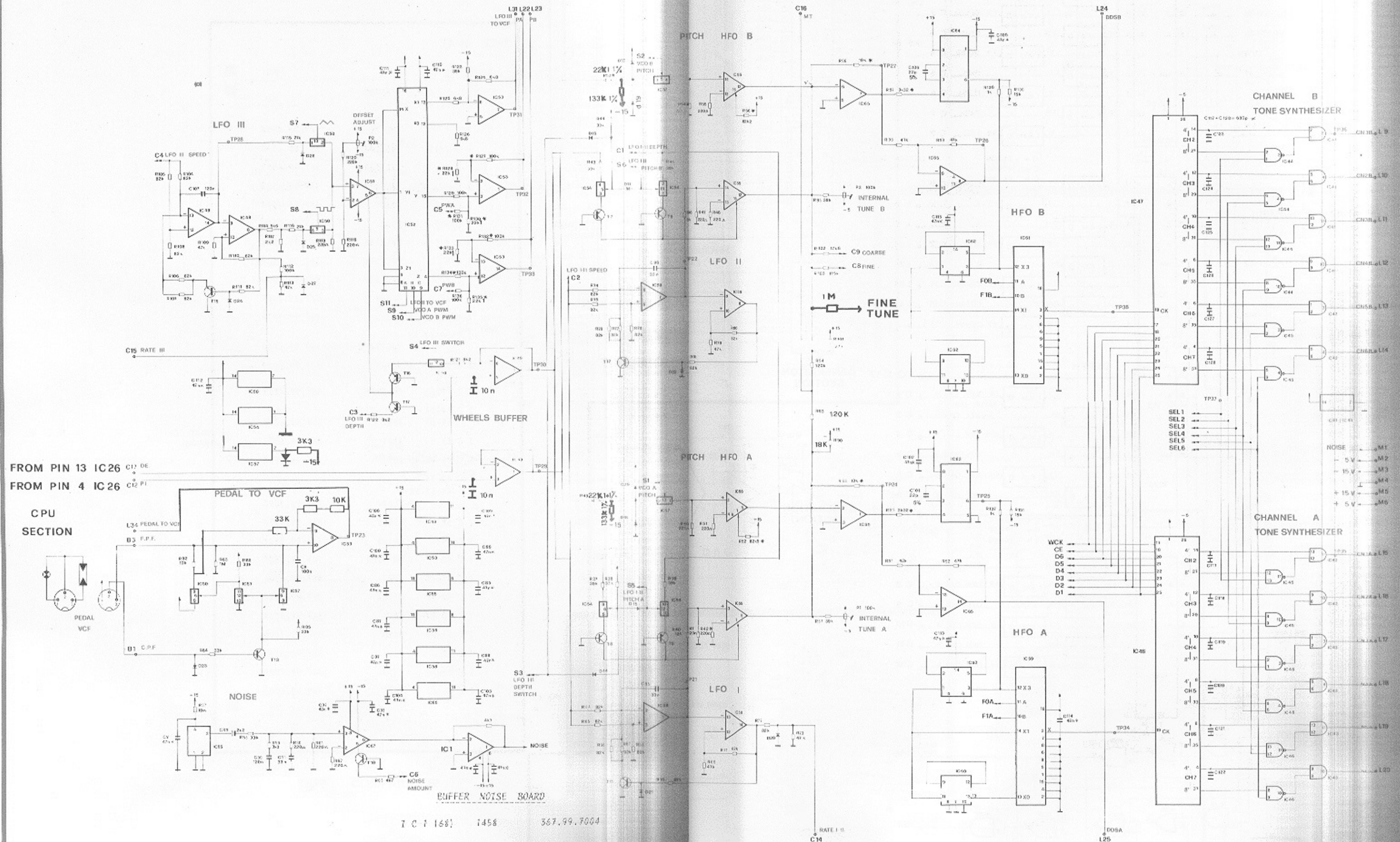


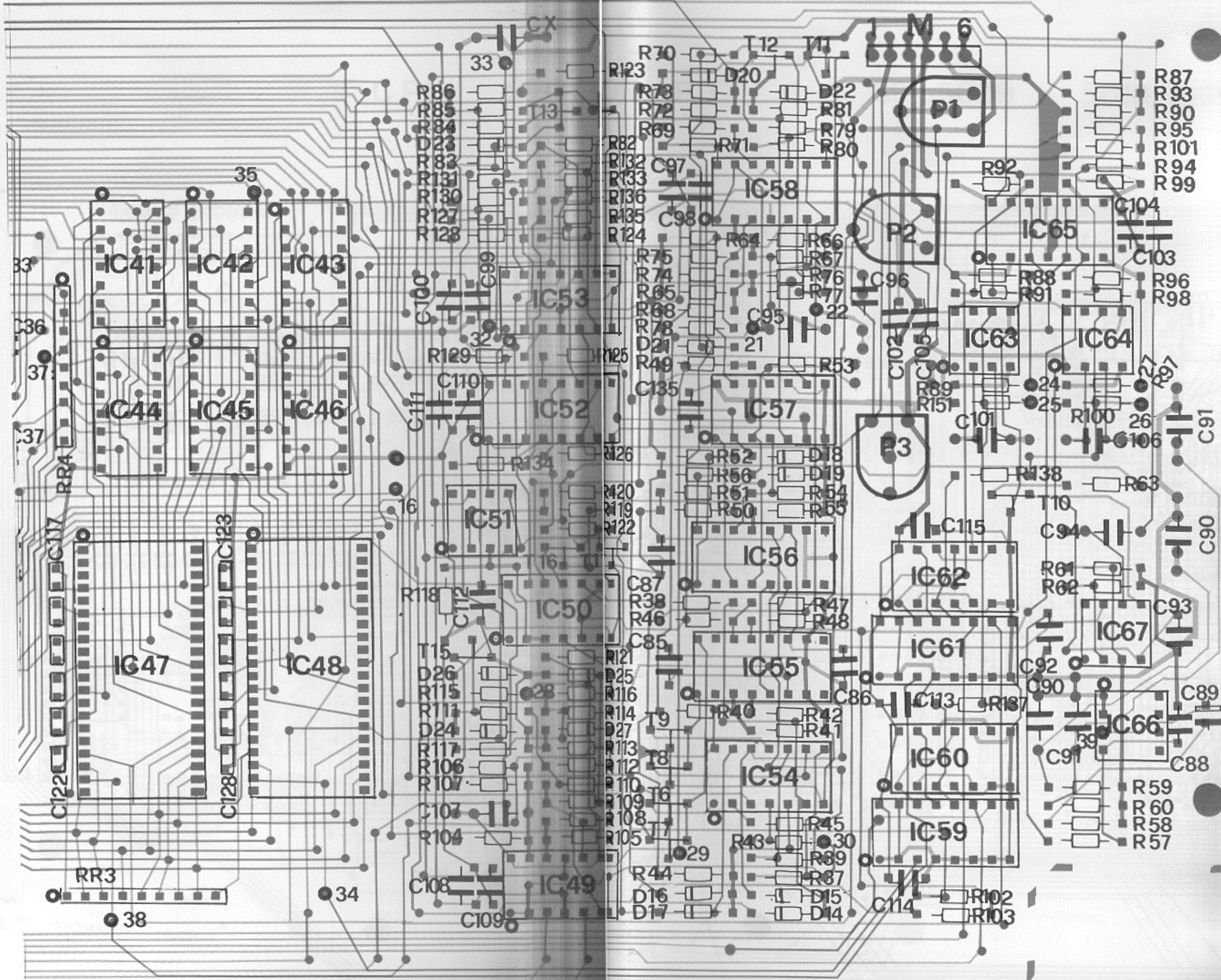
# GENERATION SECTION

## P.C. 440 99 5009 OR 5010

(RIGHT)

UPWARD ARROW INDICATES +5 V









# SWITCHES BOARD 440.99.0389

