

DK 80

MIDI DYNAMIC BITIMBRIC SYNTHESIZER

SIEL SpA RESERVES THE RIGHT TO IMPROVE AND ALTER,
WITHOUT PRIOR NOTICE,
THE FEATURES OF THE INSTRUMENT

UPDATED: FEBRUARY 1985

SIEL[®]

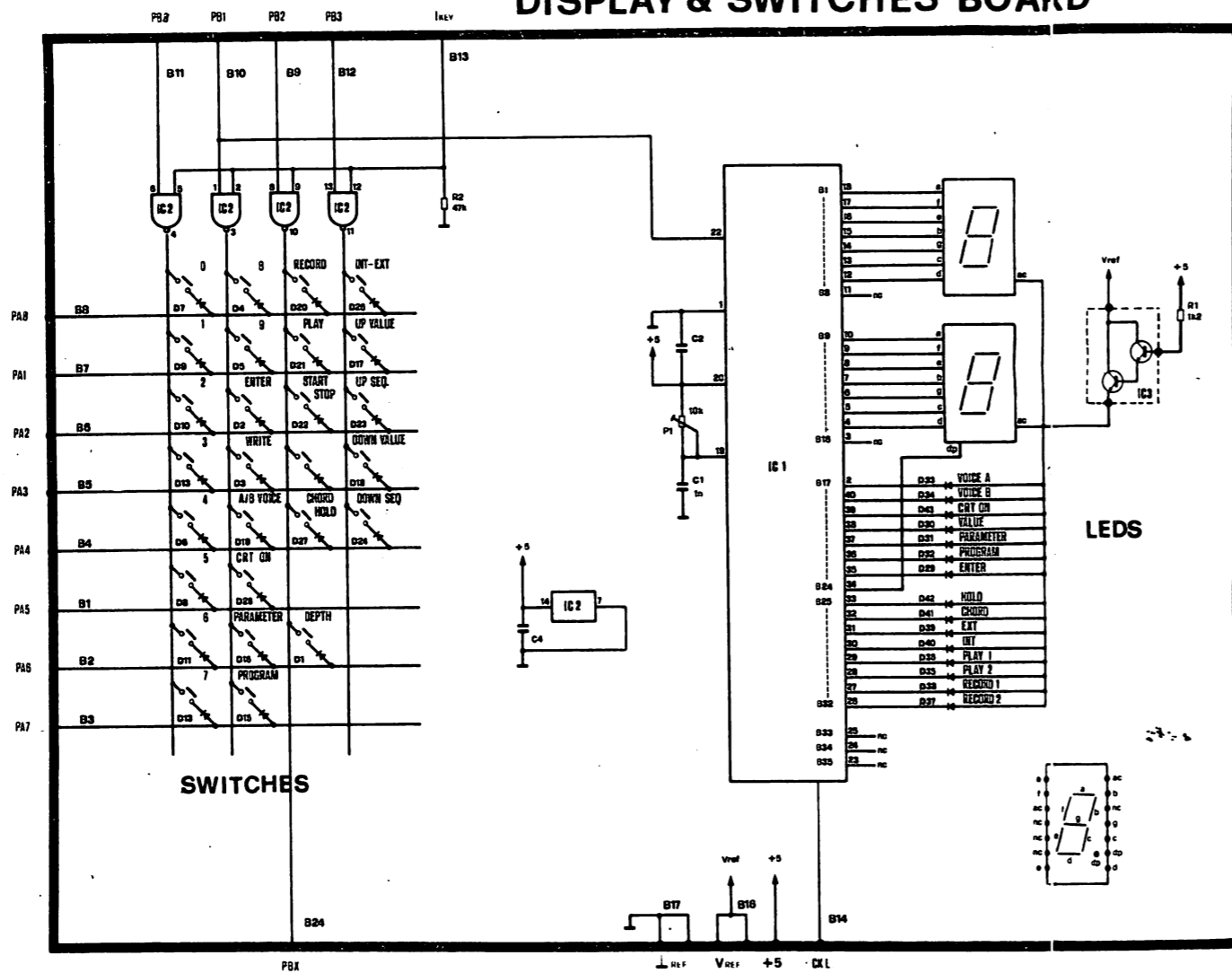
SOCIETÀ INDUSTRIE ELETTRONICHE s.p.a.

VIA L. DA VINCI n. 11 (Zona Ind.) - 63030 ACQUAVIVA PICENA (AP) ITALY
P.O. box 199 - 63039 SAN BENEDETTO DEL TRONTO (AP) ITALY
Tel. 0735/60744 (4 linee) - Telex 561887 SIEL I
Codice Fiscale e Partita I.V.A. 00092010677
Posizione meccanografica M/790532

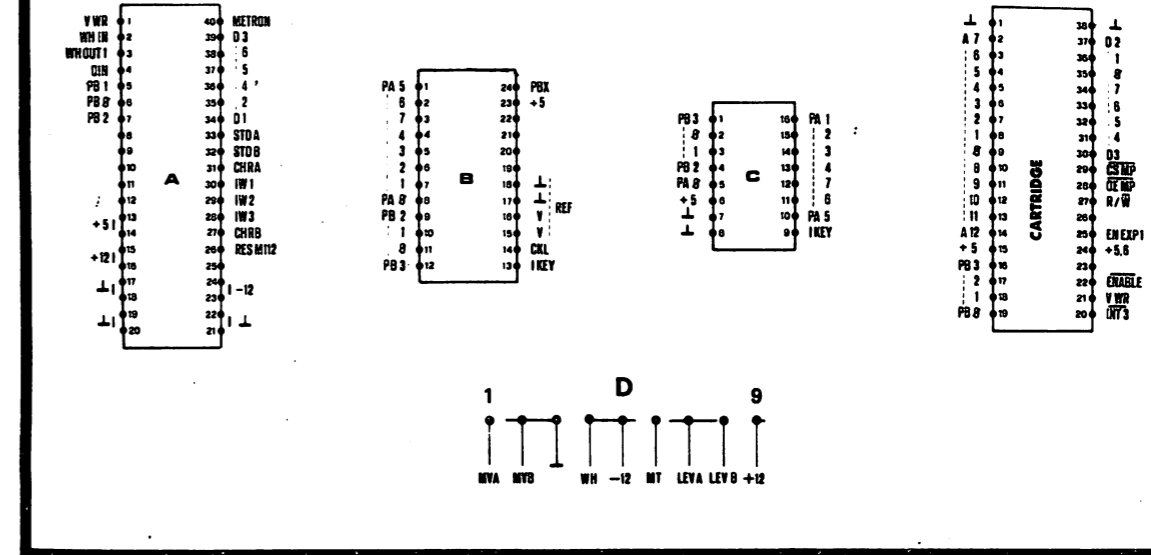
SCHEMATIC
DIAGRAM

SIEL[®]

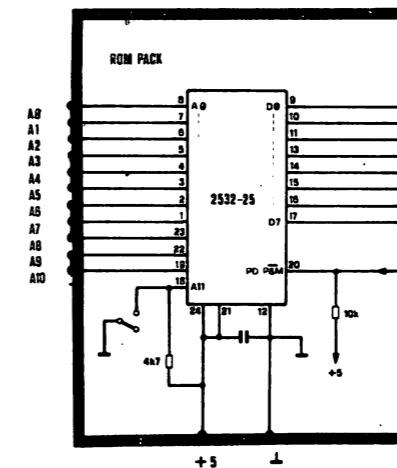
DISPLAY & SWITCHES BOARD



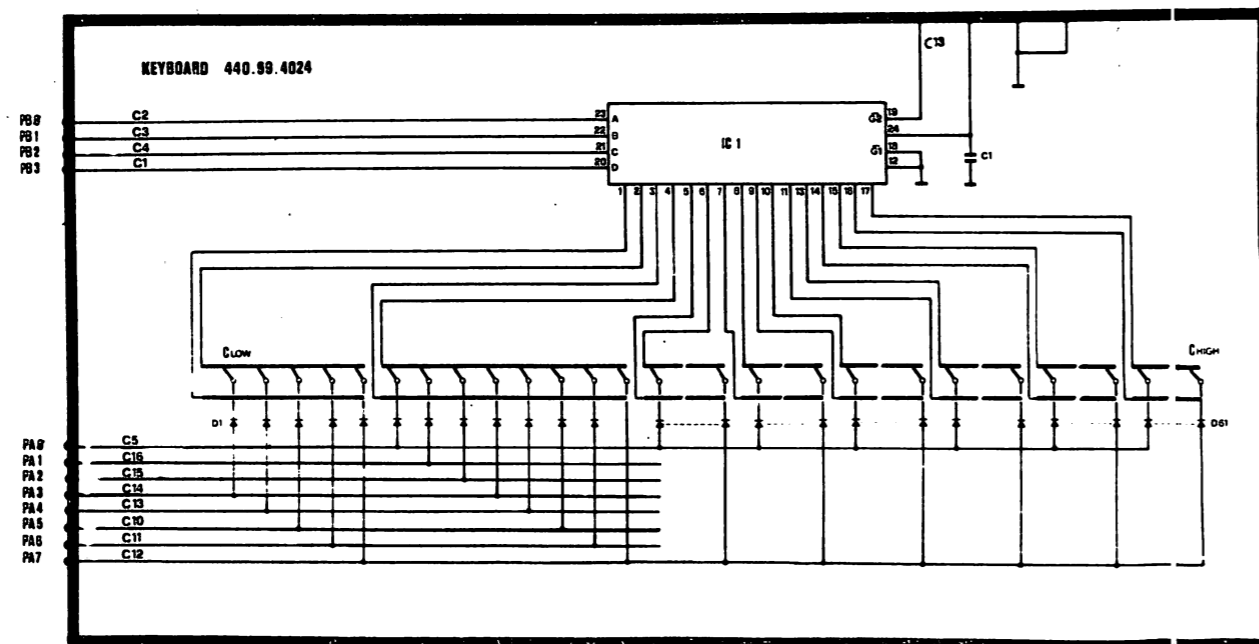
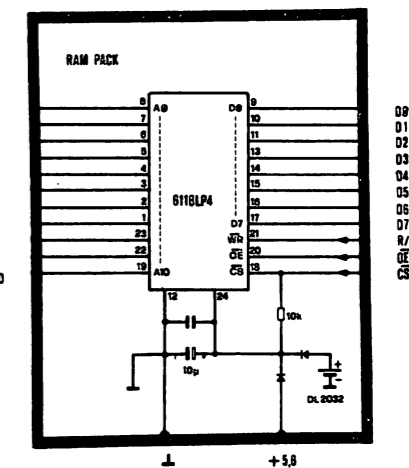
CONNECTIONS



ROM PACK

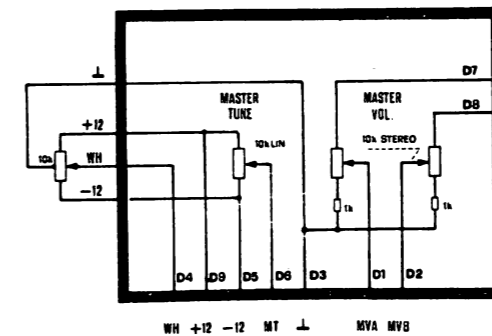


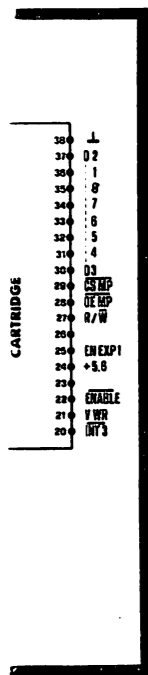
RAM PACK



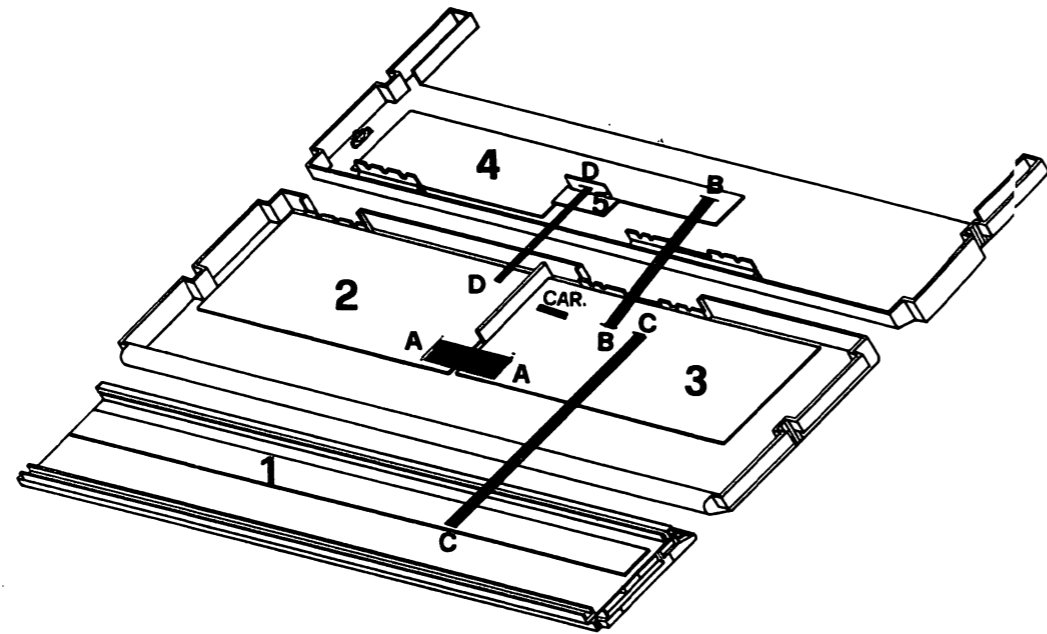
KEY BOARD

CONTROLS BOARD





D



- | | |
|-----------------------------|-------------|
| 1. KEYBOARD | 440 99 4024 |
| 2. GENERATION BOARD | 440 99 4023 |
| 3. CPU BOARD | 440 99 4022 |
| 4. DISPLAY & SWITCHES BOARD | 440 99 0339 |
| 5. CONTROLS BOARD | 440 99 0338 |



**P.C. 440.99.4022
CPU BOARD**

- I.C.1 - 6N138
- I.C.2 - 7404
- I.C.3 - 4016
- I.C.4 - TL 084
- I.C.5 - DAC 831
- I.C.6 - TMS 7000
- I.C.7 - 61121P-4
- I.C.8 - 74HC00
- I.C.9 - 2564-35
- I.C.10- 68B50
- I.C.11- 2532-30
- I.C.12- 74HC138
- I.C.13- 74HC377
- I.C.14- 74HC377
- I.C.15- 74HC373
- I.C.16- 4016
- I.C.17- 74HC32
- LM 337
- LM 317
- LM 317

**P.C. 440.99.4023
GENERATION BOARD**

- I.C.1 - TL 084
- I.C.2 - TL 084
- I.C.3 - 4016
- I.C.4 - SSM 2045
- I.C.5 - TL 082
- I.C.6 - M 112
- I.C.7 - M 112
- I.C.8 - SSM 2045
- I.C.9 - TDA 1022
- I.C.10- LM 393
- I.C.11- TL 082
- I.C.12- 4070
- I.C.13- TL 082
- I.C.14- MM 5437N
- I.C.15- TL 082
- I.C.16- TL 084
- I.C.17- TL 084
- I.C.18- TL 082
- I.C.19- 4051
- I.C.20- TL 084
- I.C.21- TL 084
- I.C.22- 4051
- I.C.23- TL 084
- I.C.24- TL 084
- I.C.25- 4051
- I.C.26- SSM 2031
- I.C.27- TL 082
- I.C.28- SSM 2031

**P.C. 440.99.4024
KEYBOARD**

- I.C.1 - 74HC154

**P.C. 440.99.0339
DISPLAY & SWITCHES BOARD**

- I.C.1 - M5451
- I.C.2 - 4011
- I.C.3 - BDX 33
- Display man 4810 A

**P.C. 440.99.0340
RAM PACK**

- 6116 P4

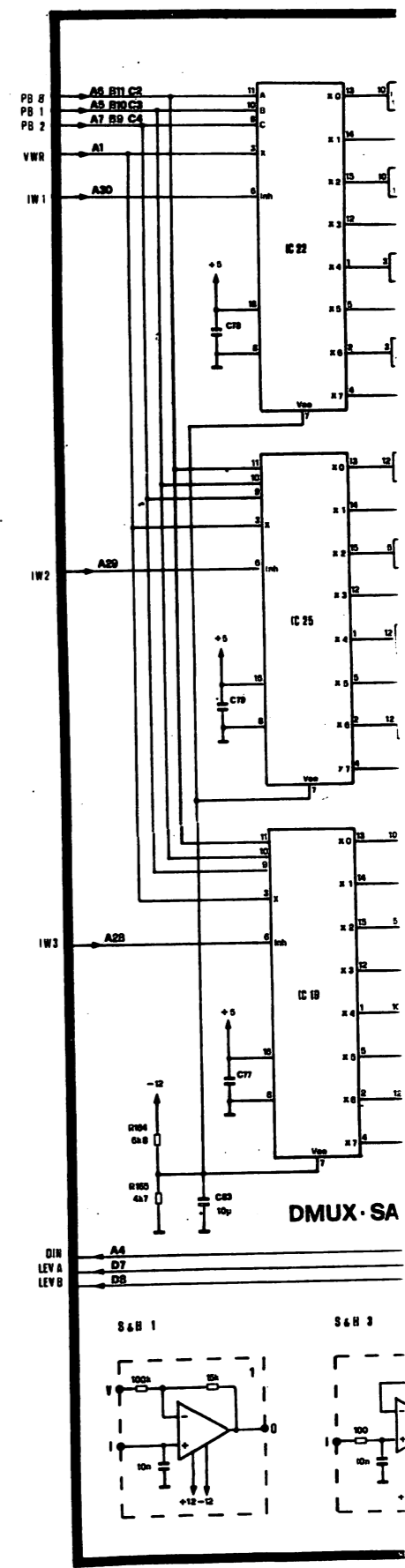
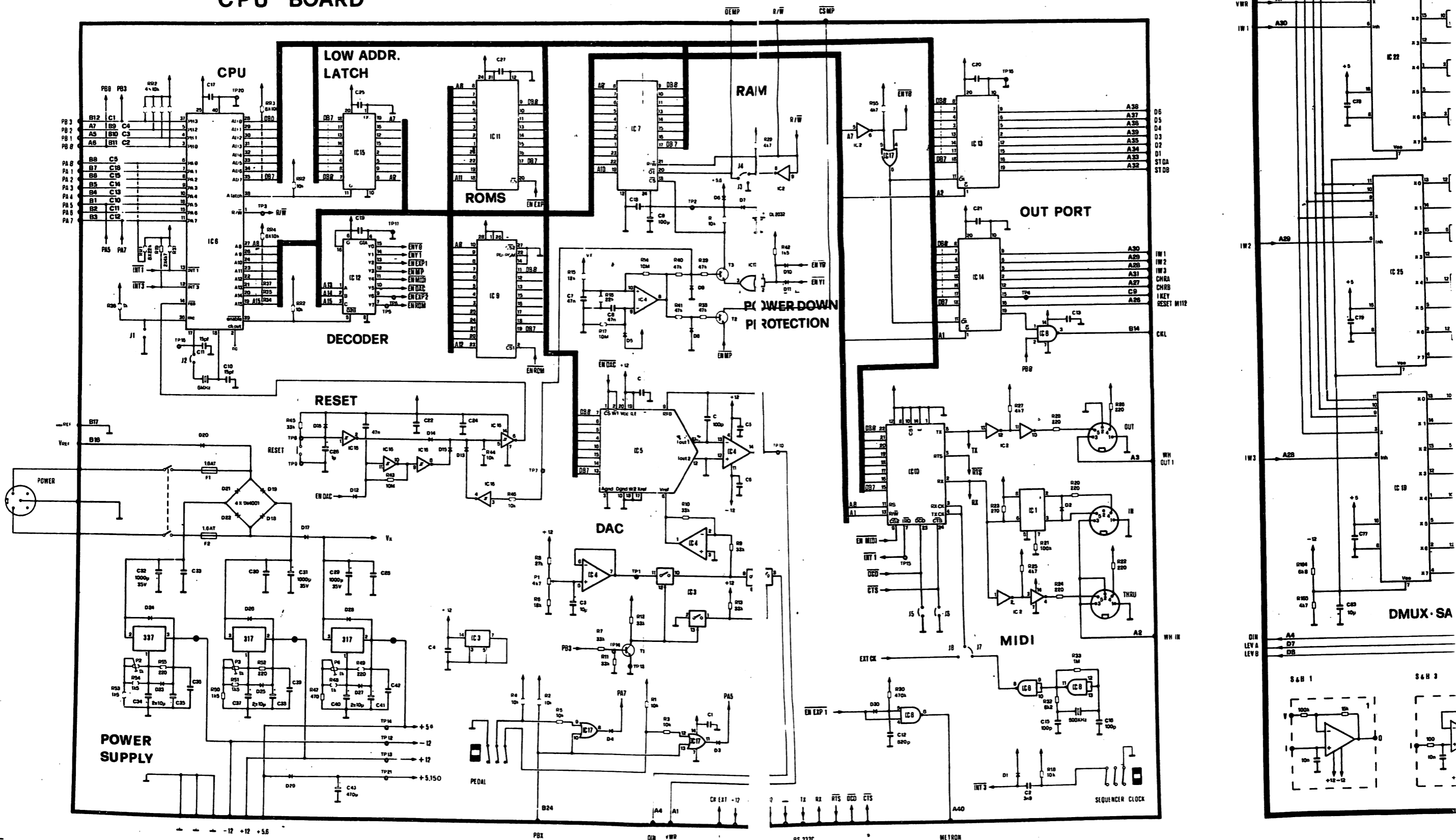
**P.C. 440.99.0342
ROM PACK**

- 2532-25

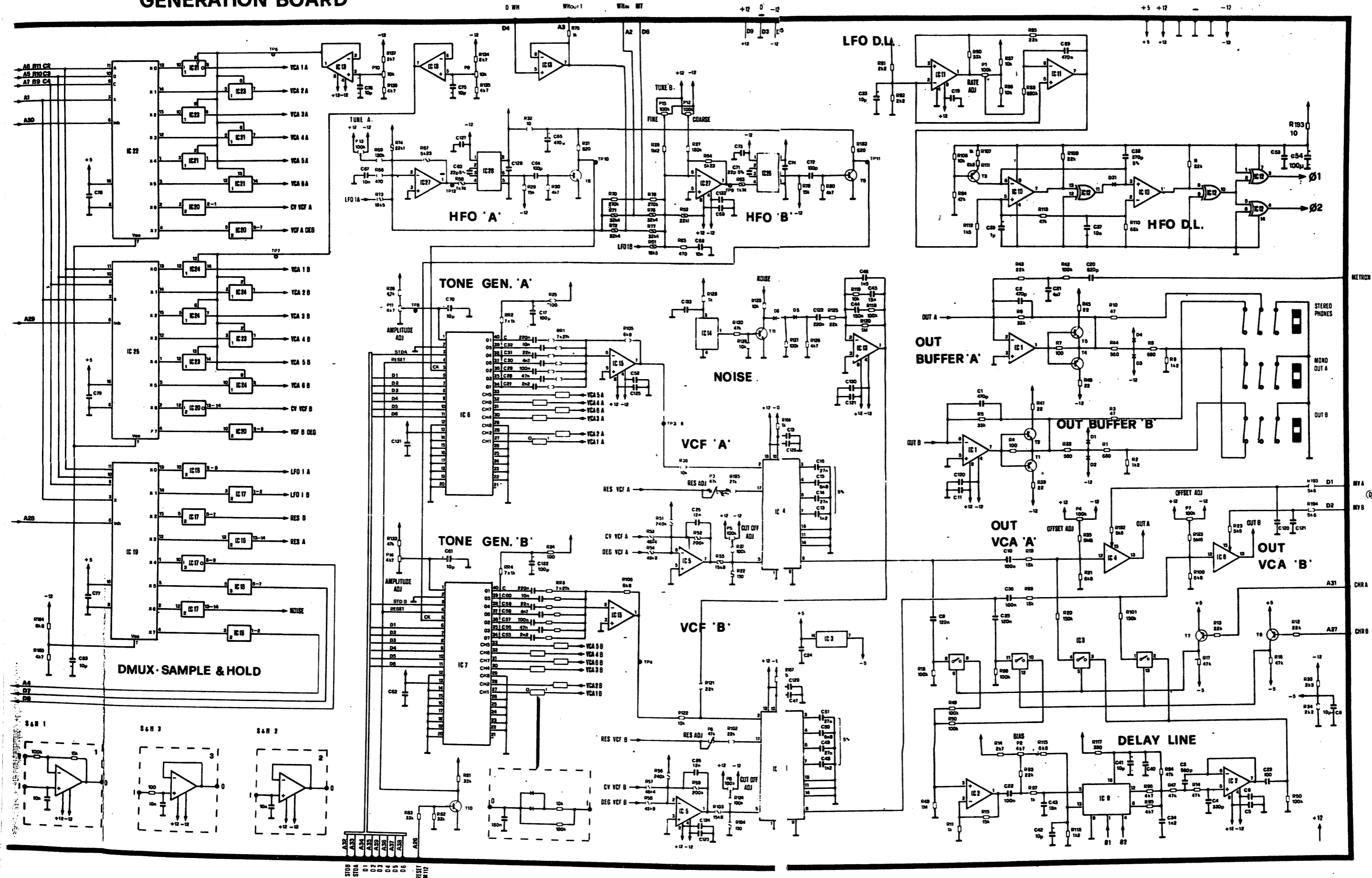
NOTES:

- All condensers without value specification are 47 n ceramic condensers.
- All resistors are 1/4 W.
- All resistors whose symbol is marked by an oblique stroke are 1% precision resistors.
- Upward arrows on CPU BOARD indicate a +5 voltage.
- Upward arrows on GENERATION BOARD indicate a +12 voltage. UNLESS OTHERWISE INDICATED

CPU BOARD

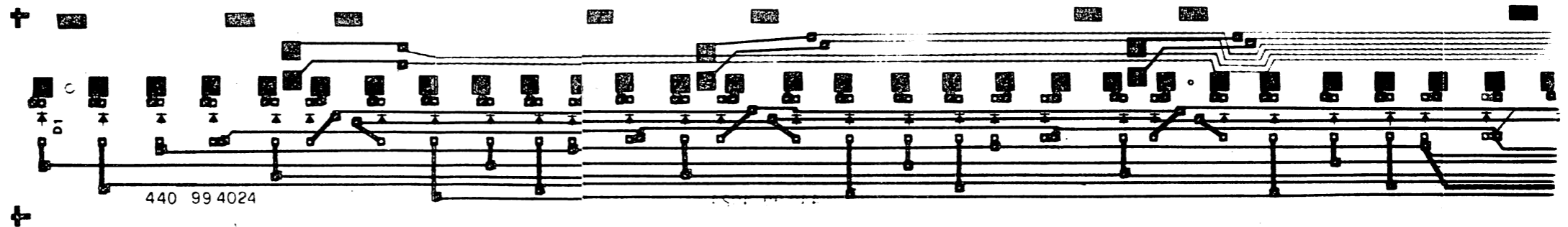
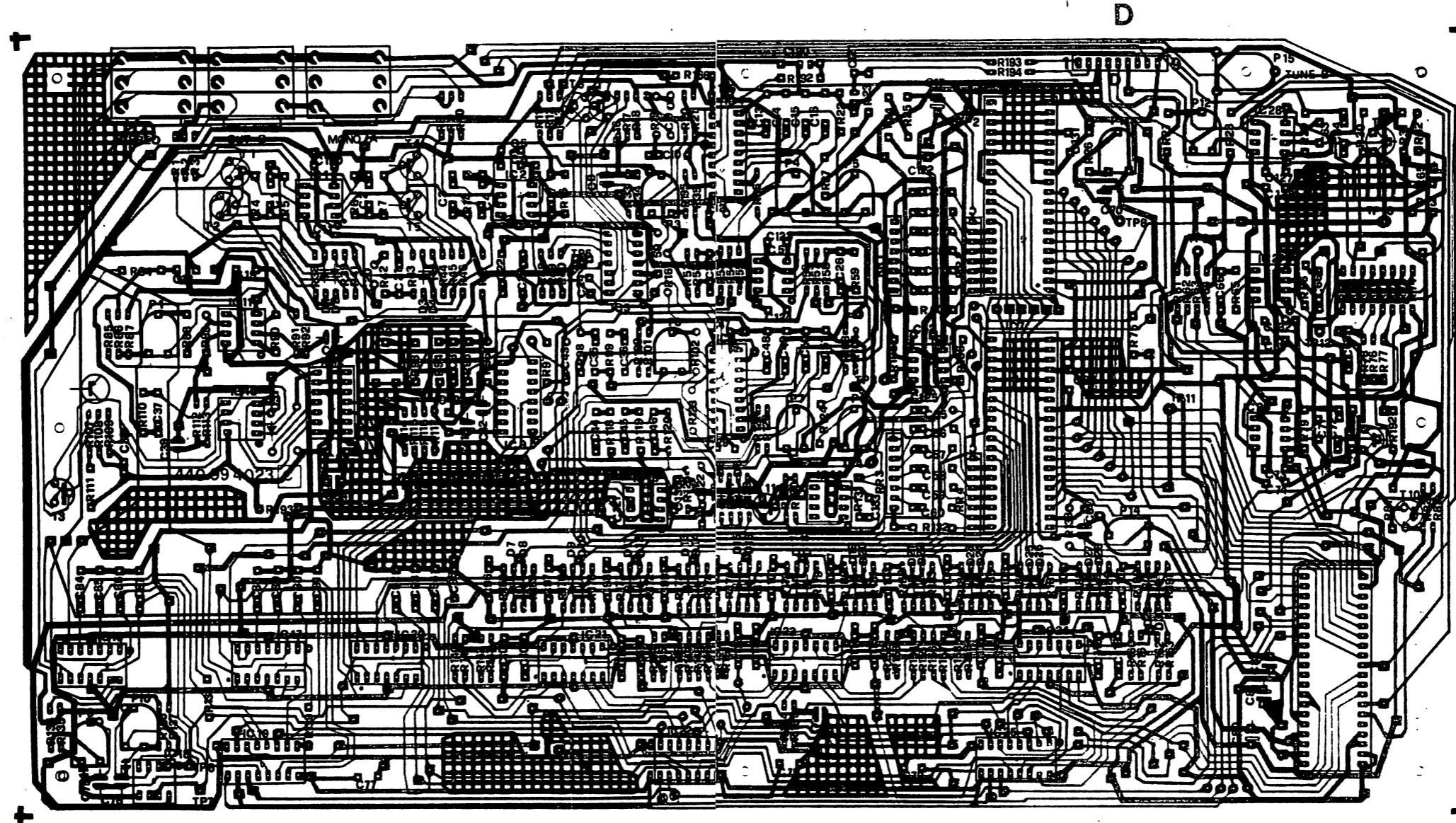


GENERATION BOARD



A32	A33	D1	D2	D3	D4	D5	D6
W1	W2	W3	W4	W5	W6	W7	W8

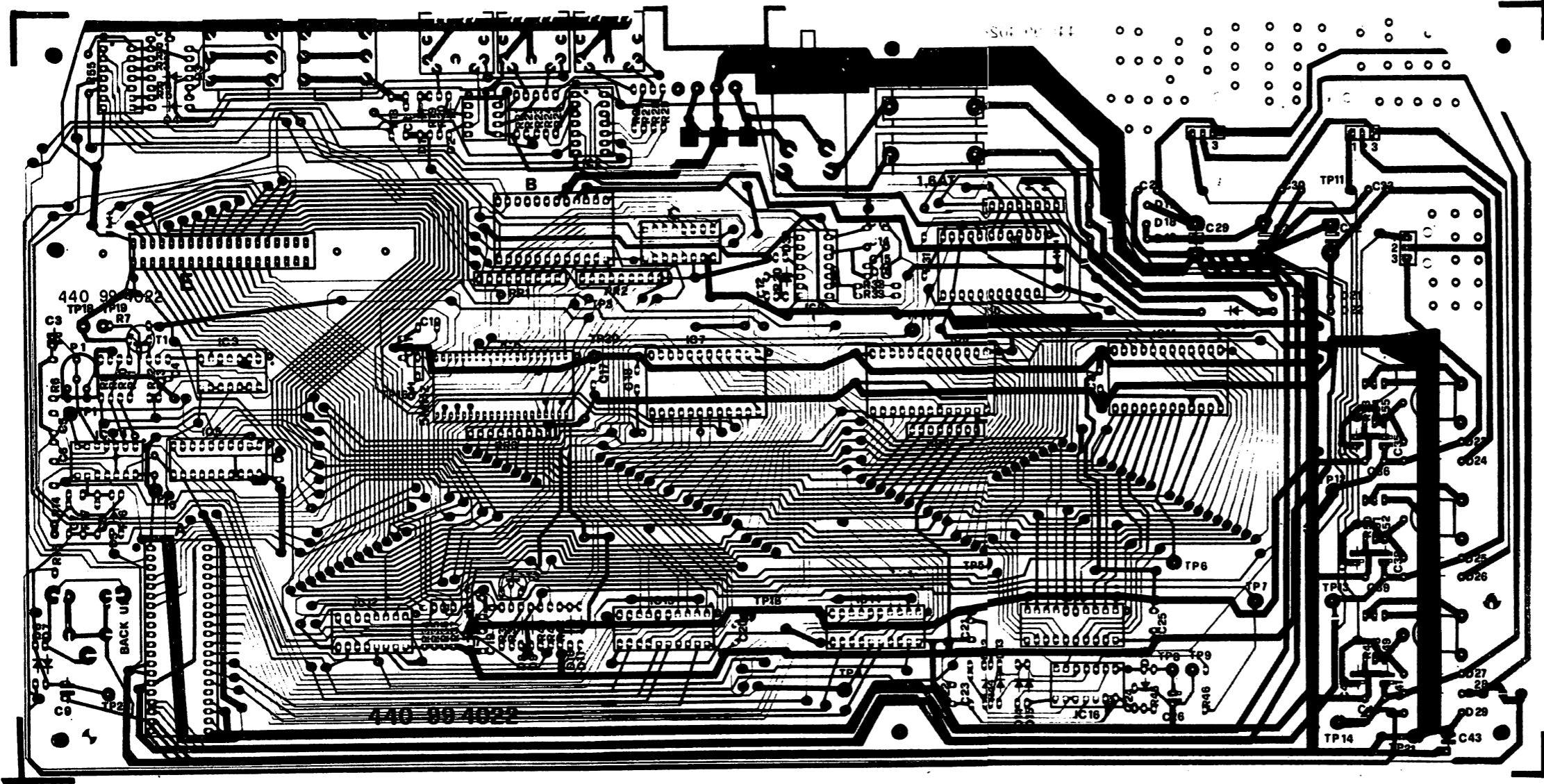
GENERATOR BOARD P.C. 440 99 4023 ASSY 590 06 0070



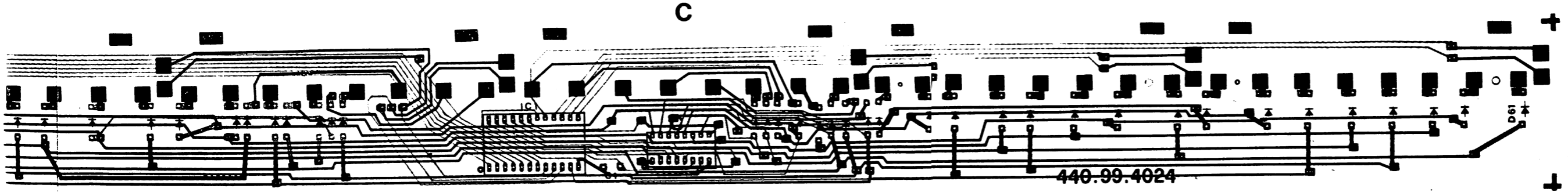
KEYBOARD P.C. 440 99 4024 ASSY 590 09 0038

B

CPU BOARD P.C. 440 99 4022 ASSY 590 06 0069



A



C

CONTROLS
BOARD

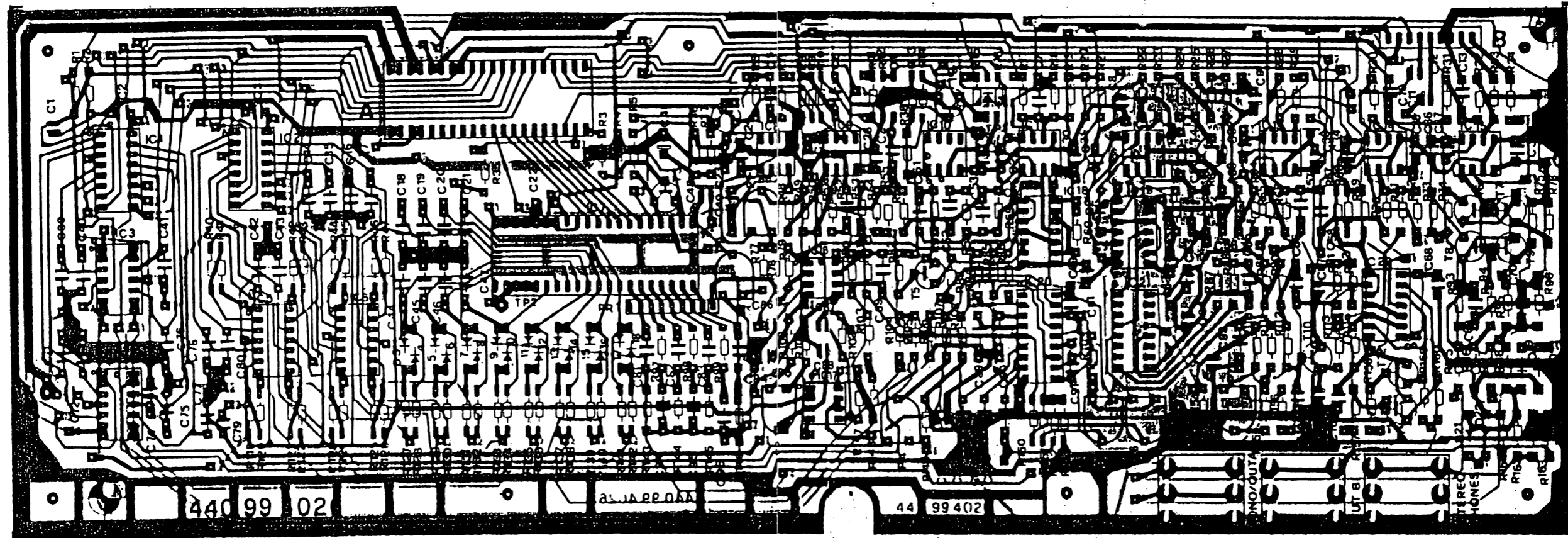
P.C. 440 99 0358
ASSY 590 05 0087



440 99 0 38

A

B



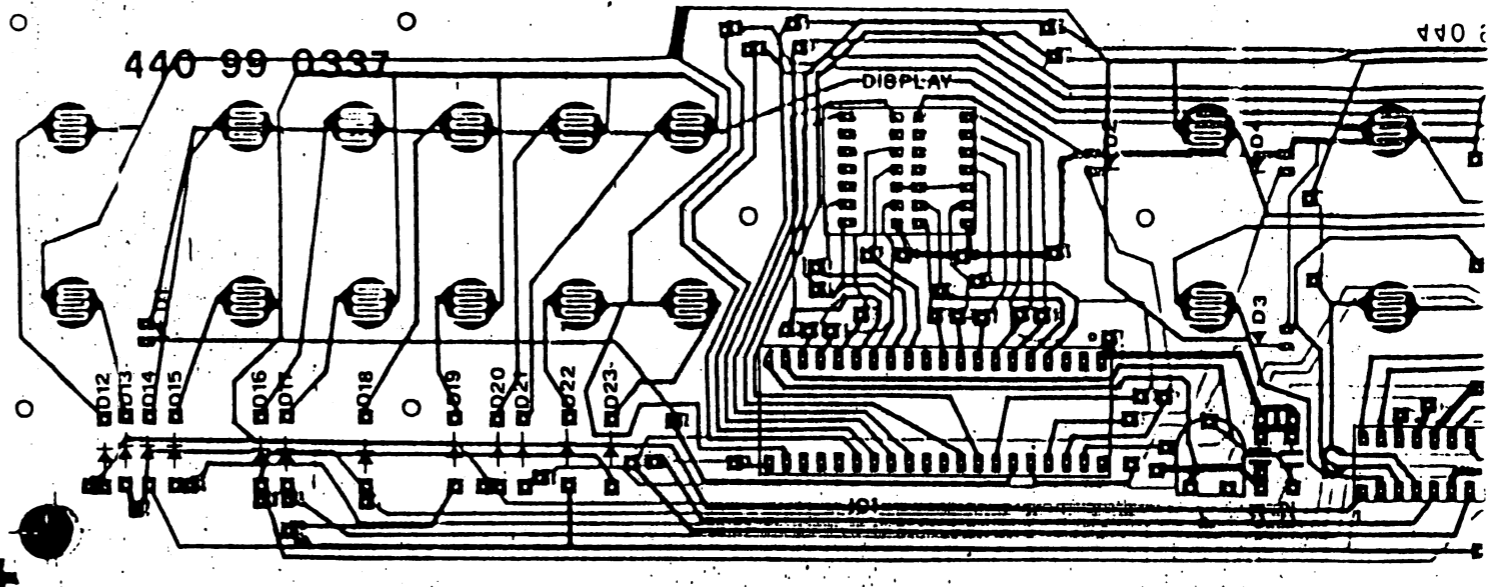
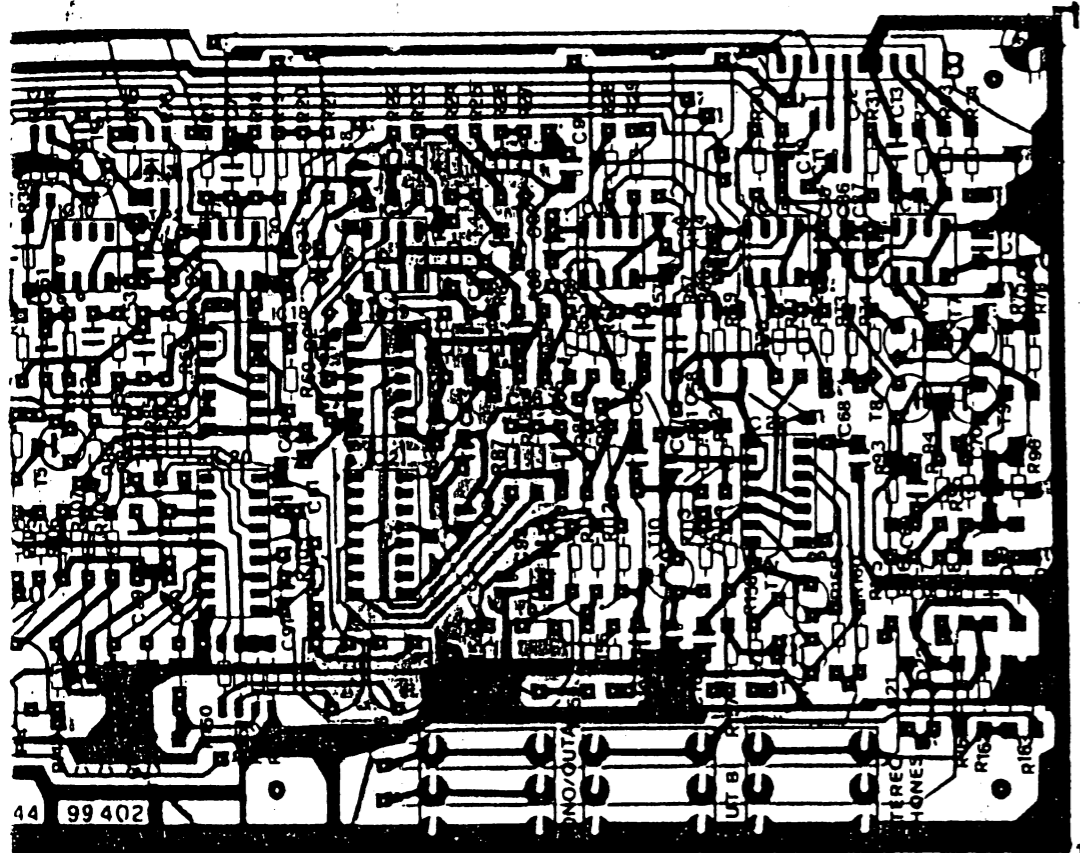
GENERATOR BOARD P.C. 440 99 402C ASSY 590 06 0076

CONTROLS
BOARD

PC 440 99 0358
ASSY 590 05 0087

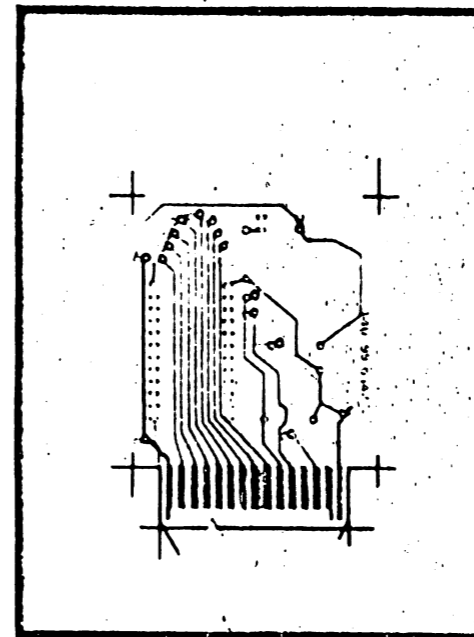


B



ROM PACK

P.C. 440 99 0342
ASSY 590 06 0071



EXPANDER 80

PROGRAMMABLE MIDI SYNTH MODULE

SIEL s.p.a. RESERVES THE RIGHT TO IMPROVE AND ALTER,
WITHOUT PRIOR NOTICE,
THE FEATURES OF THE INSTRUMENT

UPDATED: FEBRUARY 1985

SIEL[®]

SOCIETÀ INDUSTRIE ELETTRONICHE s.p.a.

VIA S. GIUSEPPE 11, 00144 ROMA, ITALIA
P.O. BOX 100, 00100 ROMA, ITALIA
Tel. 06/4974741 - Telex 320111 - Fax 06/4974742
Cassa Postale 1/A, 00100 ROMA, ITALIA
Prestare particolare attenzione al manuale

SCHEMATIC
DIAGRAM

SIEL[®]

IEL SpA RESERVES THE RIGHT TO IMPROVE AND ALTER,
WITHOUT PRIOR NOTICE,
THE FEATURES OF THE INSTRUMENT

UPDATED: FEBRUARY 1985



SOCIETÀ INDUSTRIE ELETTRONICHE s.p.a.

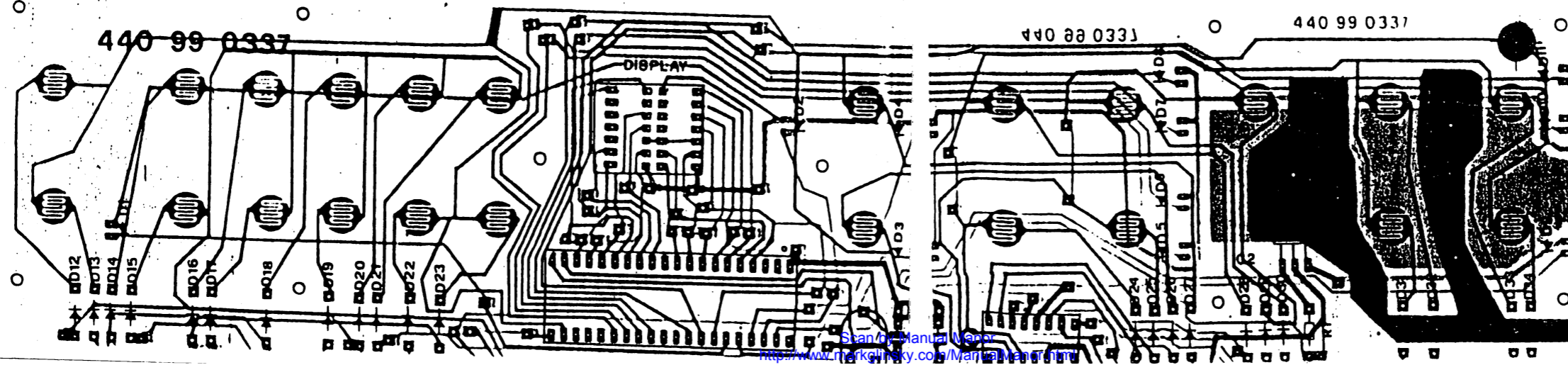
VIA L. DA VINCI n. 11 (Zone Ind.) - 63030 ACQUAVIVA PICENA (AP) ITALY
P.O. box 199 - 63030 SAN BENEDETTO DEL TRONTO (AP) ITALY
Tel. 0735/80744 (4 linee) - Telex 941887 SIEL I
Codice Fiscale e Partita IVA 00092010677
Posizione meccanografica M/790532

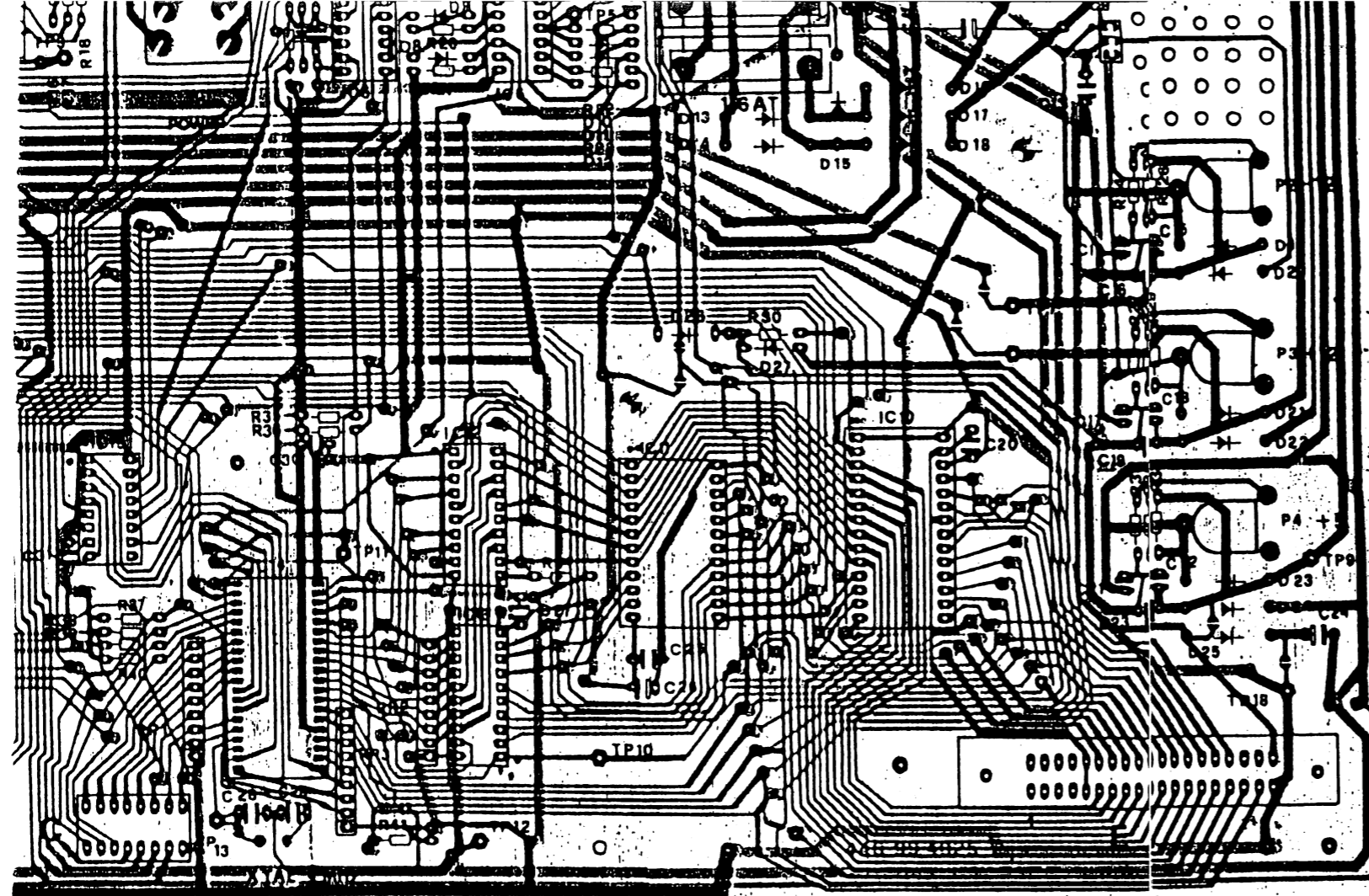
SCHEMATIC DIAGRAM



DISPLAY & SWITCHES BOARD

PC. 440 99 0337
ASSY 590 05 0075





SIEL s.p.a. RESERVES THE RIGHT TO IMPROVE AND ALTER,
WITHOUT PRIOR NOTICE,
THE FEATURES OF THE INSTRUMENT

UPDATED: FEBRUARY 1985



SOCIETÀ INDUSTRIE ELETTRONICHE s.p.a.

VIA L. DA VINCI n. 11 (Zona Ind.) - 63030 ACQUAVIVA PICENA (AP) ITALY
P.O. box 199 - 63039 SAN BENEDETTO DEL TRONTO (AP) ITALY
Tel. 0735/60744 (4 linee) - Telex 961887 SIEL I
Codice Fiscale e Partita I.V.A. 00092010877
Posizione meccanografica M790532

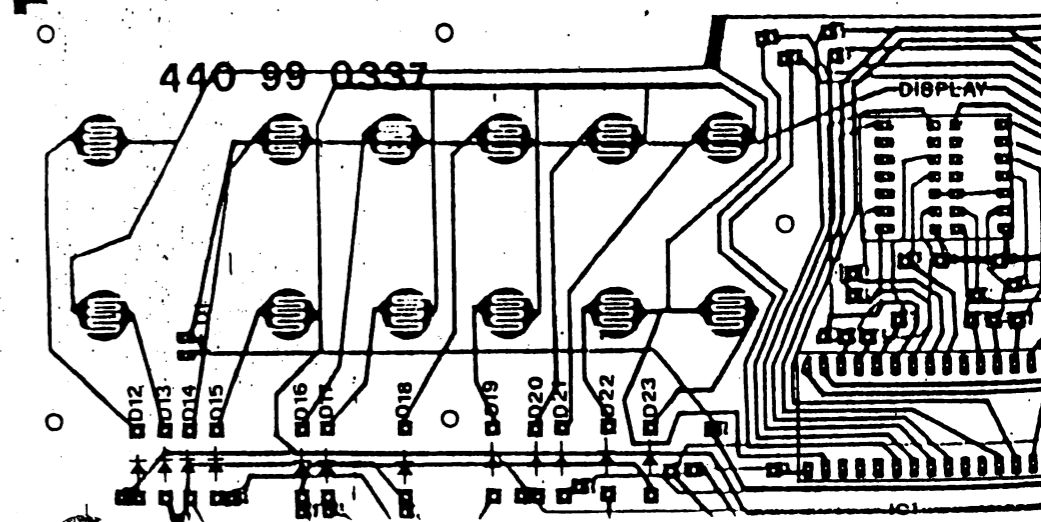
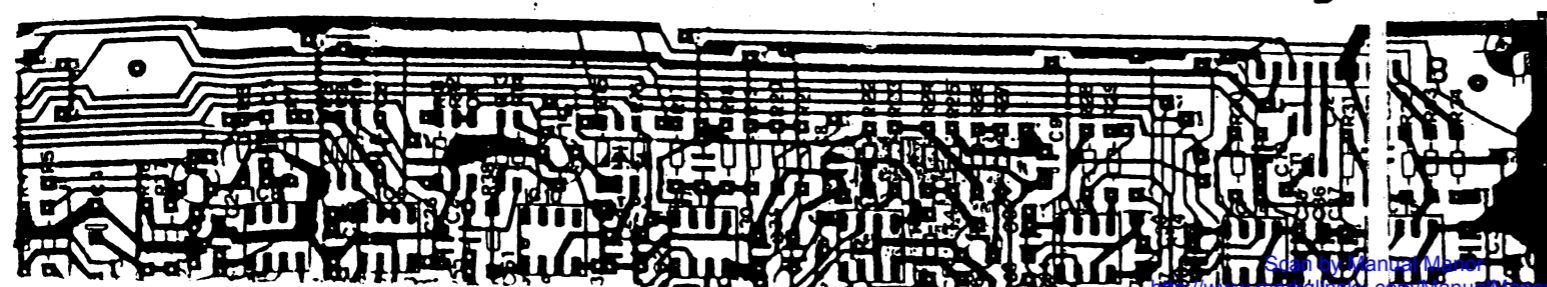
CONTROLS
BOARD

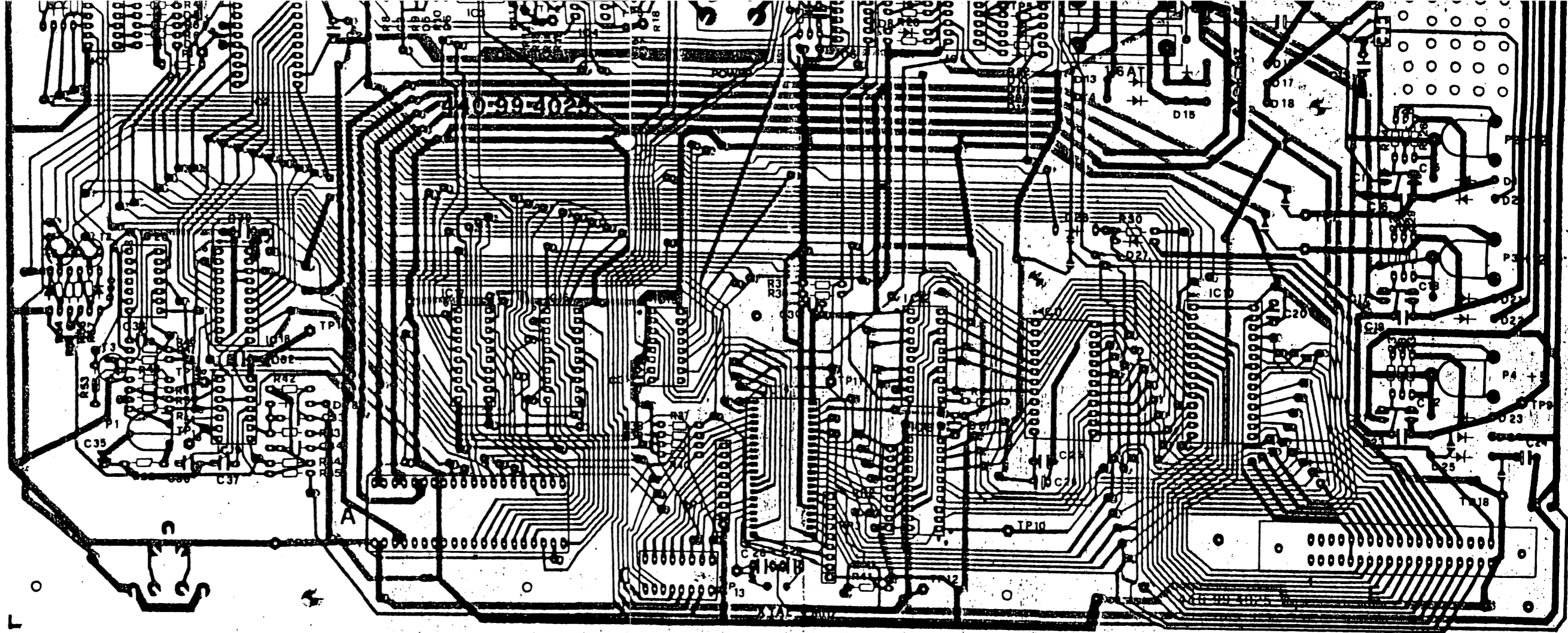
P.C. 440 99 0358
ASSY 590 05 0087



440 99 0.38

B

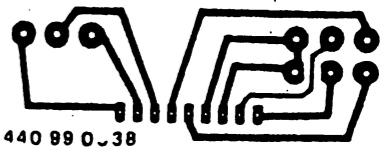




A C

CONTROLS BOARD

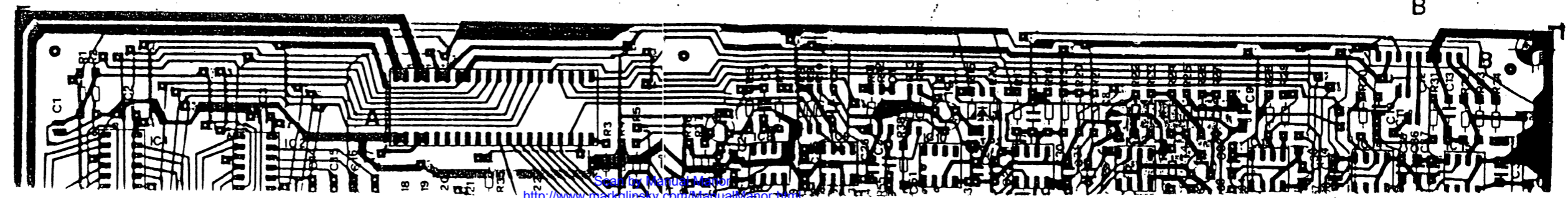
PC 440 99 0358
ASSY 590 05 0087



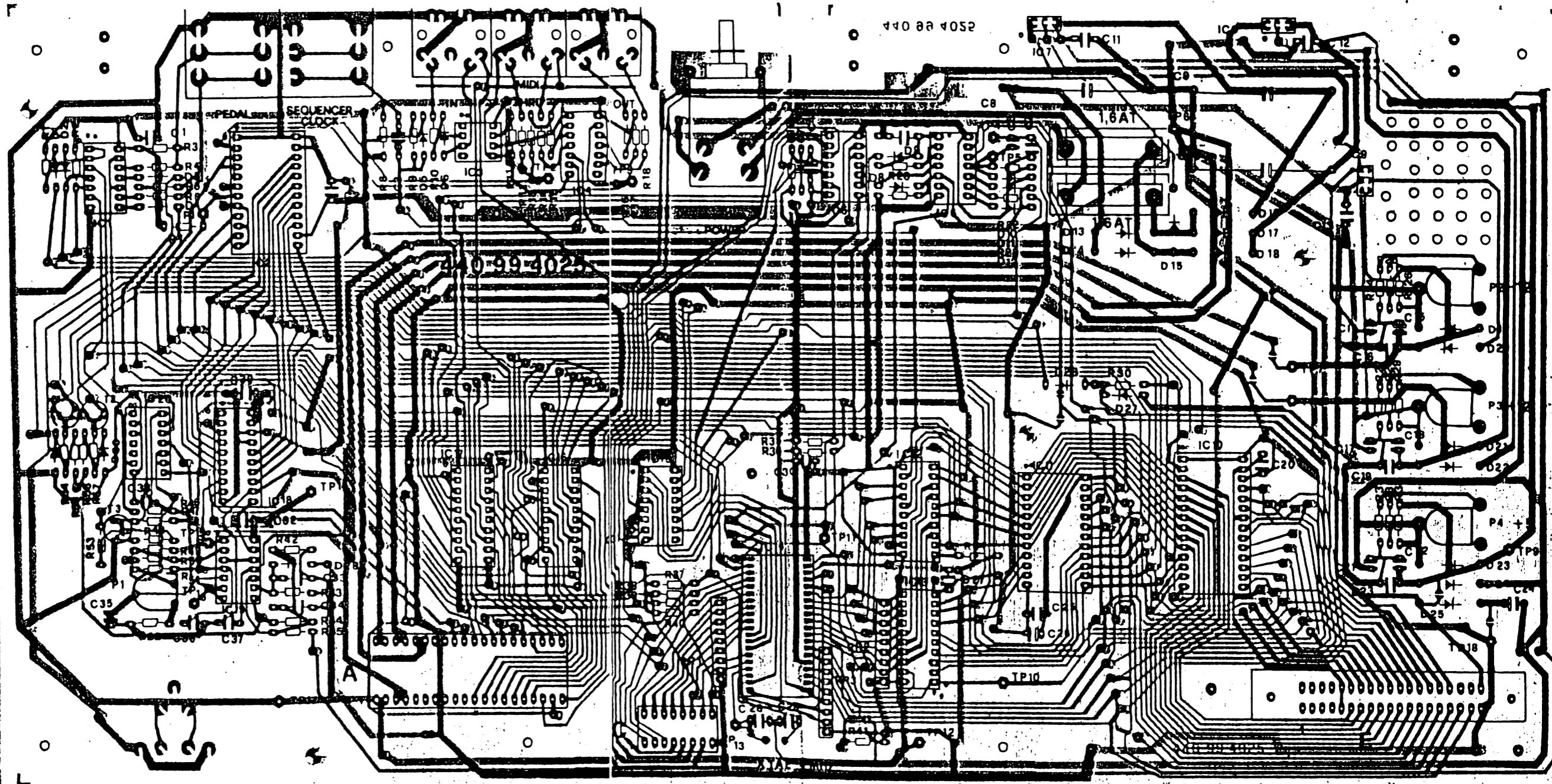
440 99 0.38

A

B

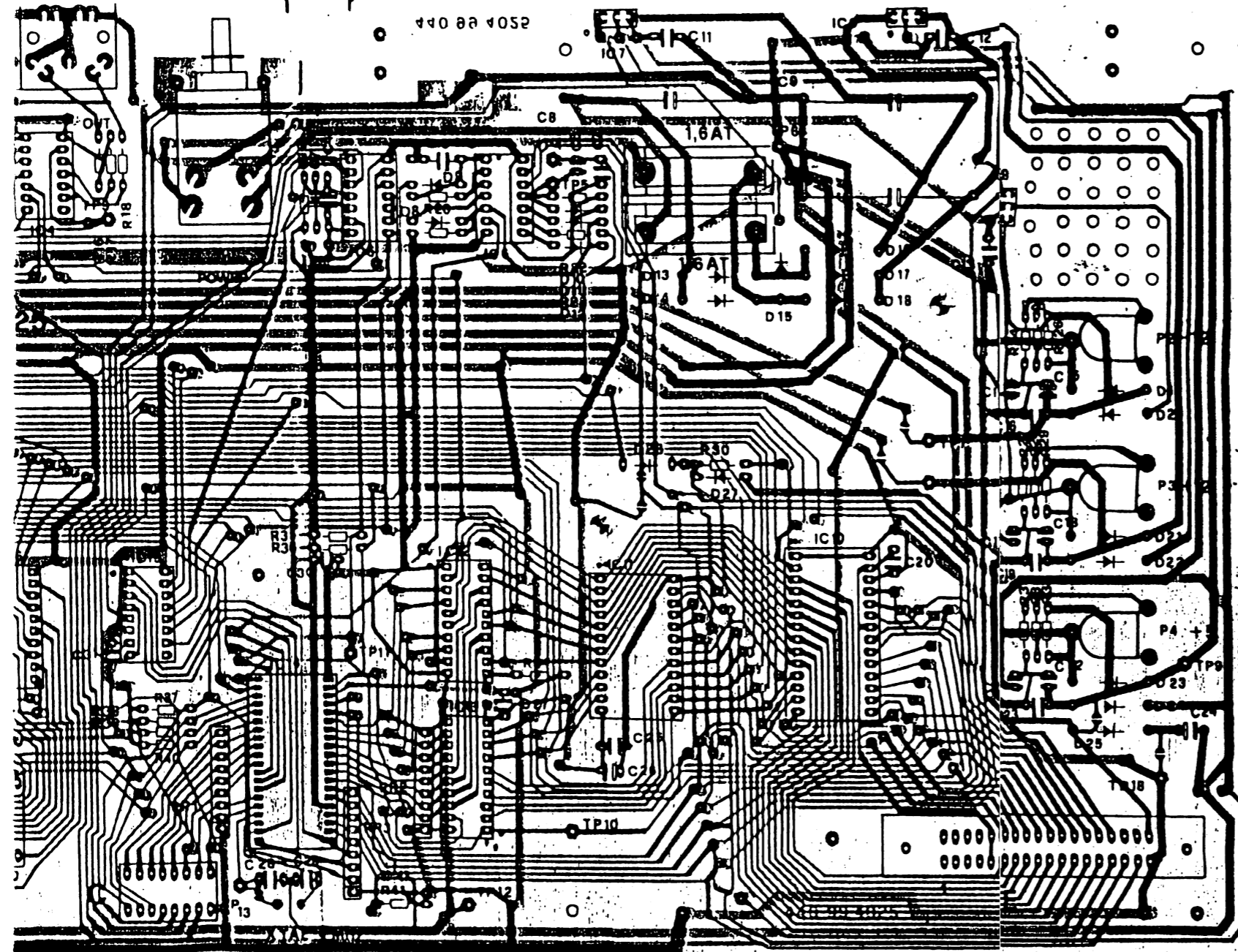


CPU BOARD P.C. 440 99 4025 ASSY 590 01 0075



A C

SSY 590 00 0075



SIEL s.p.a. RESERVES THE RIGHT TO IMPROVE AND ALTER,
WITHOUT PRIOR NOTICE,
THE FEATURES OF THE INSTRUMENT

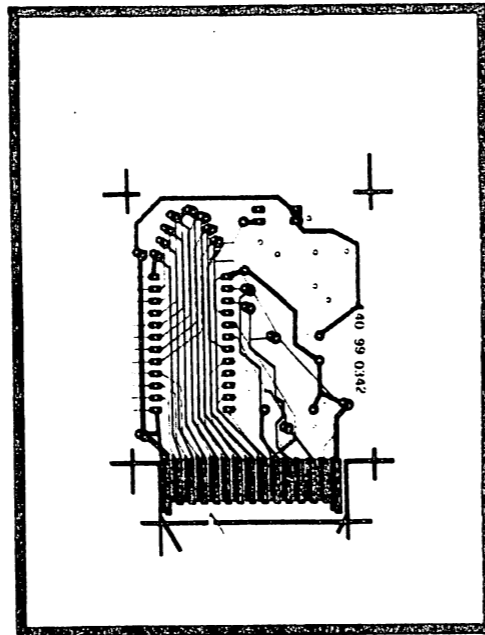
UPDATED: FEBRUARY 1985

SIEL® SOCIETÀ INDUSTRIE ELETTRONICHE s.p.a.

VIA L. DA VINCI n. 11 (Zona Ind) - 63030 ACQUAVIVA PICENA (AP) ITALY
P.D. box 199 - 63039 SAN BENEDETTO DEL TRONTO (AP) ITALY
Tel. 0735/80744 (4 linee) - Telex 361881 - SIEL I
Codice Fiscale e Partita IVA 00092010677
Posizione meccanografica M/790532

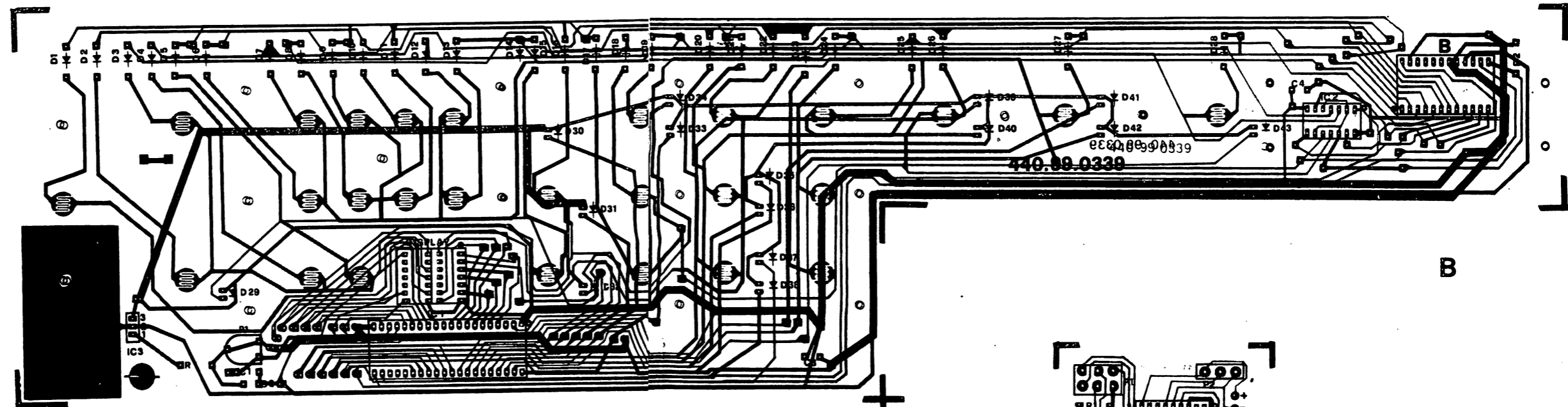
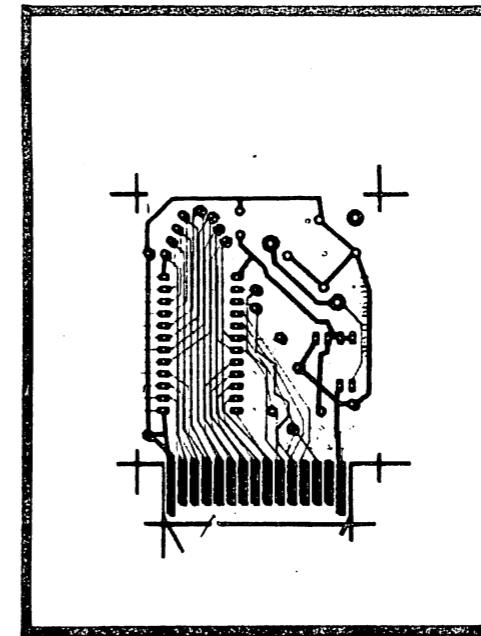
ROM PACK

P.C. 440 99 0342
ASSY590 06 0071



RAM PACK

P.C. 440 99 0340
ASSY 590 06 0085

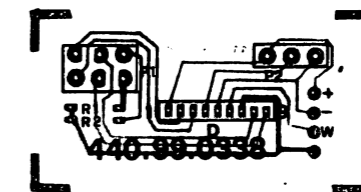


DISPLAY & SWITCHES BOARD

P.C. 440 99 0339
ASSY 590 05 0074

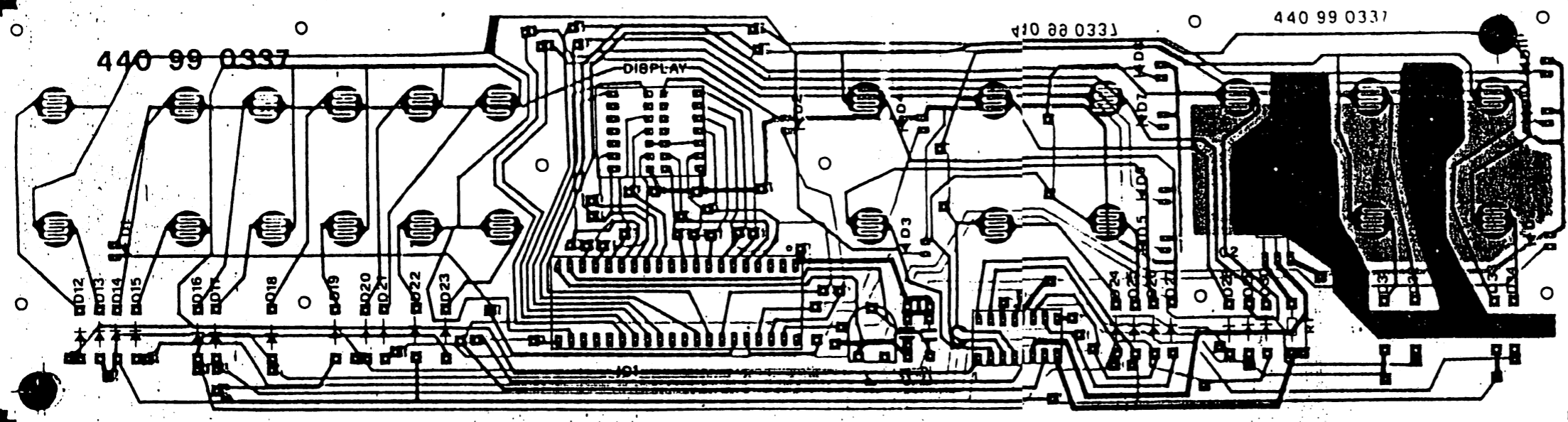
CONTROLS BOARD

P.C. 440 99 0338
ASSY590 05 0076



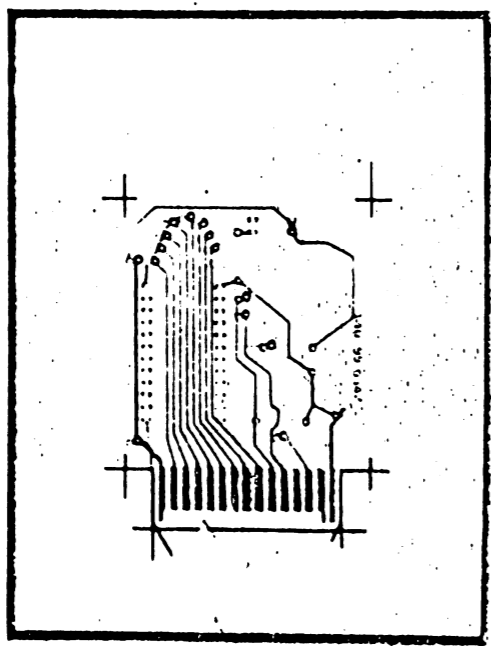
SIEL





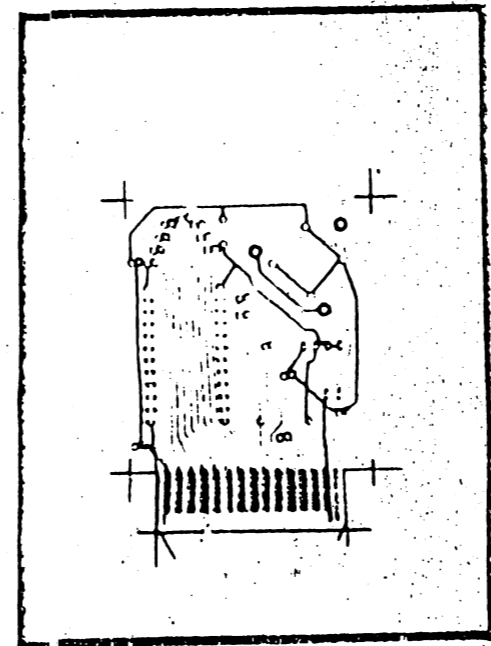
ROM PACK

P.C. 440 99 0342
ASSY 590 06 0071



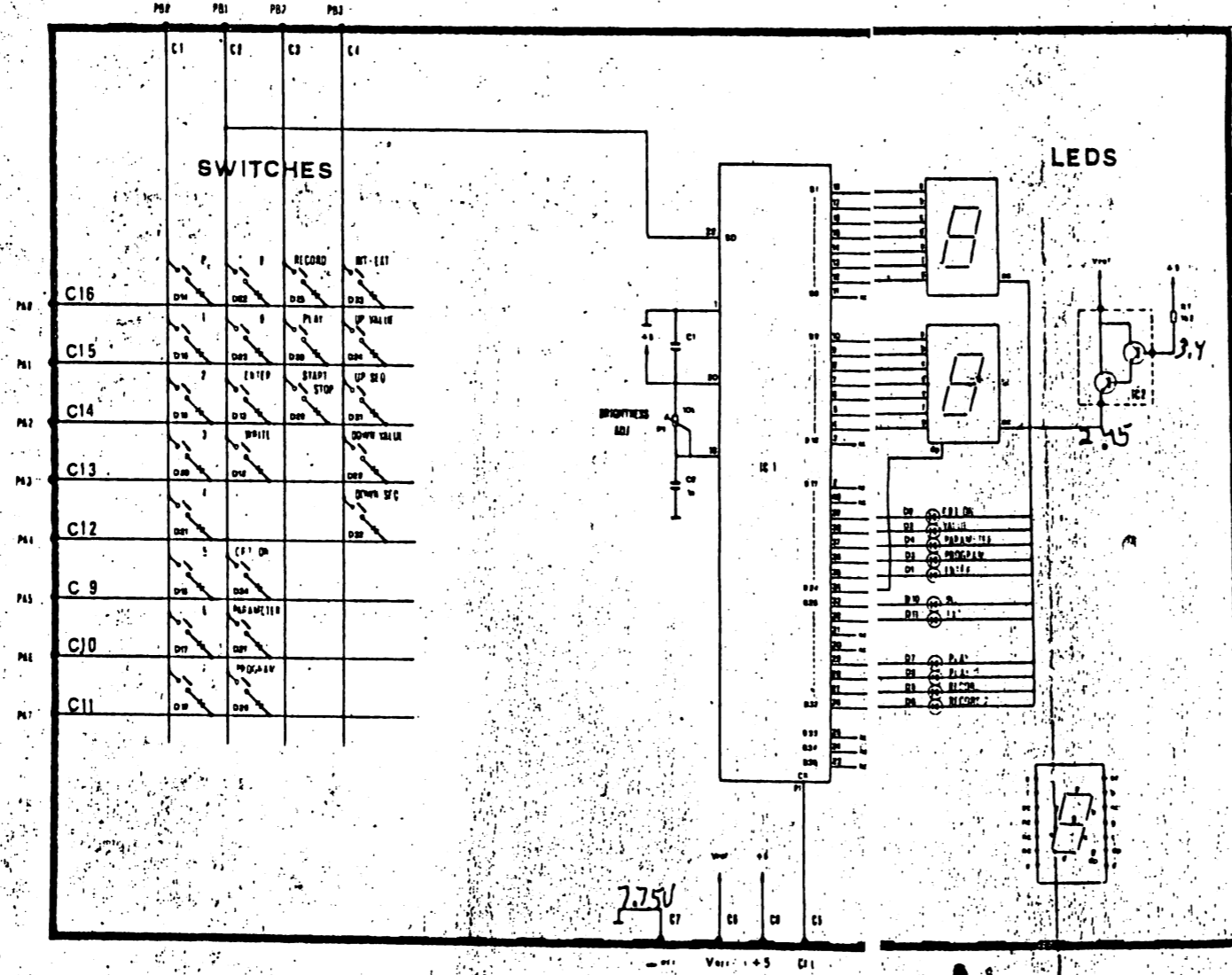
RAM PACK

P.C. 440 99 0340
ASSY 590 06 0085

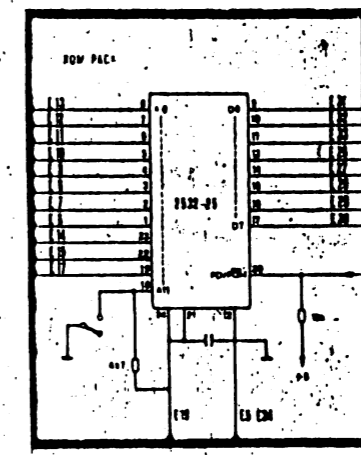


Reader
00

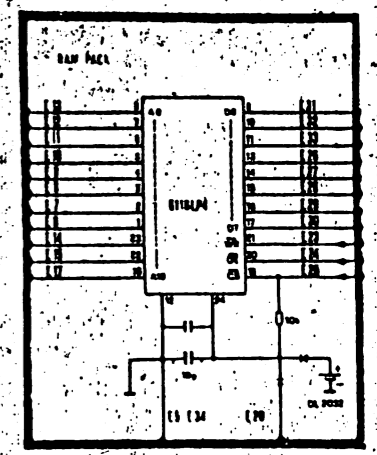
DISPLAY & SWITCHES BOARD



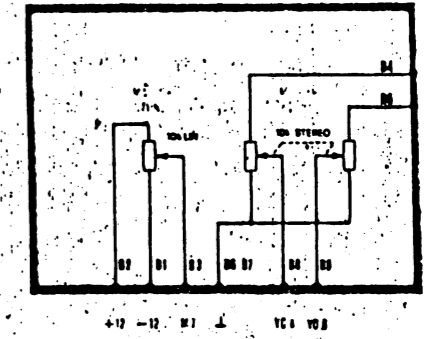
ROM PACK



RAM PACK

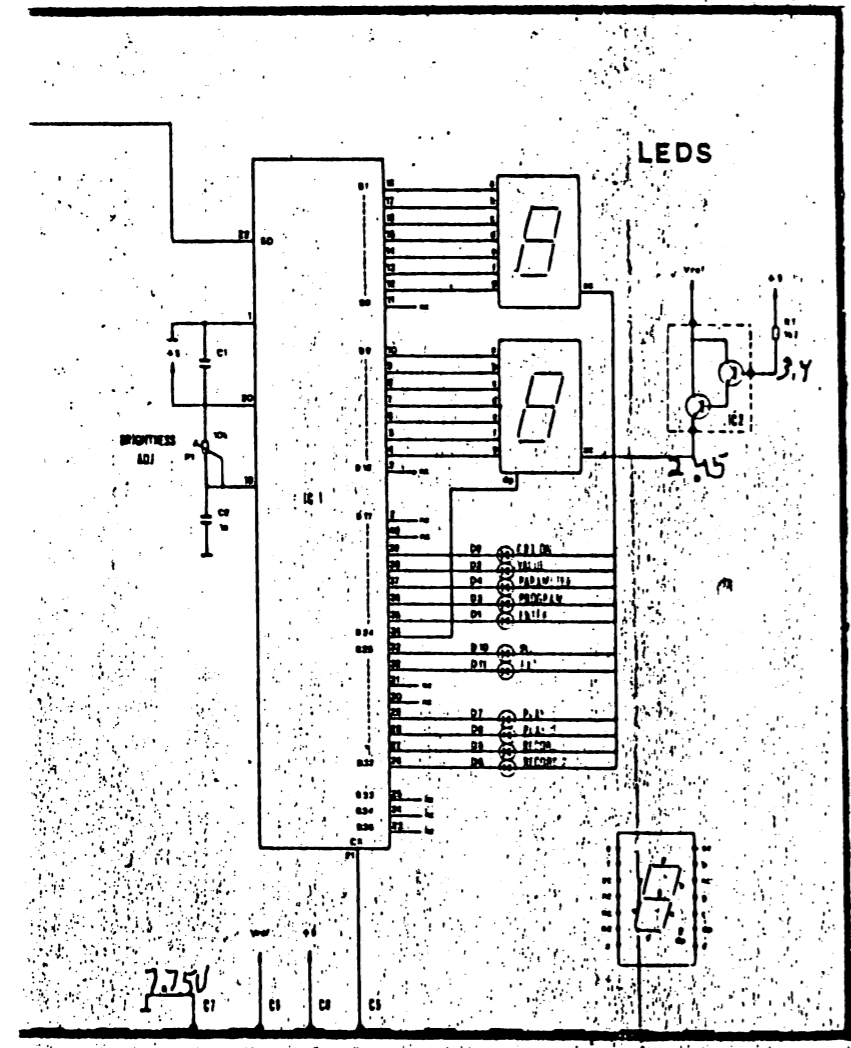


CONTROLS BOARD

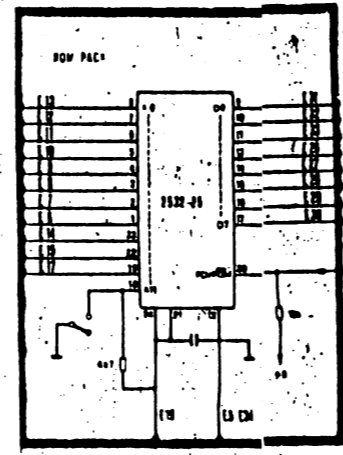


Readout
00

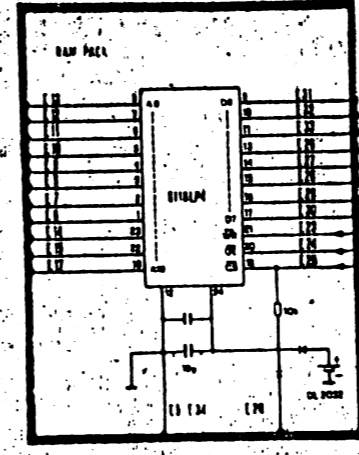
S BOARD



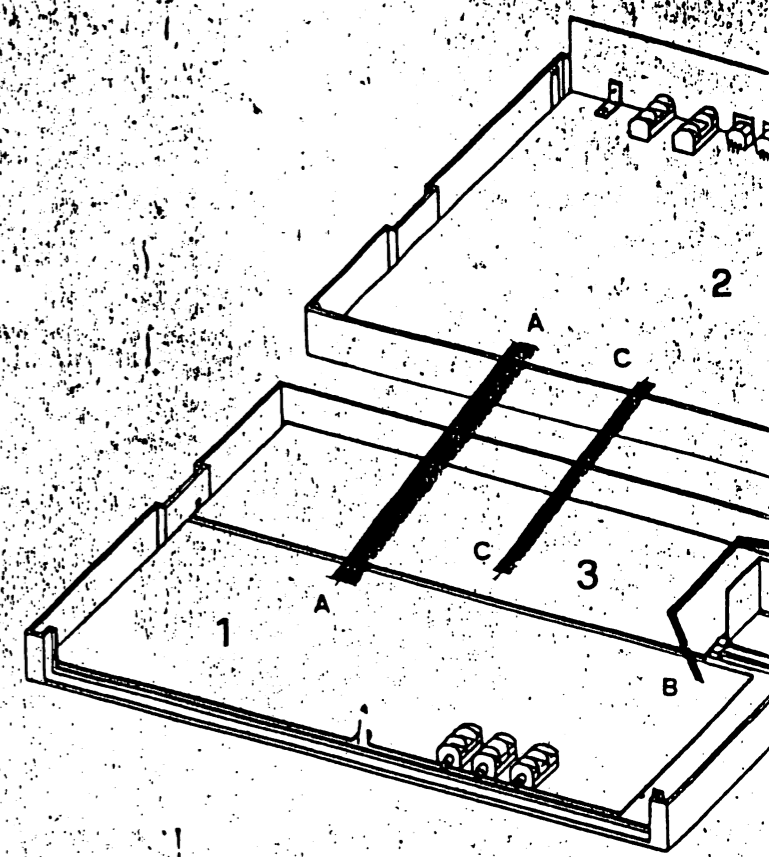
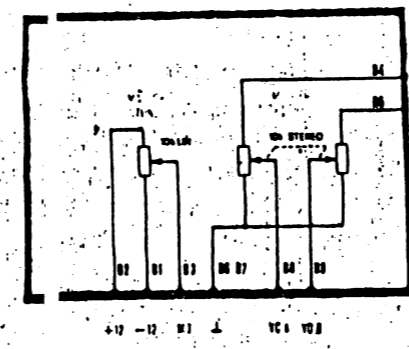
ROM PACK



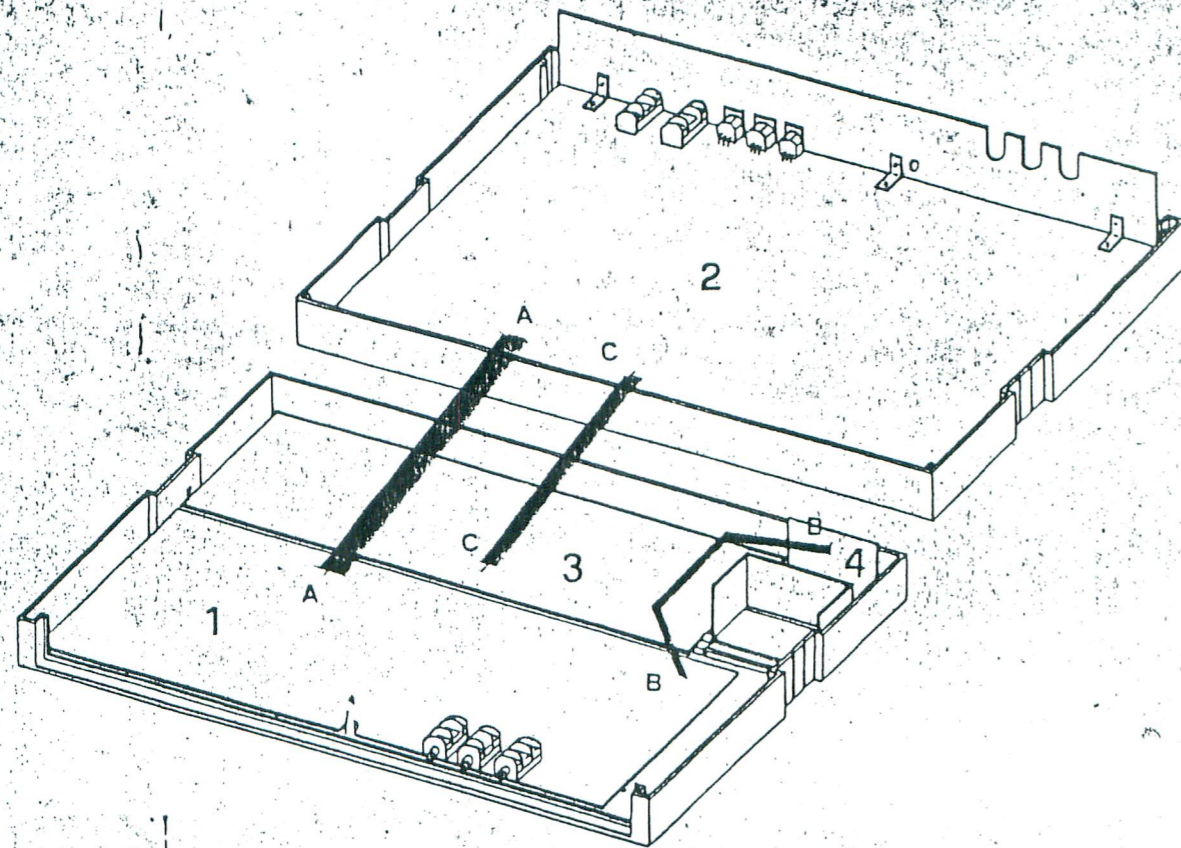
RAM PACK



CONTROLS BOARD



- 1. GENERATION BOARD
- 2. CPU BOARD
- 3. DISPLAY & SWITCHES BOARD
- 4. CONTROLS BOARD



- | | |
|-----------------------------|-------------|
| 1. GENERATION BOARD | 440 99 4026 |
| 2. CPU BOARD | 440 99 4025 |
| 3. DISPLAY & SWITCHES BOARD | 440 99 0337 |
| 4. CONTROLS BOARD | 440 99 0358 |

P.C. 440.99.4025
CPU BOARD

- I.C.1 - 74HC32
- I.C.2 - 68B50
- I.C.3 - 6N138
- I.C.4 - 74LS04
- I.C.5 - 74HC00
- I.C.6 - 74HC14
- I.C.7 - LM 317 T
- I.C.8 - LM 317 T
- I.C.9 - LM 337
- I.C.10 - 2564-35
- I.C.11 - 6116 LP4
- I.C.12 - 74HC373
- I.C.13 - 74HC245
- I.C.14 - TMS 7000
- I.C.15 - 74HC138
- I.C.16 - 74HC377
- I.C.17 - 74HC377
- I.C.18 - DAC 0832
- I.C.19 - TL 084
- I.C.20 - 4016

P.C. 440.99.4026
GENERATION BOARD

- I.C.1 - 4051
- I.C.2 - 4051
- I.C.3 - TL 084
- I.C.4 - TL 084
- I.C.5 - TL 084
- I.C.6 - TL 084
- I.C.7 - M 112 B1
- I.C.8 - SSM 2031
- I.C.9 - TL 082
- I.C.10 - MM 5437
- I.C.11 - TL 082
- I.C.12 - LM 393
- I.C.13 - TL 082
- I.C.14 - TL 082
- I.C.15 - TL 082
- I.C.16 - TL 082
- I.C.17 - TL 082
- I.C.18 - 4016
- I.C.19 - 4070
- I.C.20 - SSM 2045
- I.C.21 - TDA 1022
- I.C.22 - 4016

P.C. 440.99.0337
DISPLAY & SWITCHES BOARD

- I.C.1 - M5451
- I.C.2 - BDX 33
- Display man 4810 A

P.C. 440.99.0340
RAM PACK

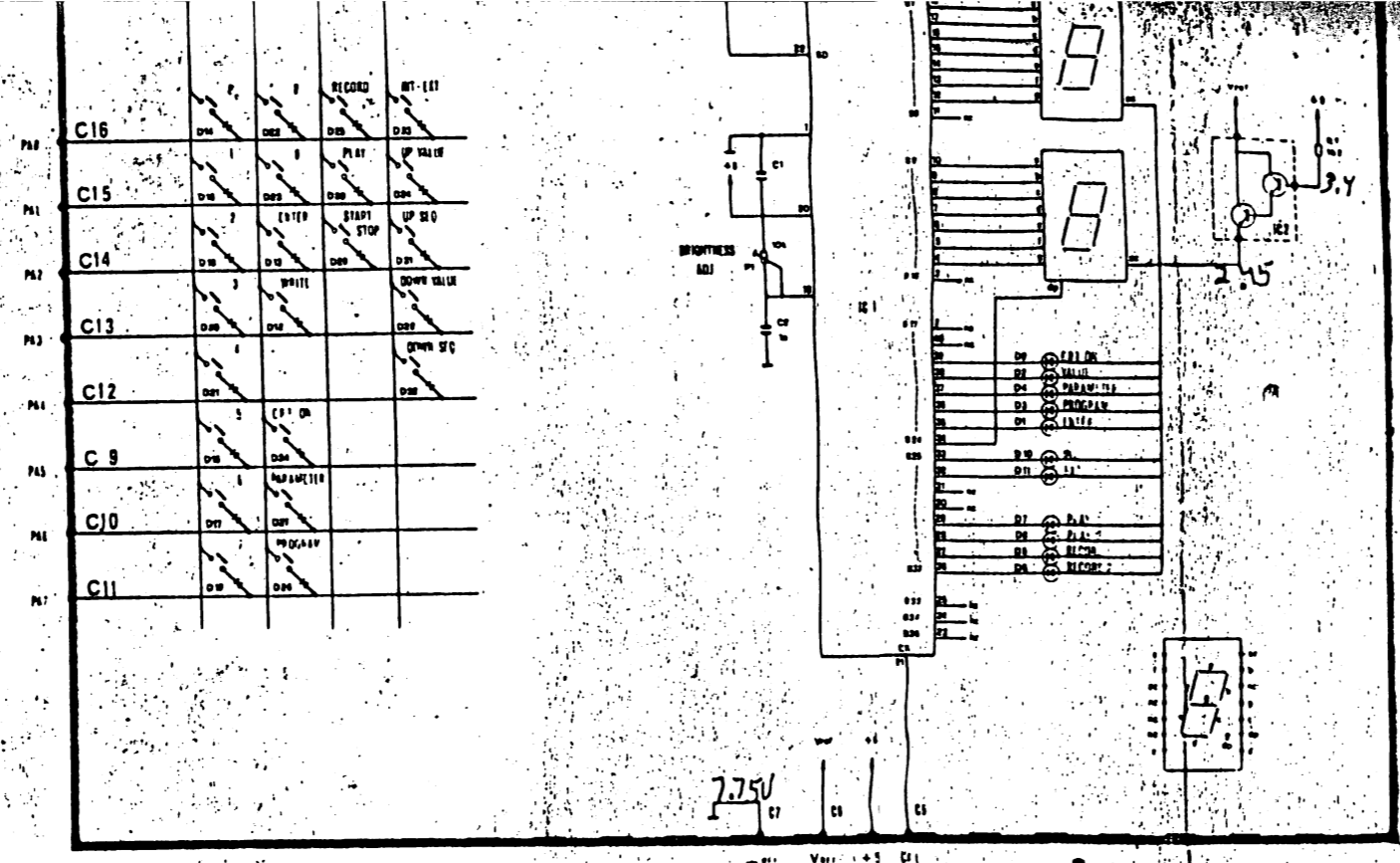
6116 LP4

P.C. 440.99.0342
ROM PACK

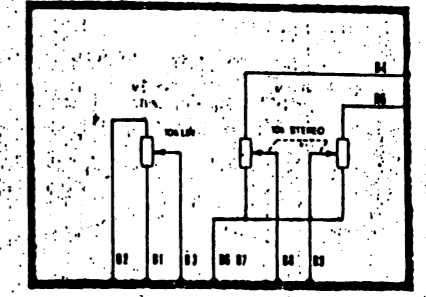
2532-25

NOTES:

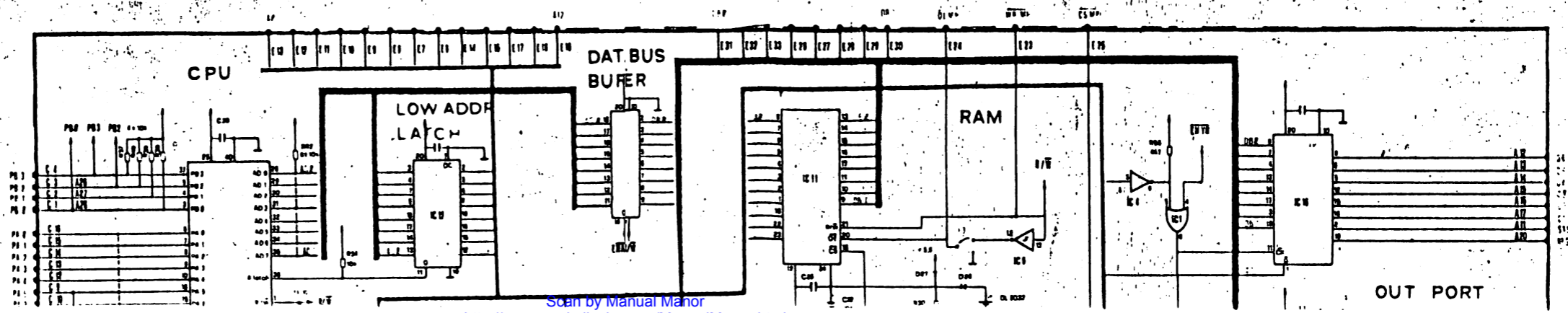
- All condensers without value specification are 47 n ceramic condensers.
- All resistors are 1/4 W.
- All resistors whose symbol is marked by an oblique stroke are 1% precision resistors.
- Upward arrows on CPU BOARD indicate a +5 voltage.
- Upward arrows on GENERATION BOARD indicate a +12 voltage.
- UNLESS OTHERWISE INDICATED

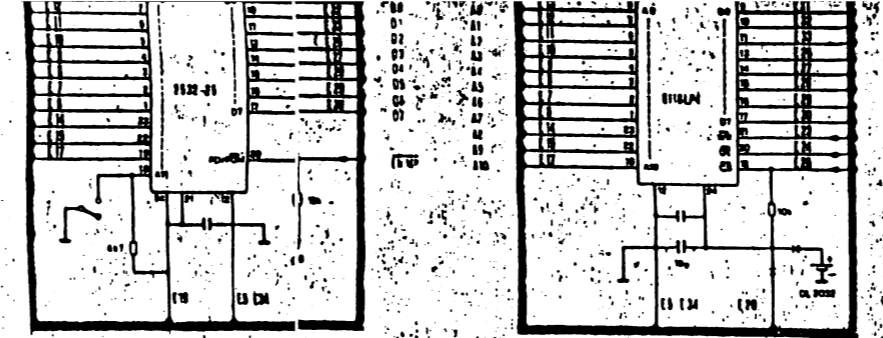
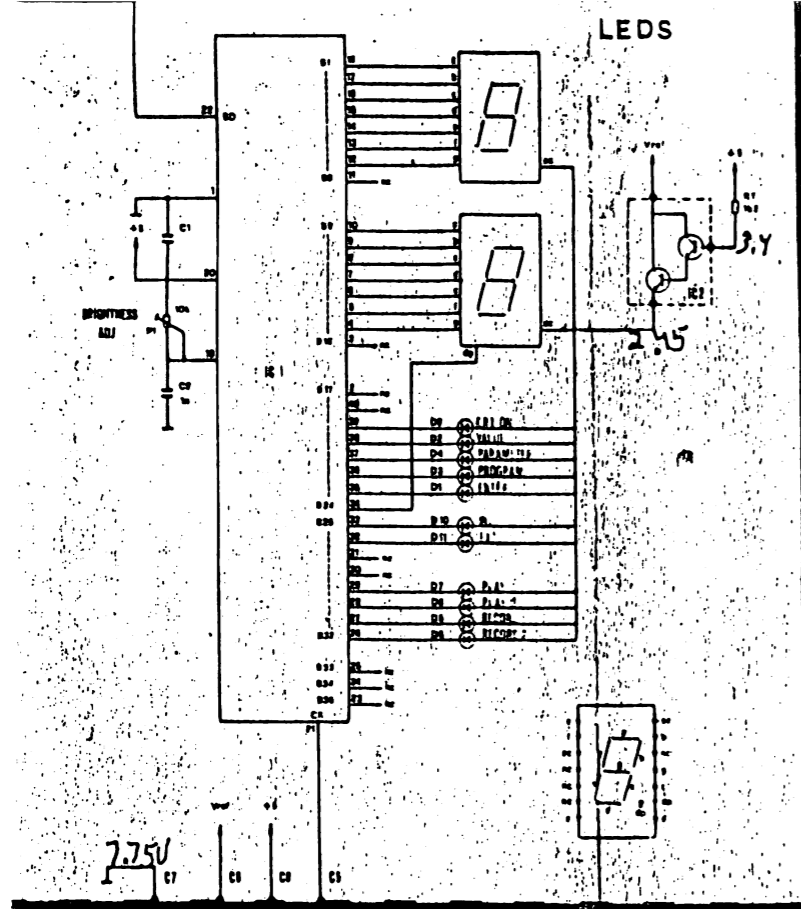


CONTROLS BOARD

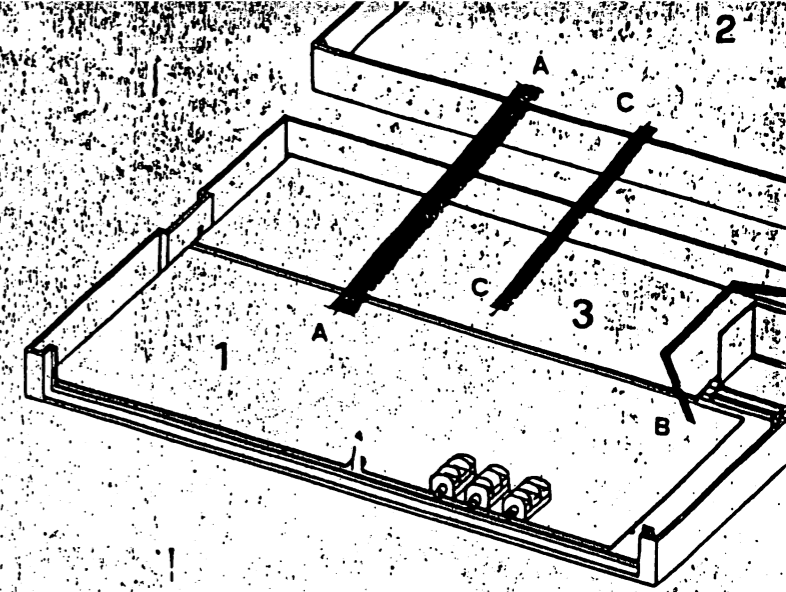
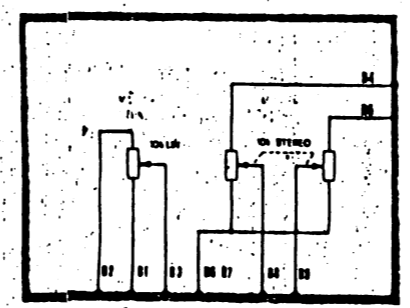


CPU BOARD



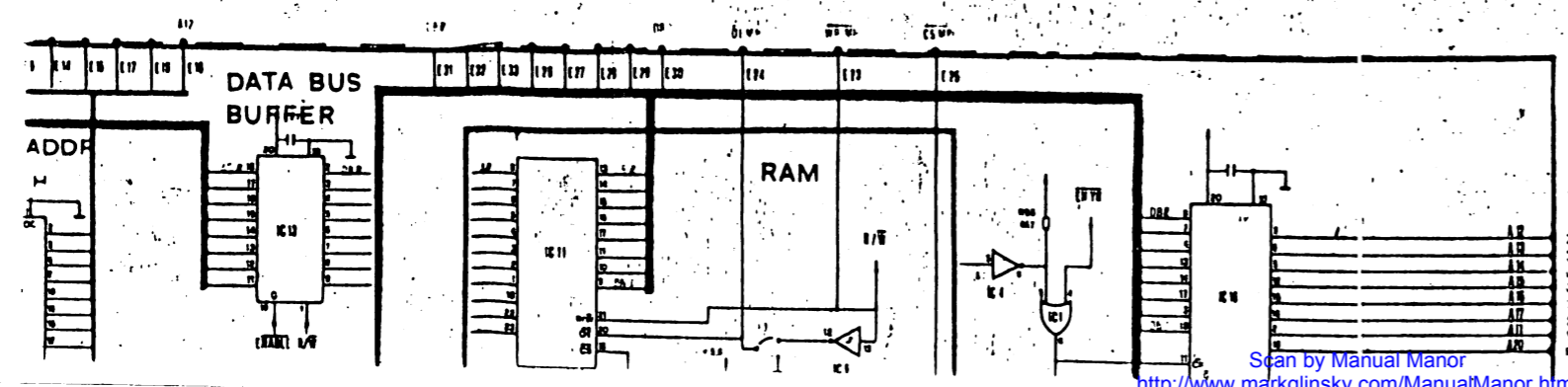


CONTROLS BOARD

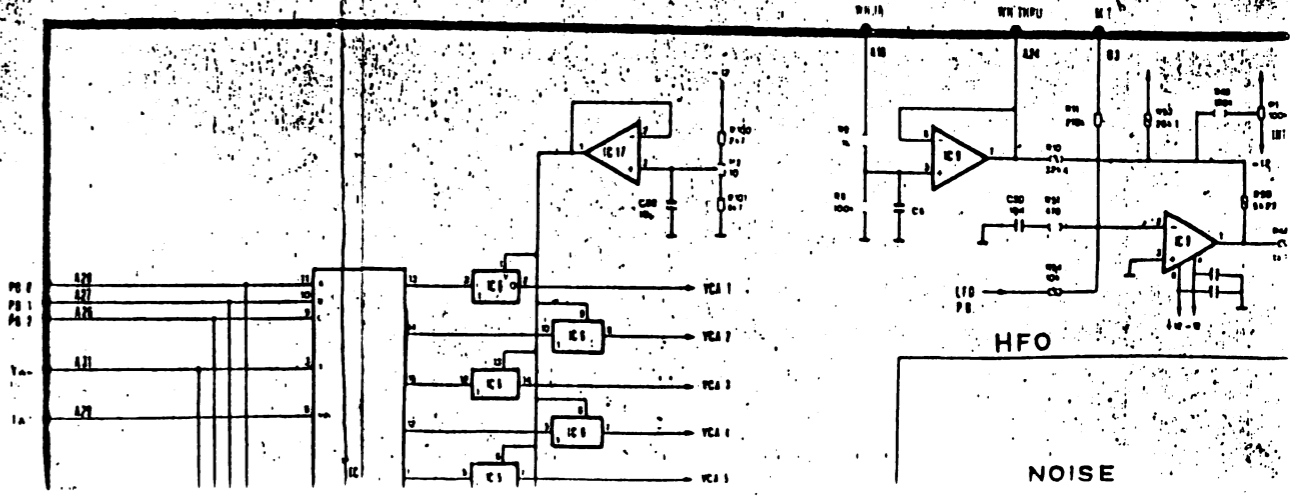


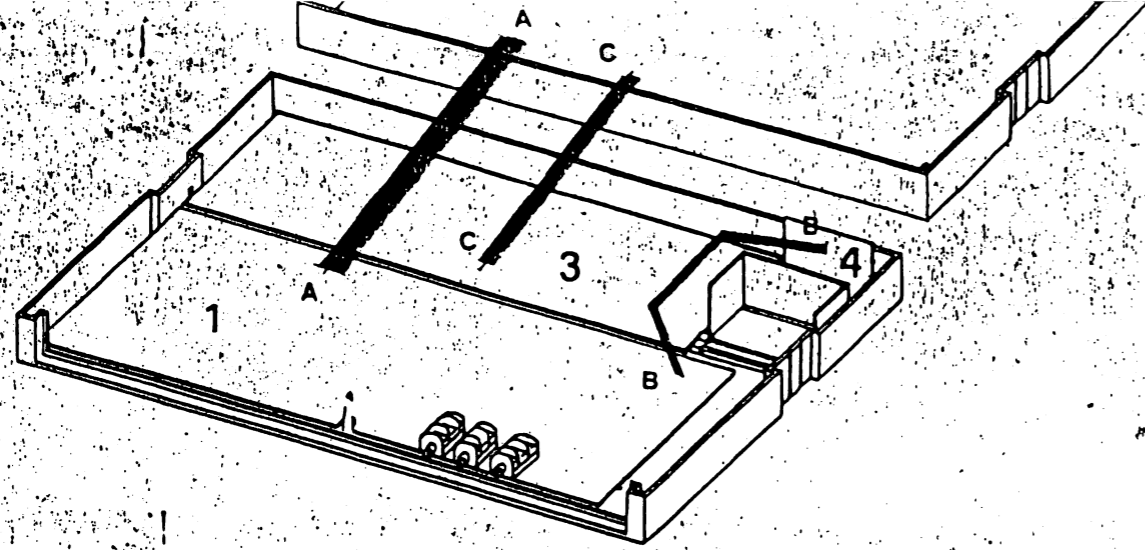
1. GENERATION BOARD
2. CPU BOARD
3. DISPLAY & SWITCHES BOARD
4. CONTROLS BOARD

CPU BOARD



GENERATION BOARD





- | | |
|-----------------------------|-------------|
| 1. GENERATION BOARD | 440 99 4026 |
| 2. CPU BOARD | 440 99 4025 |
| 3. DISPLAY & SWITCHES BOARD | 440 99 0337 |
| 4. CONTROLS BOARD | 440 99 0358 |

- | | |
|-------------------|-------------------|
| I.C. 7- LM 337 | I.C. 9- TL 082 |
| I.C. 10- 2564-35 | I.C. 10- MM 5437 |
| I.C. 11- 6116 LP4 | I.C. 11- TL 082 |
| I.C. 12- 74HC373 | I.C. 12- LM 393 |
| I.C. 13- 74HC245 | I.C. 13- TL 082 |
| I.C. 14- TMS 7000 | I.C. 14- TL 082 |
| I.C. 15- 74HC138 | I.C. 15- TL 082 |
| I.C. 16- 74HC377 | I.C. 16- TL 082 |
| I.C. 17- 74HC377 | I.C. 17- TL 082 |
| I.C. 18- DAC 0832 | I.C. 18- 4016 |
| I.C. 19- TL 084 | I.C. 19- 4070 |
| I.C. 20- 4016 | I.C. 20- SSM 2045 |
| | I.C. 21- TDA 1022 |
| | I.C. 22- 4016 |

P.C. 440.99.0337
DISPLAY & SWITCHES BOARD

- I.C. 1 - M5451
I.C. 2 - BDX 33
Display man 4B10 A

P.C. 440.99.0340
RAM PACK

6116 LP4

P.C. 440.99.0342
ROM PACK

2532-25

NOTES:

- All condensers without value specification are 47 n ceramic condensers.
 - All resistors are 1/4 W.
 - All resistors whose symbol is marked by an oblique stroke are 1X precision resistors.
 - Upward arrows on CPU BOARD indicate a +5 voltage.
 - Upward arrows on GENERATION BOARD indicate a +12 voltage.
- UNLESS OTHERWISE INDICATED

ON BOARD

